

AERODROME  
CHART - ICAO

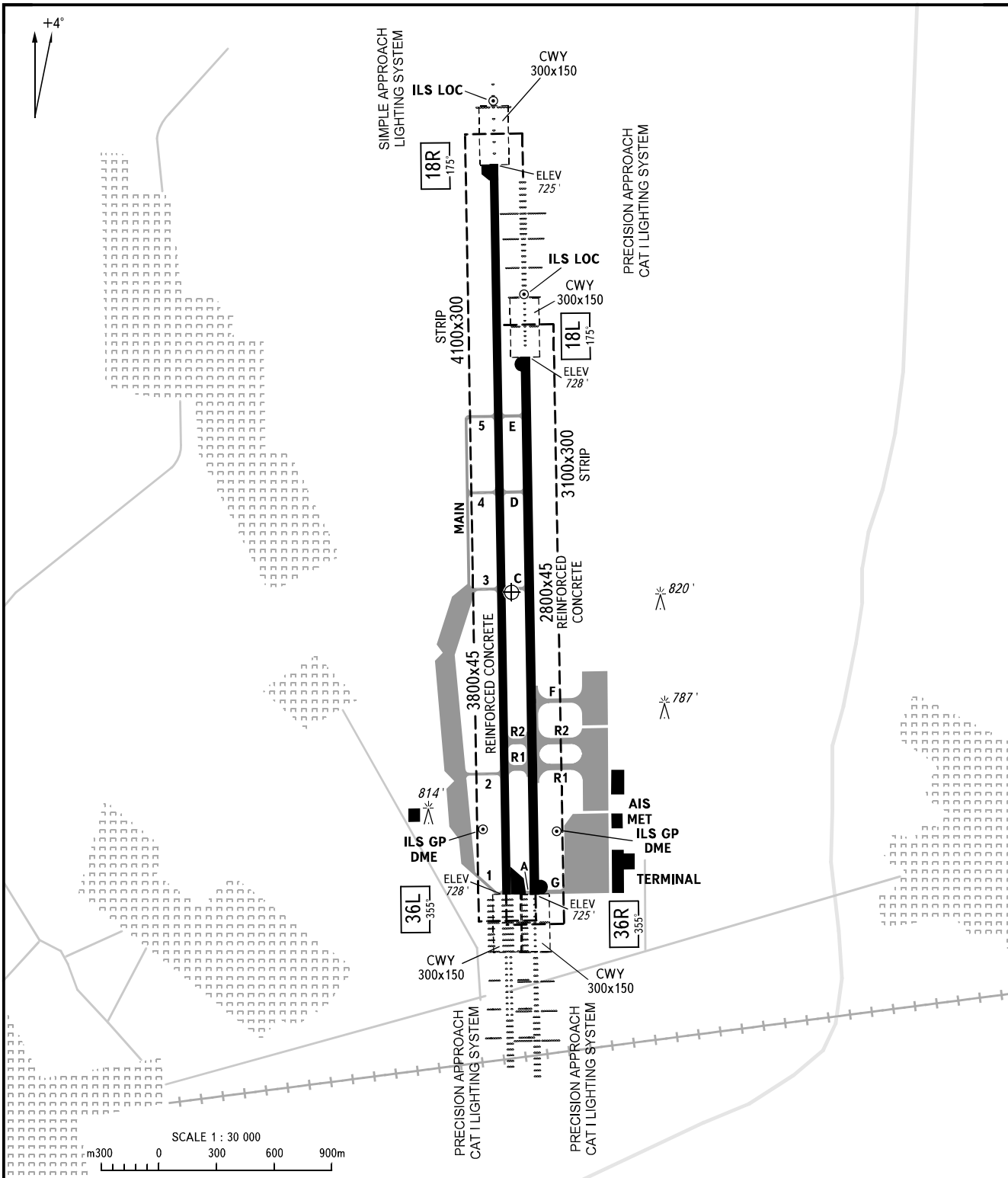
ARP  
N37°37'18"  
E061°53'48"

ELEV  
728'

TOWER 122.200

MARY, TURKMENISTAN

MARY

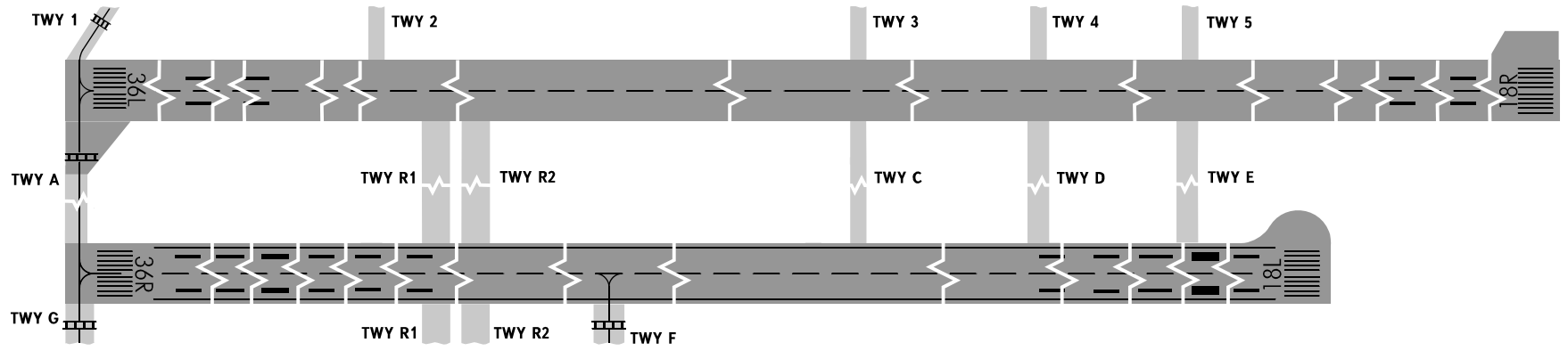


AERODROME LIGHTING	RWY	DIRECTION (TRUE)	THR	BEARING STRENGTH
Approach: RWY 18L/36R - HIALS RWY 18R - LIL RWY 36L - HIALS	18L	178°40'	N37°37'58" E061°53'50"	PCN 40 /R/A/X/T
Runway: Edge - white, last 600m - yellow	36R	358°40'	N37°36'28" E061°53'53"	
Threshold: Green	18R	178°40'	N37°38'30" E061°53'43"	PCN 80 /R/A/W/T
	36L	358°40'	N37°36'27" E061°53'47"	

ELEVATIONS IN FEET  
DIMENSIONS IN METRES  
BEARINGS ARE MAGNETIC

CHANGE: THR

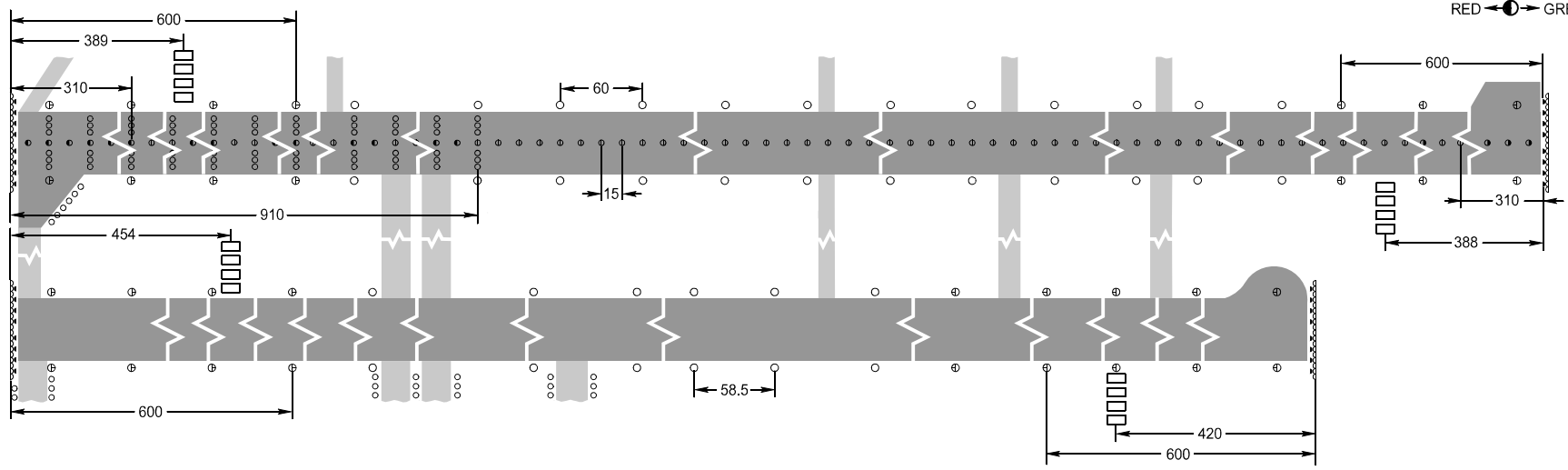
MARKING AIDS RWY 18R / 36L, 18L / 36R AND EXIT TWY



LIGHTING AIDS RWY 18R / 36L, 18L / 36R AND EXIT TWY

GREEN ● RED

RED ● GREEN



SCALE 1 : 5 000  
m 50 0 50 100 150m

DIMENSIONS IN METRES

CHANGE: NIL