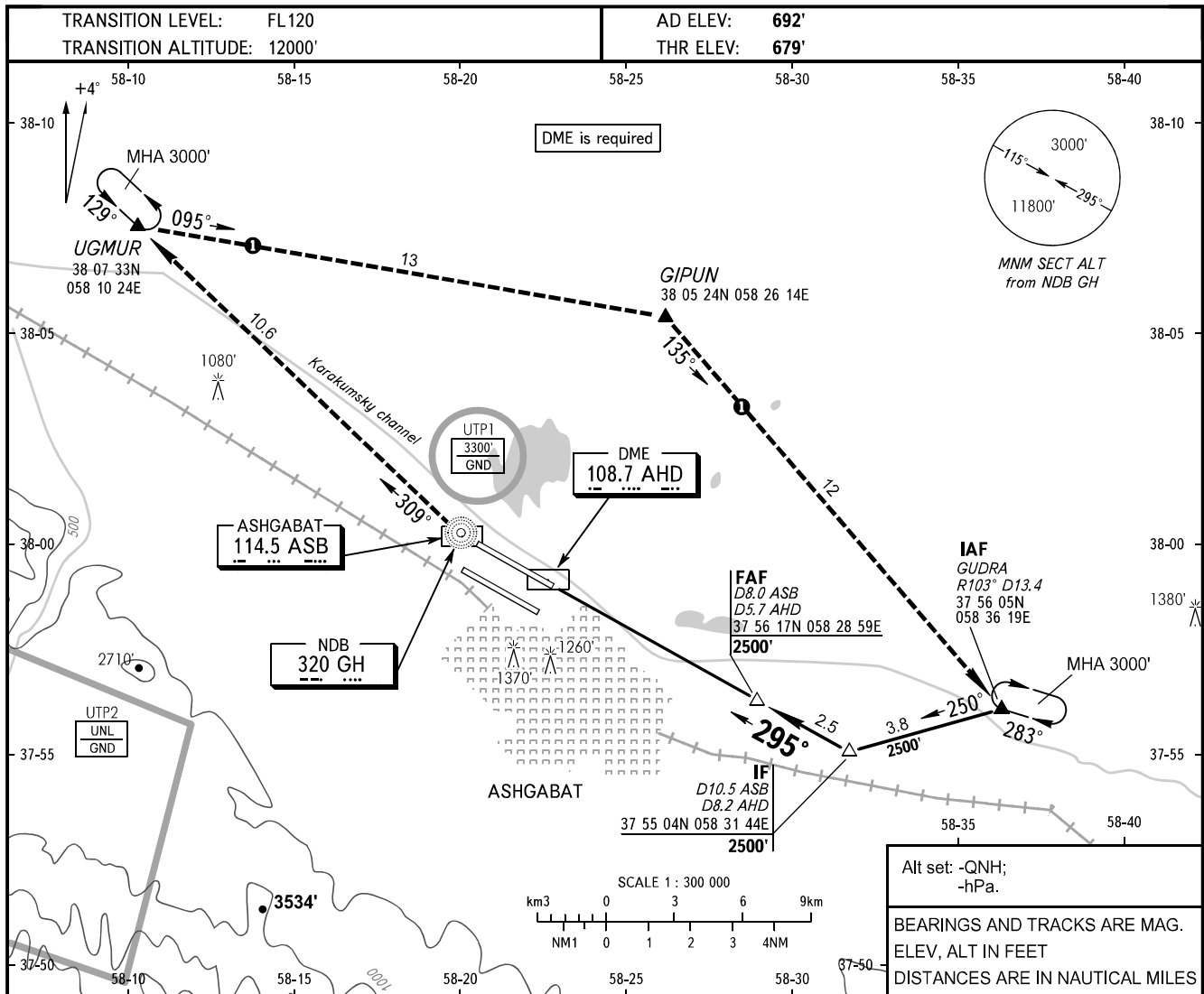


**INSTRUMENT  
APPROACH  
CHART - ICAO**

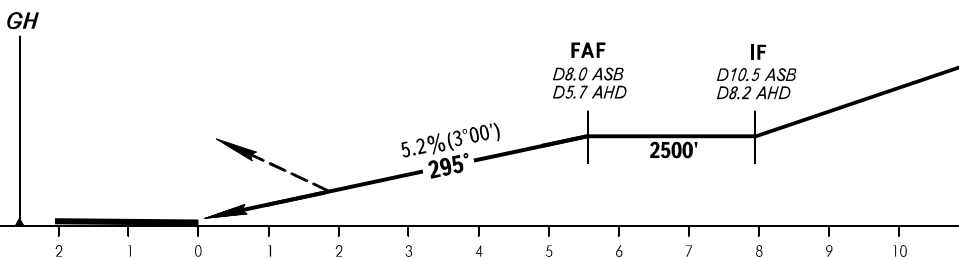
APPROACH	123.500
RADAR	118.700
TOWER	118.100

**ASHGABAT, TURKMENISTAN**  
ASHGABAT  
NDB RWY 30R



**MISSED APPROACH**

Climb on track 295° to NDB GH,  
turn RIGHT to CRP UGMUR  
climbing to 3000' to holding area  
or by ATC instruction.



Alt set: -QNH;  
-hPa.  
BEARINGS AND TRACKS ARE MAG.  
ELEV, ALT IN FEET  
DISTANCES ARE IN NAUTICAL MILES

**MISSED APPROACH IN CASE OF RADIO COMMUNICATION FAILURE:**  
1. Set SSR transponder to code 7600.  
2. Climb on track 295° to NDB GH, turn RIGHT to CRP UGMUR climbing to 3000', then proceed to CRP GIPUN, then to holding area over CRP GUDRA, hold for 3min, then proceed according to the chart.

OCA(H)		A	B	C	D						
Straight-in Approach		1276' (597')	1276' (597')	1276' (597')	1276' (597')						
GROUND SPEED	KT	70	90	100	120	140	160				
RATE OF DESCENT	ft/min	372	478	531	637	743	849				

CHANGE: Supplementary navaid