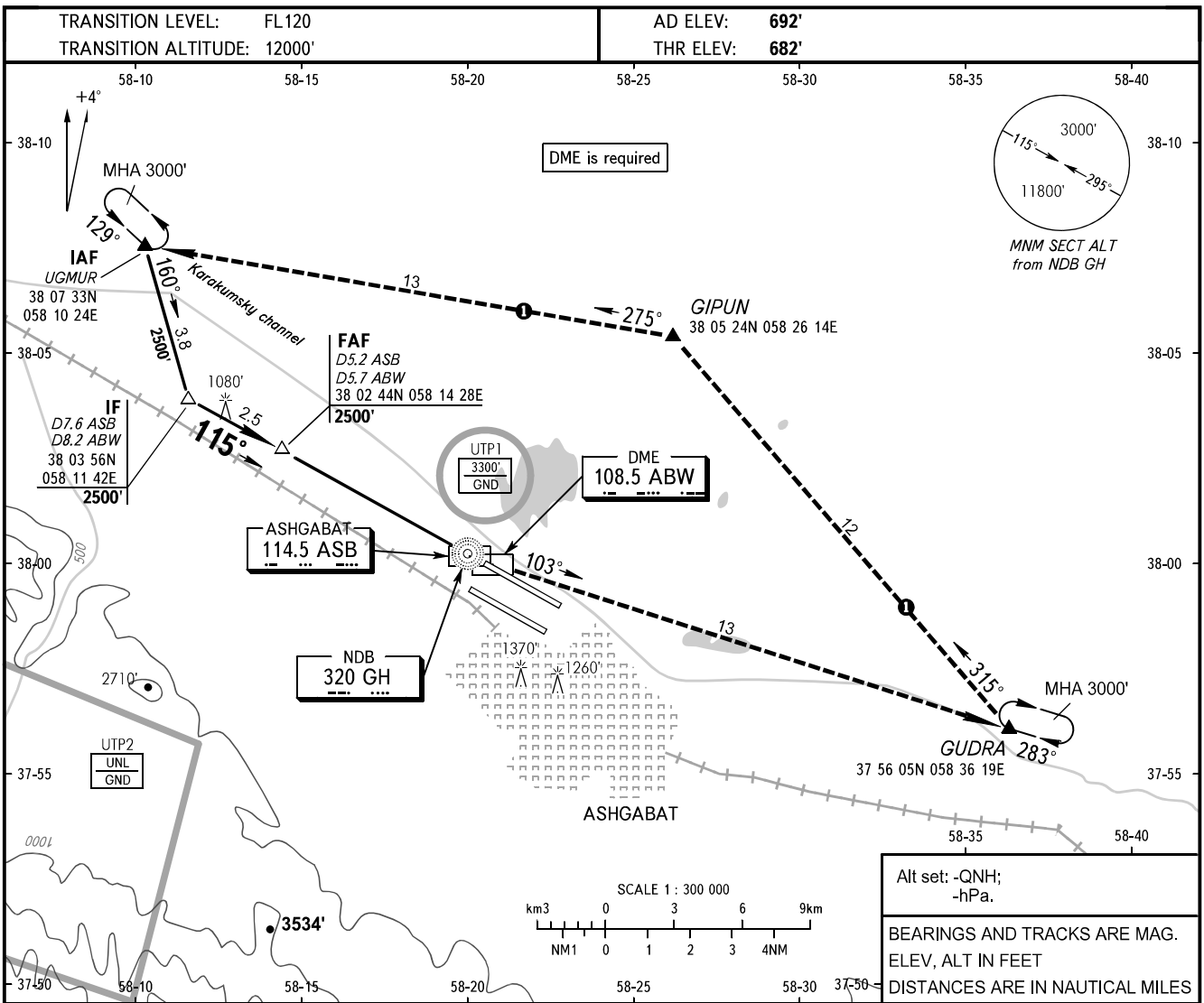


**INSTRUMENT  
APPROACH  
CHART - ICAO**

APPROACH	<b>123.500</b>
RADAR	<b>118.700</b>
TOWER	<b>118.100</b>

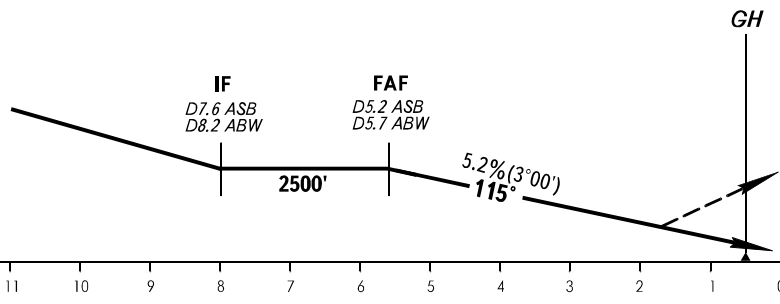
**ASHGABAT, TURKMENISTAN**  
ASHGABAT  
NDB RWY 12L



Alt set: -QNH;  
-hPa.

BEARINGS AND TRACKS ARE MAG.  
ELEV, ALT IN FEET  
DISTANCES ARE IN NAUTICAL MILES

**MISSED APPROACH**  
Climb on track 115° to NDB GH,  
turn LEFT to CRP GUDRA  
climbing to 3000' to holding  
area or by ATC instruction.



OCA(H)		A	B	C	D					
Straight-in Approach		1220' (538')	1220' (538')	1220' (538')	1220' (538')					
GROUND SPEED		KT	70	90	100	120	140	160		
RATE OF DESCENT		ft/min	372	478	531	637	743	849		

**1 MISSED APPROACH IN CASE OF RADIO COMMUNICATION FAILURE:**

- Set SSR transponder to code 7600.
- Climb on track 115° to NDB GH, turn LEFT to CRP GUDRA climbing to 3000', then proceed to CRP GUDRA, then to holding area over CRP UGMUR, hold for 3min, then proceed according to the chart.

CHANGE: Supplementary navaid