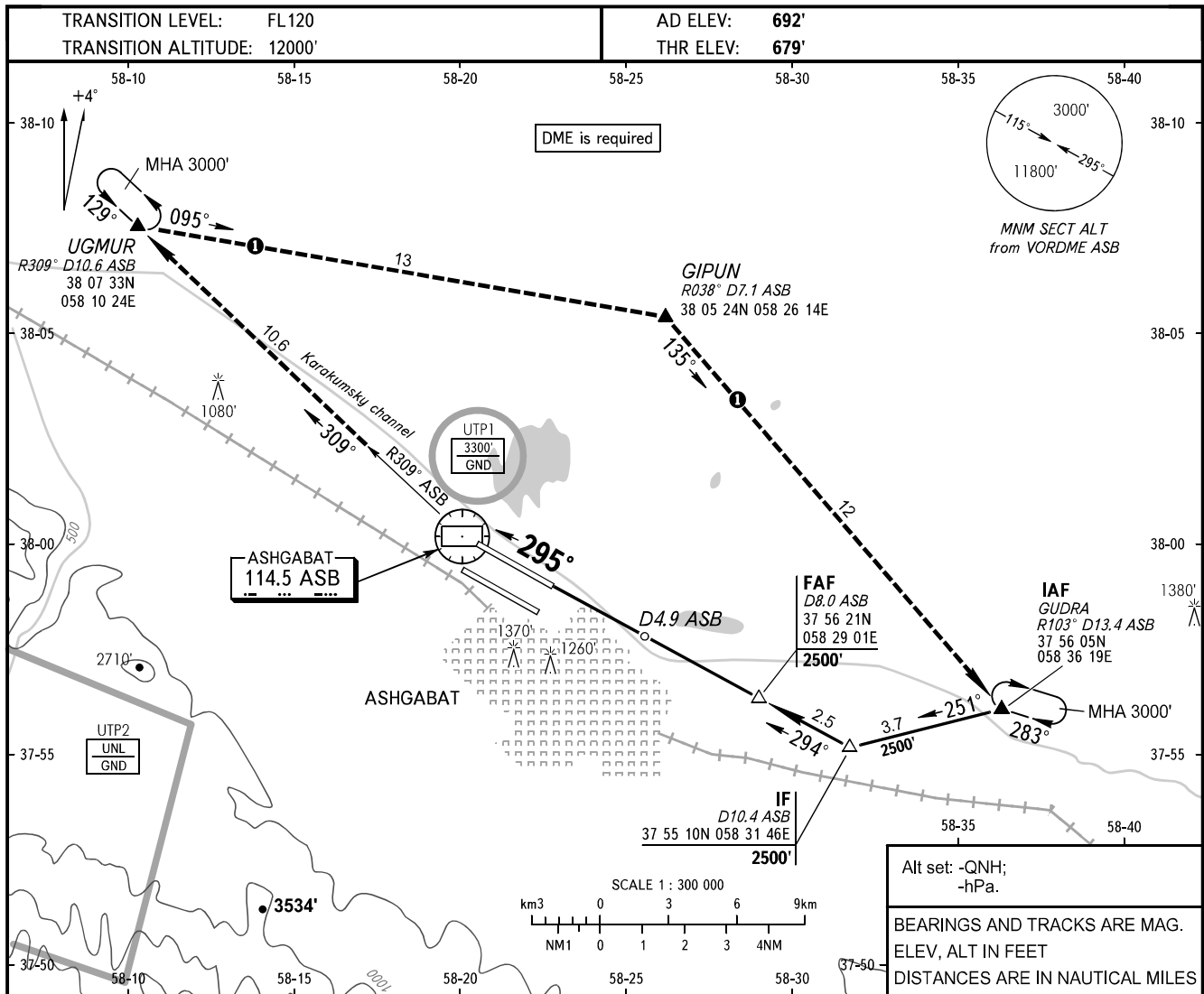


**INSTRUMENT
APPROACH
CHART - ICAO**

APPROACH	123.500
RADAR	118.700
TOWER	118.100

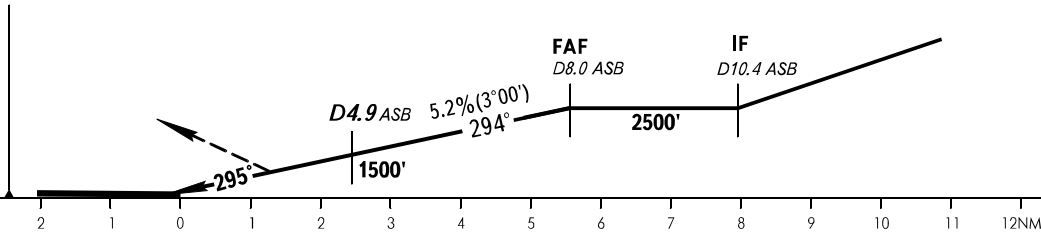
**ASHGABAT, TURKMENISTAN
ASHGABAT
VOR RWY 30R**



MISSED APPROACH

Climb on track 294° to VOR ASB, turn RIGHT to intercept R309° ASB to CRP UGMUR climbing to 3000' to holding area or by ATC instruction.

VORDME ASB



OCA(H)		A	B	C	D				
Straight-in	1085' (406')	1085' (406')	1085' (406')	1085' (406')	1085' (406')				
Approach									
GROUND SPEED	KT	70	90	100	120	140	160		
RATE OF DESCENT	ft/min	372	478	531	637	743	849		

WARNING

Final approach track is displaced by 1° from RCL.
⚠ MISSED APPROACH IN CASE OF RADIO COMMUNICATION FAILURE:
 1. Set SSR transponder to code 7600.
 2. Climb on track 294° to VOR ASB, turn RIGHT to intercept R309° ASB to CRP UGMUR climbing to 3000', then proceed to CRP GIPUN, then to holding area over CRP GUDRA, hold for 3min, then proceed according to the chart.