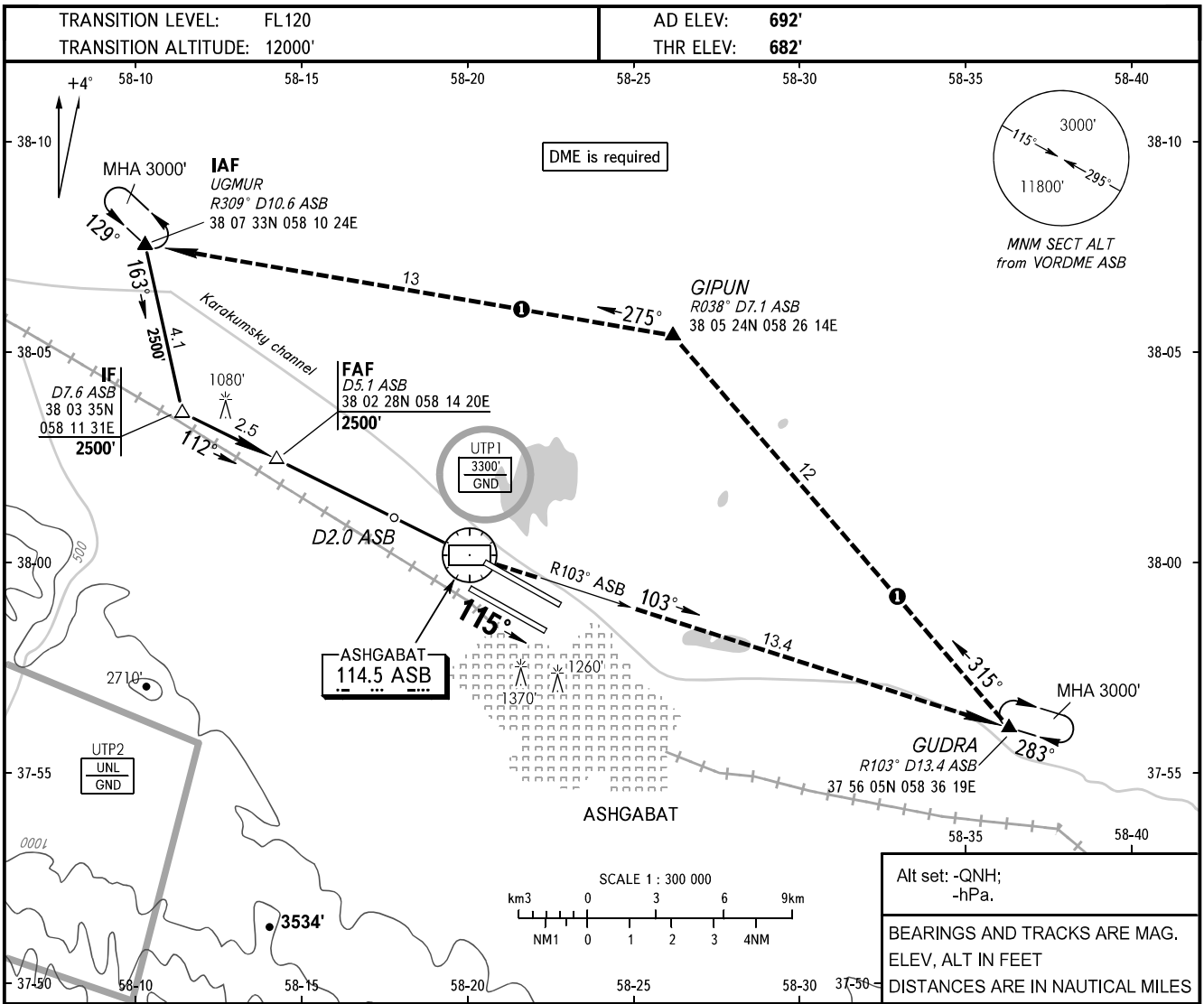


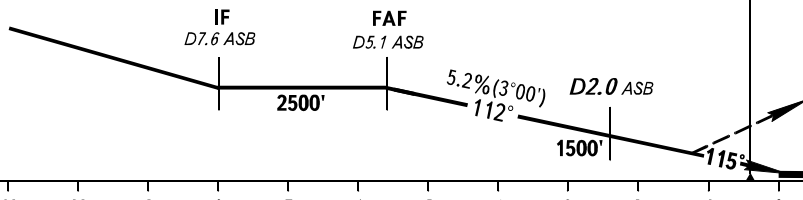
**INSTRUMENT
APPROACH
CHART - ICAO**

APPROACH	123.500
RADAR	118.700
TOWER	118.100

ASHGABAT, TURKMENISTAN
ASHGABAT
VOR RWY 12L



MISSED APPROACH
Climb on track 112° to VOR ASB, turn LEFT to intercept R103° ASB to CRP GUDRA climbing to 3000' to holding area or by ATC instruction.



OCA(H)	A	B	C	D						
Straight-in	1082' (400')	1082' (400')	1082' (400')	1082' (400')						
Approach										
GROUND SPEED	KT	70	90	100	120	140	160			
RATE OF DESCENT	ft/min	372	478	531	637	743	849			

WARNING
Final approach track is displaced by 3° from RCL.

MISSED APPROACH IN CASE OF RADIO COMMUNICATION FAILURE:

1. Set SSR transponder to code 7600.
2. Climb on track 112° to VOR ASB, turn LEFT to intercept R103° ASB to CRP GUDRA climbing to 3000', then proceed to CRP GIPUN, then to holding area over CRP UGMUR, hold for 3min, then proceed according to the chart.

CHANGE: Radio navigational aid