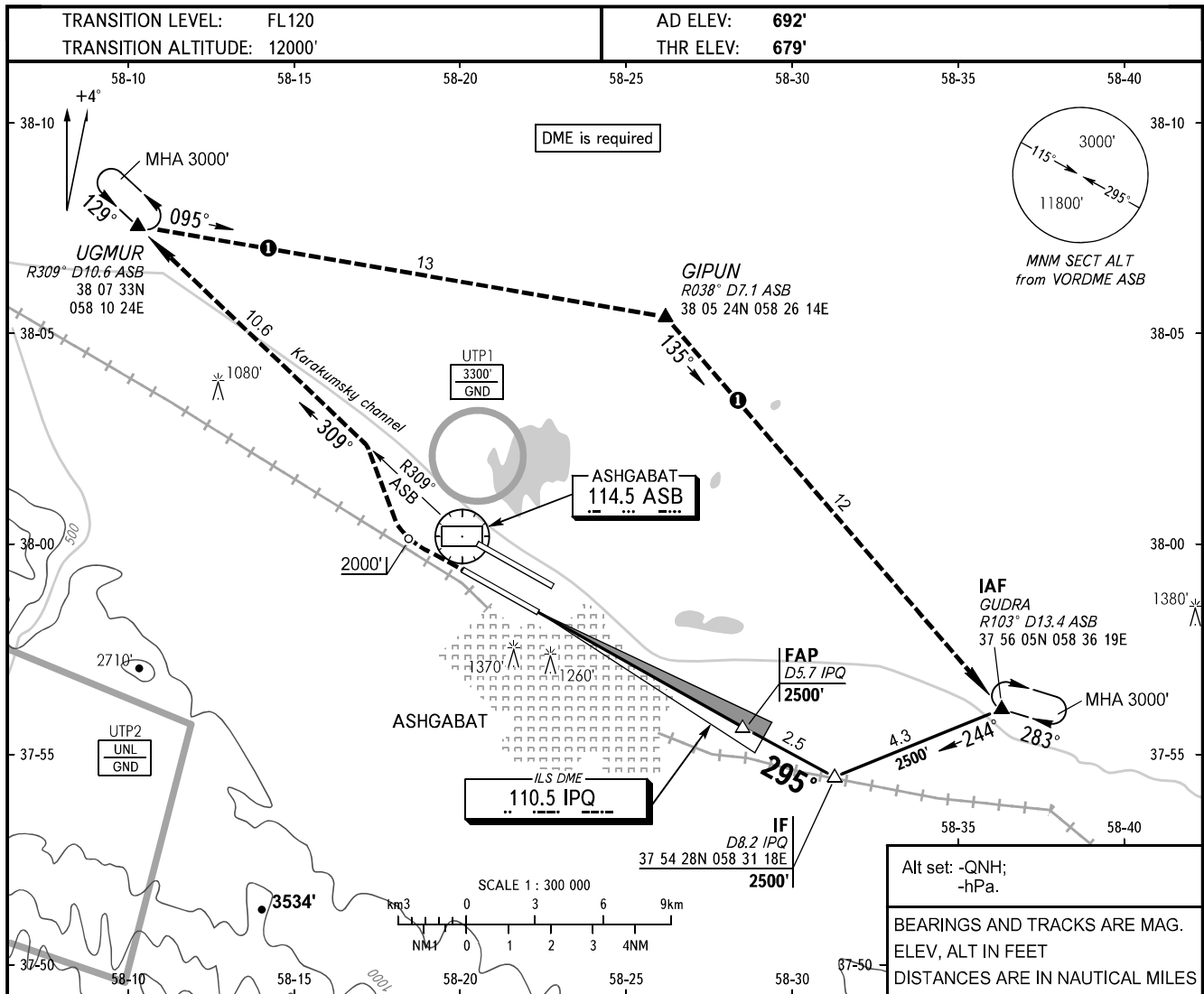


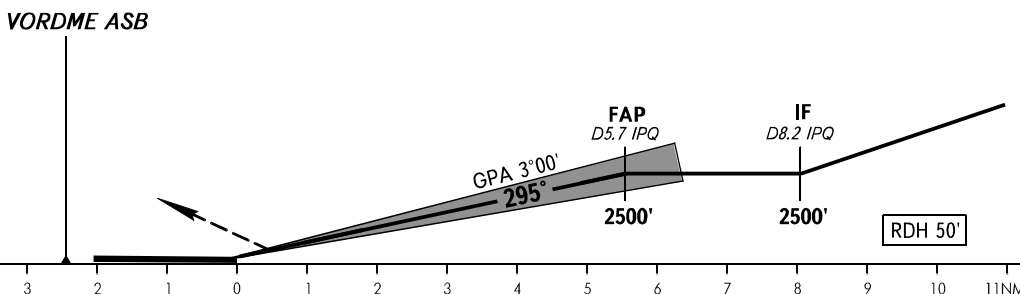
**INSTRUMENT  
APPROACH  
CHART - ICAO**

APPROACH	123.500
RADAR	118.700
TOWER	118.100

**ASHGABAT, TURKMENISTAN**  
ASHGABAT  
ILS RWY 30L CAT I/II/III



**MISSED APPROACH**  
Climb on track 295° to 2000', turn RIGHT to intercept R309° ASB to CRP UGMUR climbing to 3000' to holding area or by ATC instruction.



OCA(H)		A	B	C	D		
Straight-in Approach	CAT I	811' (132')	820' (141')	830' (151')	840' (161')		
	CAT II	722' (43')	738' (59')	751' (72')	764' (85')		
	CAT IIIA	APPROVED					
GROUND SPEED	KT	70	90	100	120	140	160
RATE OF DESCENT	ft/min	372	478	531	637	743	849

**MISSED APPROACH IN CASE OF RADIO COMMUNICATION FAILURE:**

- Set SSR transponder to code 7600.
- Climb on track 295° to 2000', turn RIGHT to intercept R309° ASB to CRP UGMUR climbing to 3000', then proceed to CRP GIPUN, then to holding area over CRP GUDRA, hold for 3min, then proceed according to the chart.

CHANGE: CAT ILS