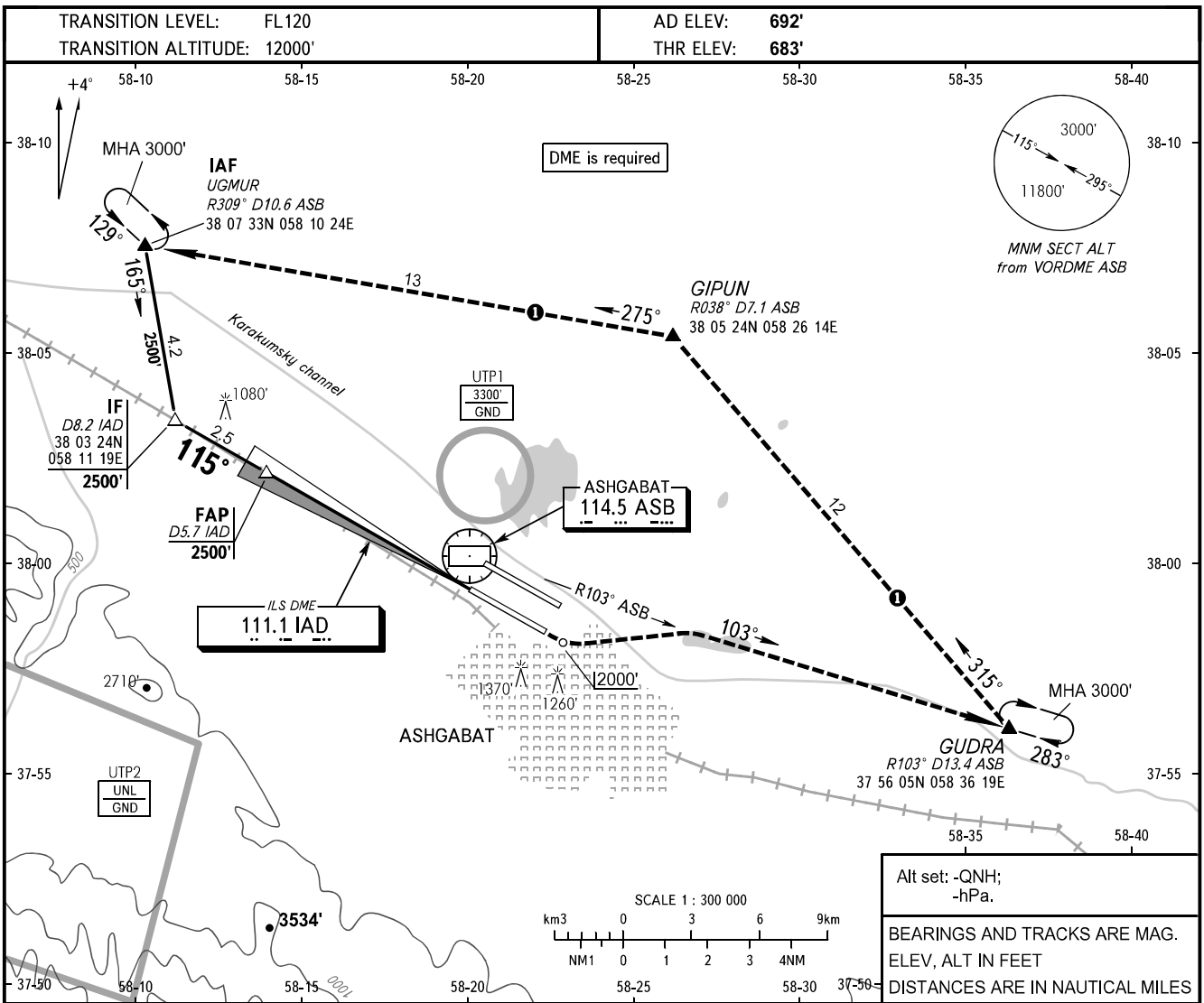


**INSTRUMENT
APPROACH
CHART - ICAO**

APPROACH	123.500
RADAR	118.700
TOWER	118.100

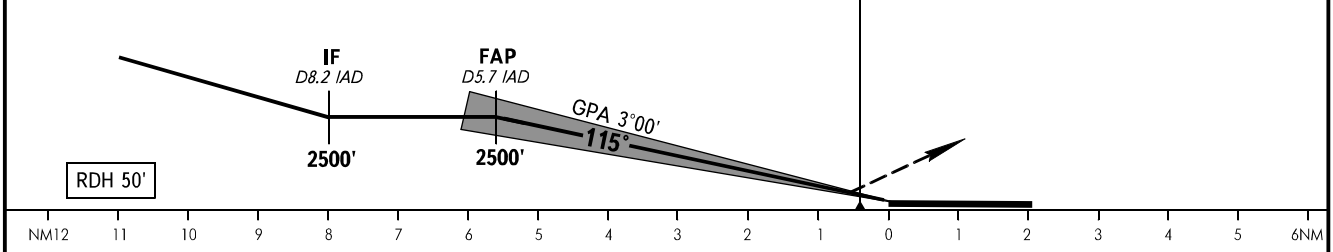
ASHGABAT, TURKMENISTAN
ASHGABAT
ILS RWY 12R CAT I/II/III



Alt set: -QNH;
-hPa.

BEARINGS AND TRACKS ARE MAG.
ELEV, ALT IN FEET
DISTANCES ARE IN NAUTICAL MILES

MISSED APPROACH
Climb on track 115° to 2000',
turn LEFT to intercept R103° ASB
to CRP GUDRA climbing to 3000'
to holding area or by ATC instruction.



OCA(H)		A	B	C	D			
Straight-in Approach	CAT I	815' (132')	824' (141')	834' (151')	844' (161')			
	CAT II	726' (43')	742' (59')	755' (72')	768' (85')			
	CAT IIIA	APPROVED						
GROUND SPEED		KT	70	90	100	120	140	160
RATE OF DESCENT		ft/min	372	478	531	637	743	849

MISSED APPROACH IN CASE OF RADIO COMMUNICATION FAILURE:

- Set SSR transponder to code 7600.
- Climb on track 115° to 2000', turn LEFT to intercept R103° ASB to CRP GUDRA climbing to 3000', then proceed to CRP GIPUN, then to holding area over CRP UGMUR, hold for 3min, then proceed according to the chart.

CHANGE: CAT ILS