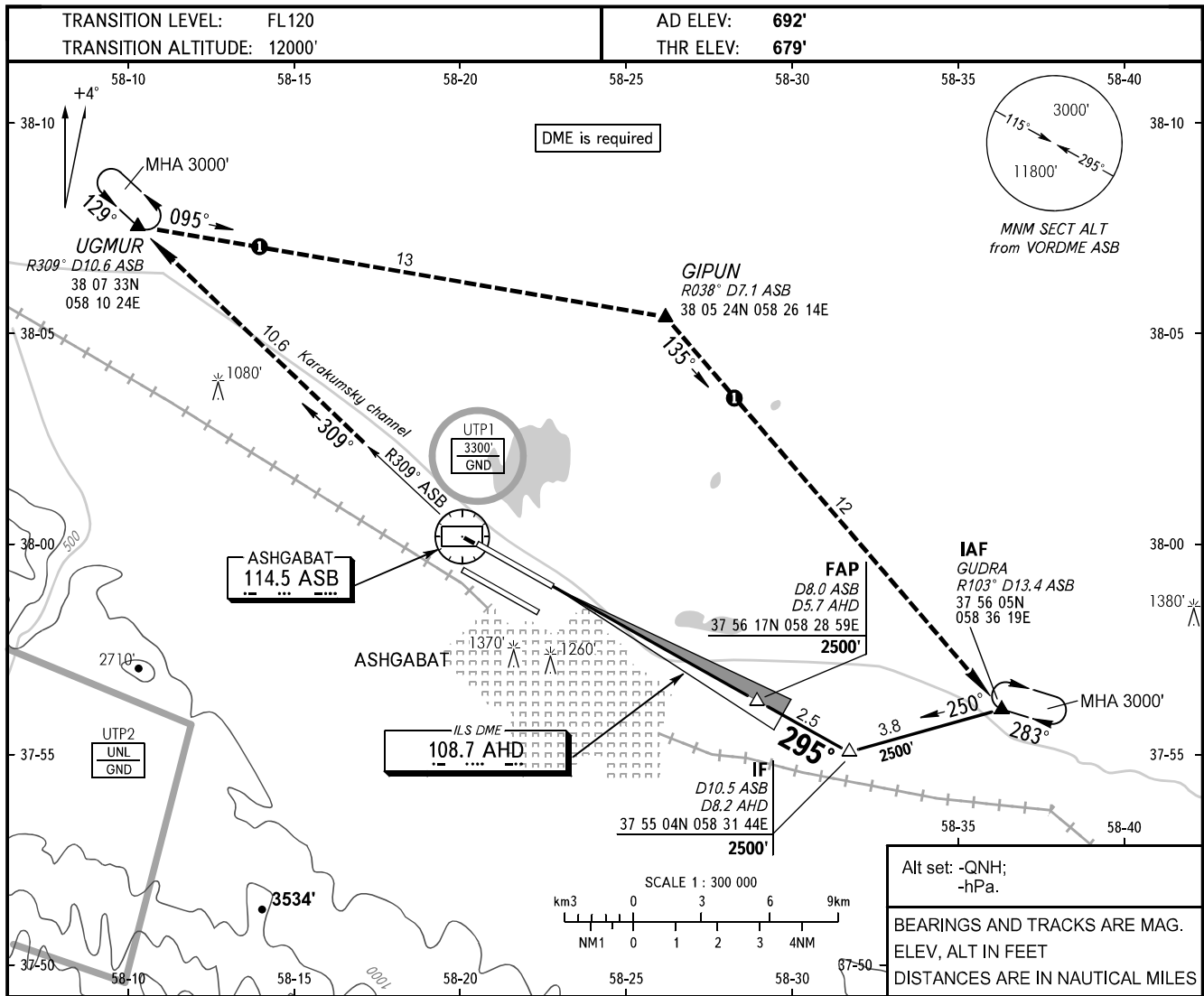


**INSTRUMENT
APPROACH
CHART - ICAO**

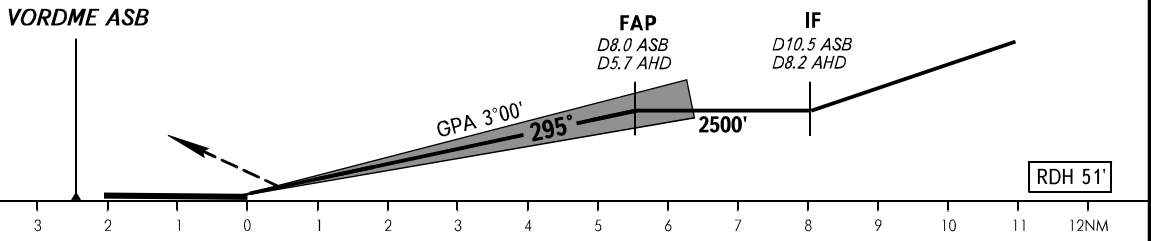
APPROACH	123.500
RADAR	118.700
TOWER	118.100

ASHGABAT, TURKMENISTAN
ASHGABAT
ILS RWY 30R CAT I/II



MISSED APPROACH

Climb to VOR ASB, turn RIGHT to intercept R309° ASB to CRP UGMUR climbing to 3000' to holding area or by ATC instruction.



OCA(H)		A	B	C	D					
Straight-in	CAT II	731' (52')	741' (62')	754' (75')	771' (92')					
	CAT I	823' (144')	833' (154')	846' (167')	859' (180')					
Approach										
GROUND SPEED	KT	70	90	100	120	140	160			
RATE OF DESCENT	ft/min	372	478	531	637	743	849			

1 MISSED APPROACH IN CASE OF RADIO COMMUNICATION FAILURE:

- Set SSR transponder to code 7600.
- Climb on track 295° to VOR ASB, turn RIGHT to intercept R309° ASB to CRP UGMUR climbing to 3000', then proceed to CRP GIPUN, then to holding area over CRP GUDRA, hold for 3min, then proceed according to the chart.