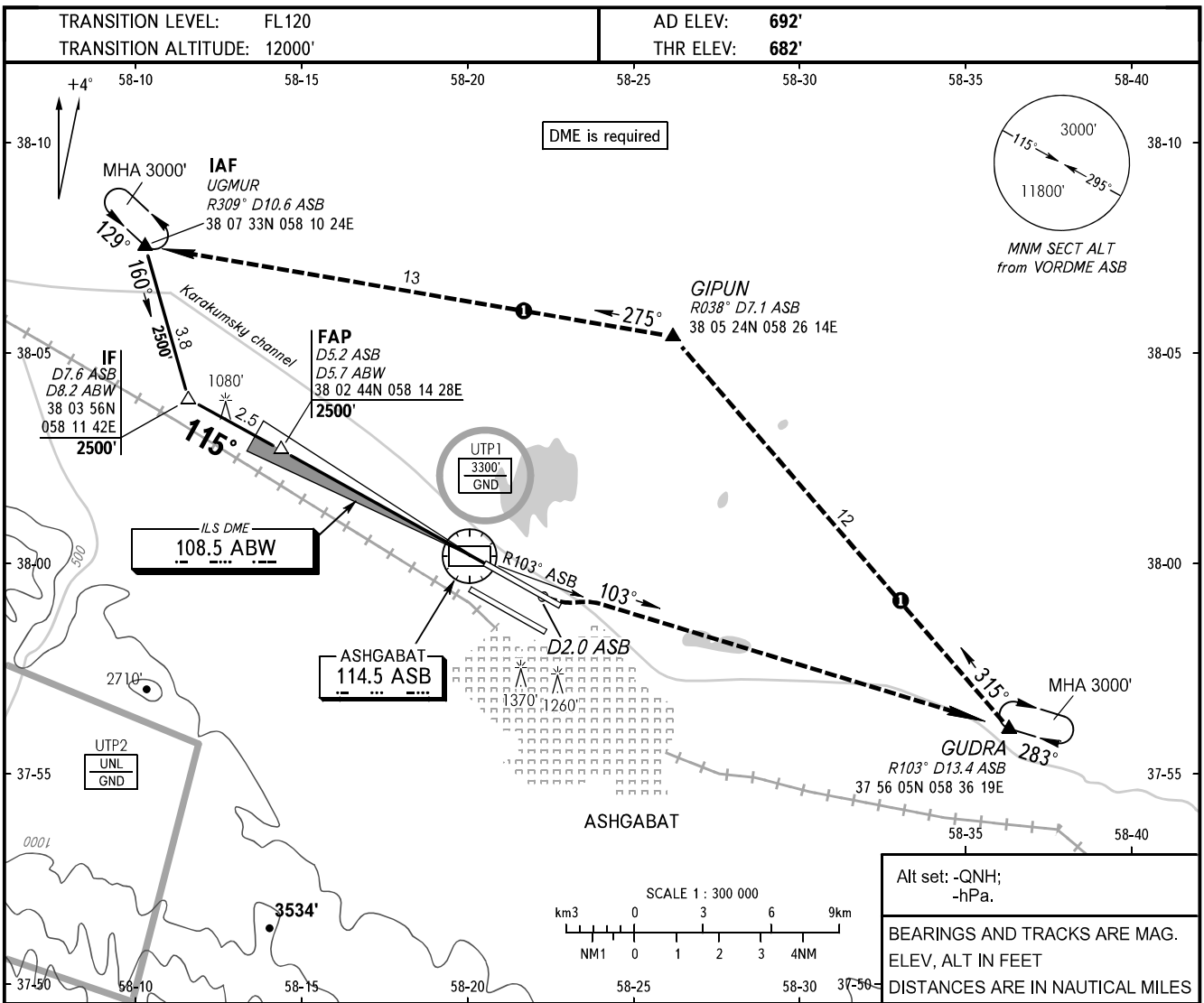


**INSTRUMENT  
APPROACH  
CHART - ICAO**

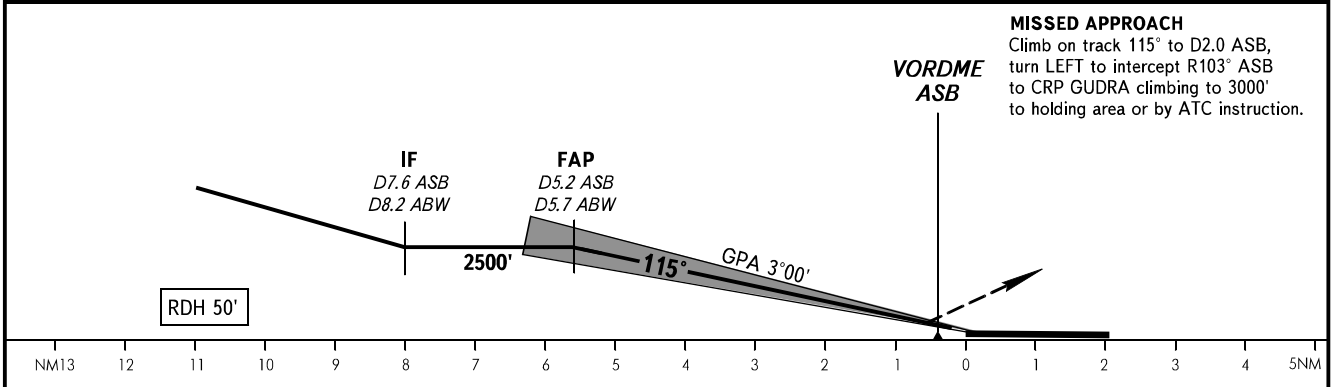
APPROACH	<b>123.500</b>
RADAR	<b>118.700</b>
TOWER	<b>118.100</b>

**ASHGABAT, TURKMENISTAN**  
ASHGABAT  
ILS RWY 12L CAT I/II



Alt set: -QNH;  
-hPa.

BEARINGS AND TRACKS ARE MAG.  
ELEV, ALT IN FEET  
DISTANCES ARE IN NAUTICAL MILES



**MISSED APPROACH**  
Climb on track 115° to D2.0 ASB,  
turn LEFT to intercept R103° ASB  
to CRP GUDRA climbing to 3000'  
to holding area or by ATC instruction.

OCA(H)		A	B	C	D					
Straight-in	<b>CAT II</b>	731' (49')	741' (59')	754' (72')	767' (85')					
	<b>CAT I</b>	820' (138')	826' (144')	836' (154')	846' (164')					
Approach										
GROUND SPEED		KT	70	90	100	120	140	160		
RATE OF DESCENT		ft/min	372	478	531	637	743	849		

**MISSED APPROACH IN CASE OF RADIO COMMUNICATION FAILURE:**

1. Set SSR transponder to code 7600.
2. Climb on track 115° to D2.0 ASB, turn LEFT to intercept R103° ASB to CRP GUDRA climbing to 3000', then proceed to CRP GIPUN, then to holding area over CRP UGMUR, hold for 3min, then proceed according to the chart.