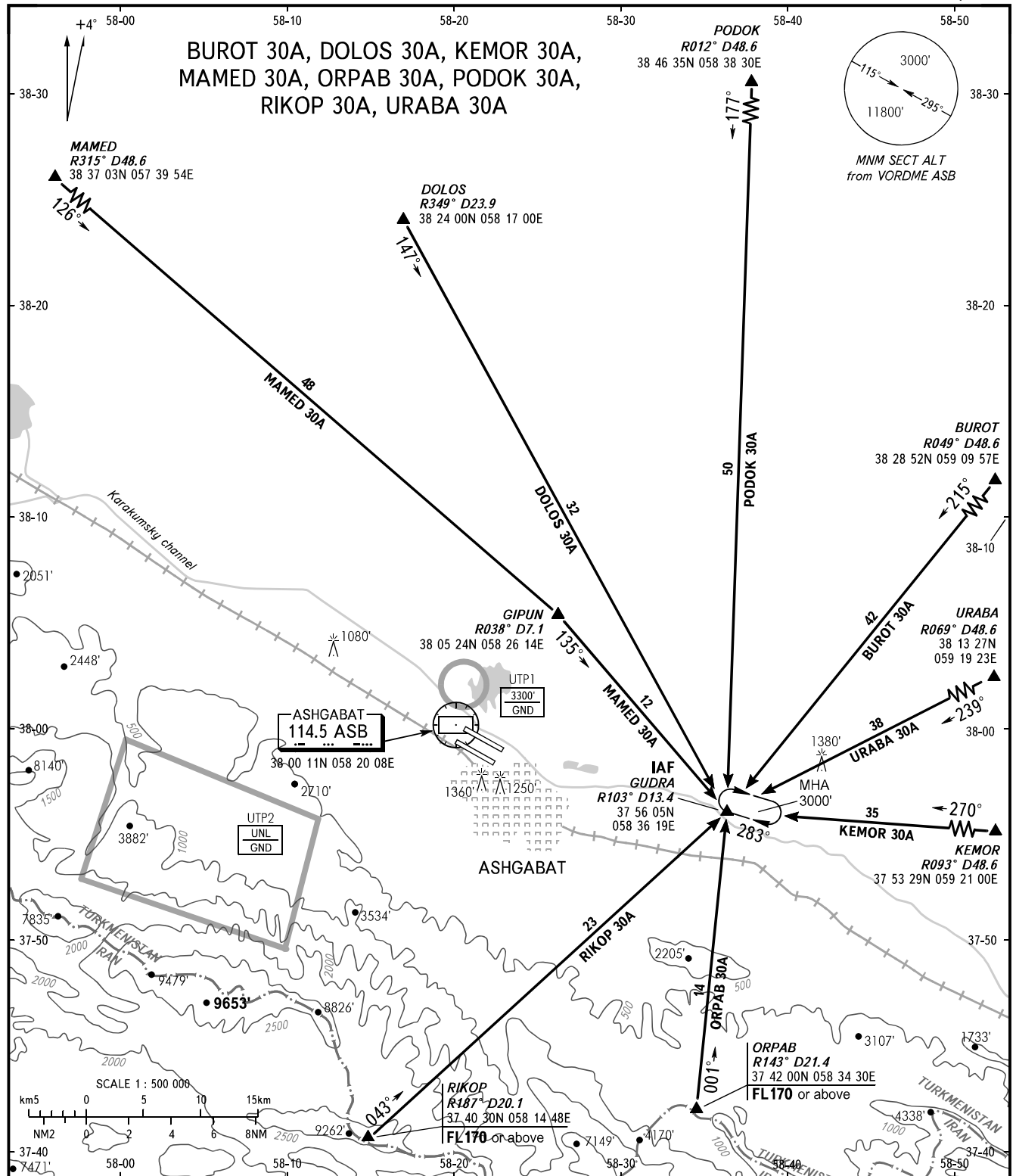


STANDARD ARRIVAL CHART
INSTRUMENT (STAR) - ICAO

TRANSITION
LEVEL : FL120

ASHGABAT, TURKMENISTAN
ASHGABAT
RWY 30L/30R



APPROACH	123.500
RADAR	118.700
TOWER	118.100

BEARINGS AND TRACKS ARE MAGNETIC
ALTITUDES AND ELEVATIONS ARE IN FEET
DISTANCES ARE IN NAUTICAL MILES

CHANGE: Route