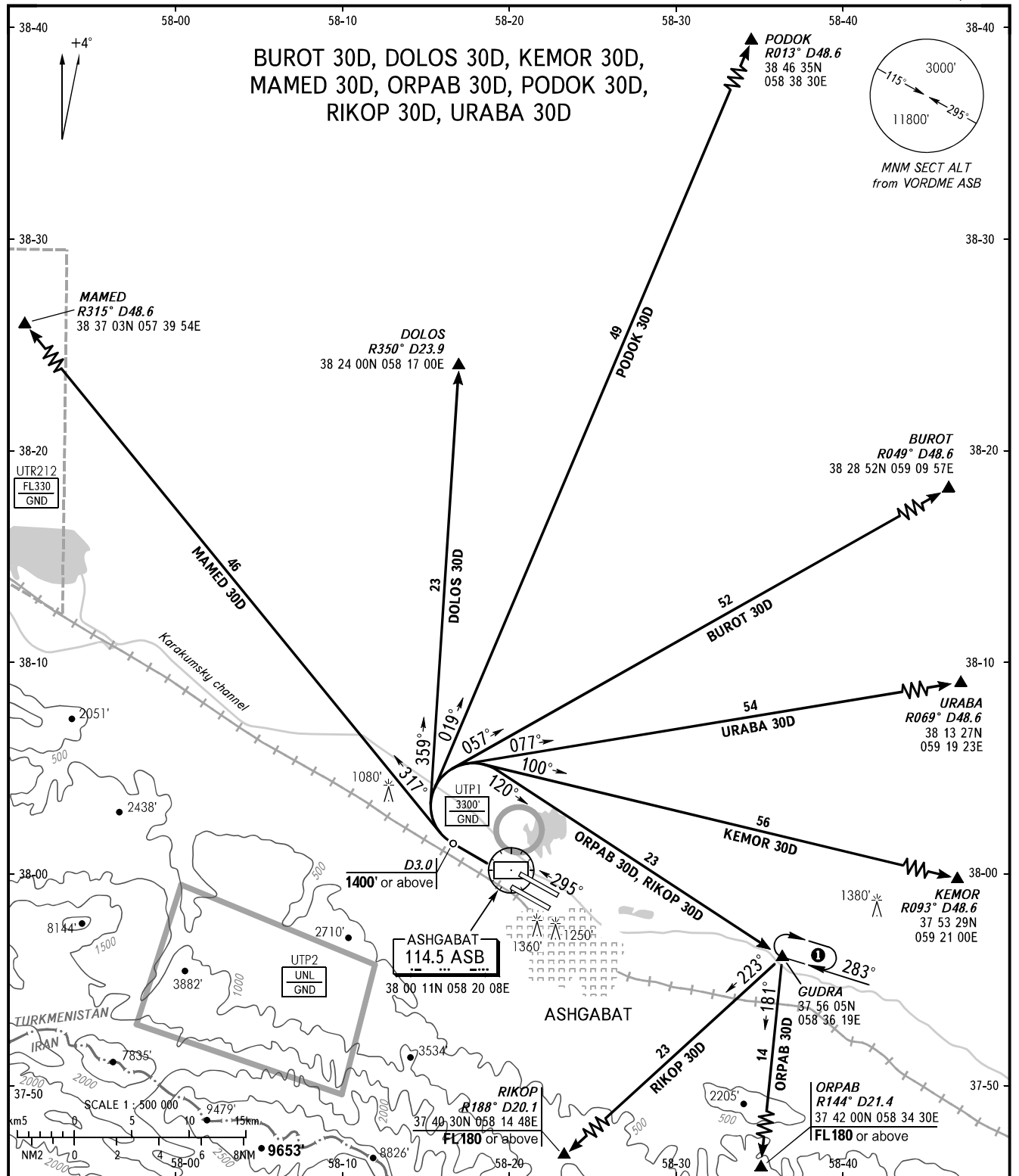


STANDARD DEPARTURE CHART
INSTRUMENT (SID) - ICAO

TRANSITION
ALTITUDE : 12000'

ASHGABAT, TURKMENISTAN
ASHGABAT
RWY 30L/30R



TOWER	118.100
RADAR	118.700
APPROACH	123.500

① Proceed to GUDRA climbing to FL130 or above, then to RIKOP or ORPAB climbing to FL180 or above. If unable to reach these flight levels, execute climbing in the holding area over GUDRA.

BEARINGS AND TRACKS ARE MAGNETIC
ALTITUDES AND ELEVATIONS ARE IN FEET
DISTANCES ARE IN NAUTICAL MILES

AIRAC AMDT 07/16

Federal Air Transport Agency

CHANGE: Route