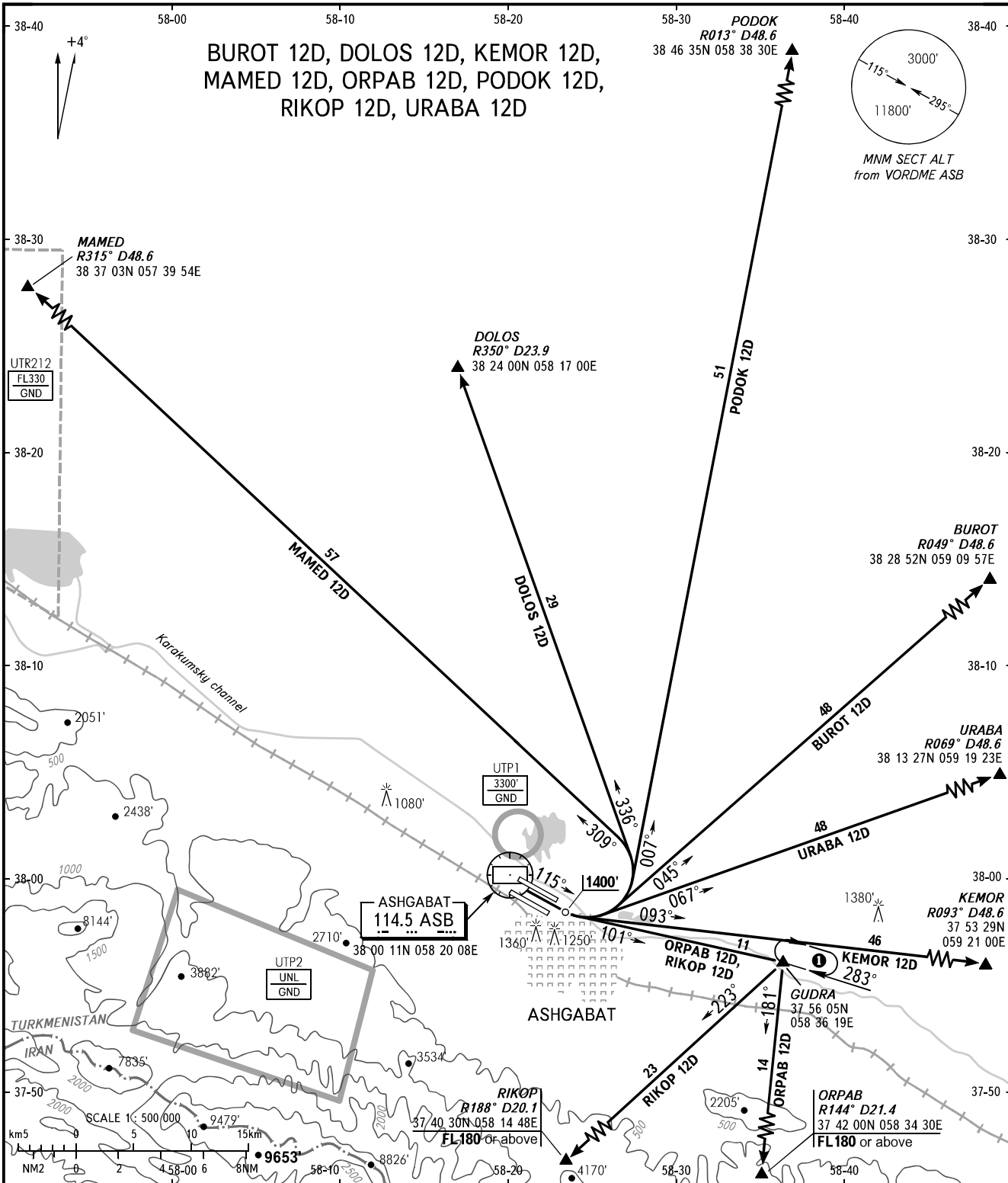


STANDARD DEPARTURE CHART
INSTRUMENT (SID) - ICAO

TRANSITION
ALTITUDE : 12000'

ASHGABAT, TURKMENISTAN

ASHGABAT
RWY 12L/12R



TOWER 118.100
RADAR 118.700
APPROACH 123.500

① Proceed to GUDRA climbing to FL130 or above, then to RIKOP or ORPAB climbing to FL180 or above. If unable to reach these flight levels, execute climbing in the holding area over GUDRA.

BEARINGS AND TRACKS ARE MAGNETIC
ALTITUDES AND ELEVATIONS ARE IN FEET
DISTANCES ARE IN NAUTICAL MILES

CHANGE: Route