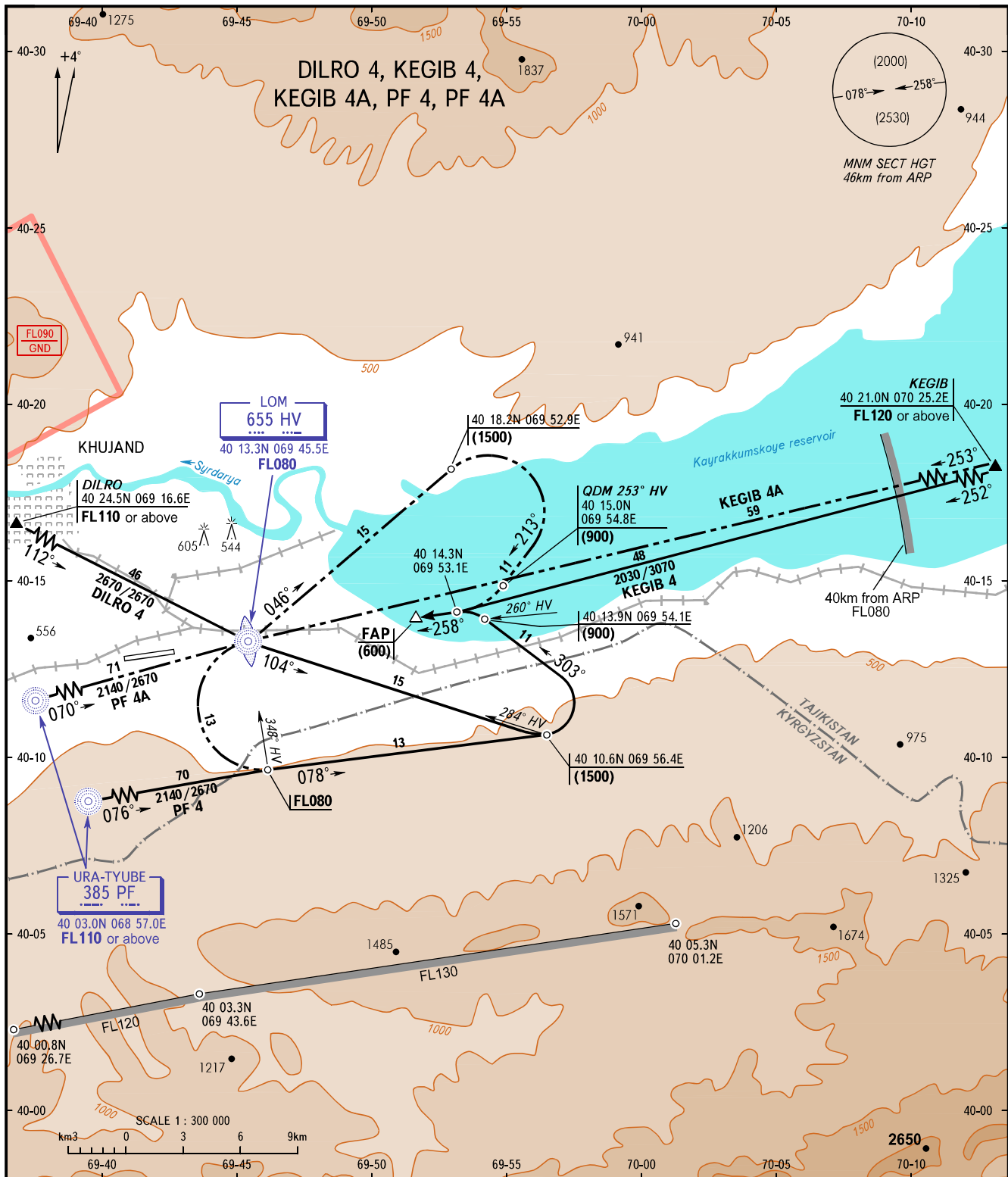


STANDARD ARRIVAL CHART
INSTRUMENT (STAR) - ICAO

TRANSITION
LEVEL: FL080

KHUJAND, TAJIKISTAN
KHUJAND
RWY 26



CONTROL 124.800
RADAR 120.300
TOWER 120.300

BEARINGS AND TRACKS ARE MAGNETIC
ALTITUDES, HEIGHTS AND ELEVATIONS ARE IN METRES
DISTANCES ARE IN KILOMETRES