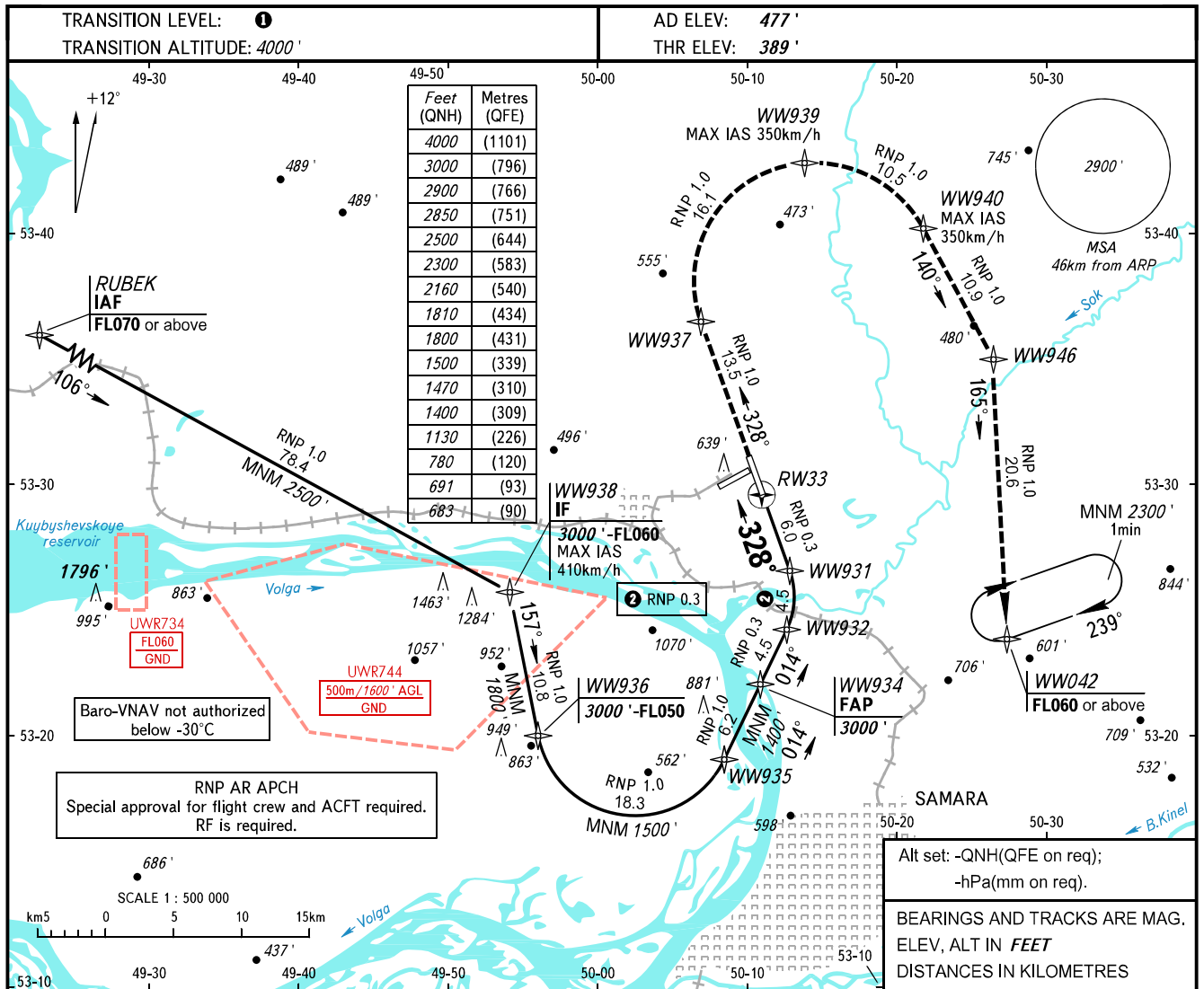


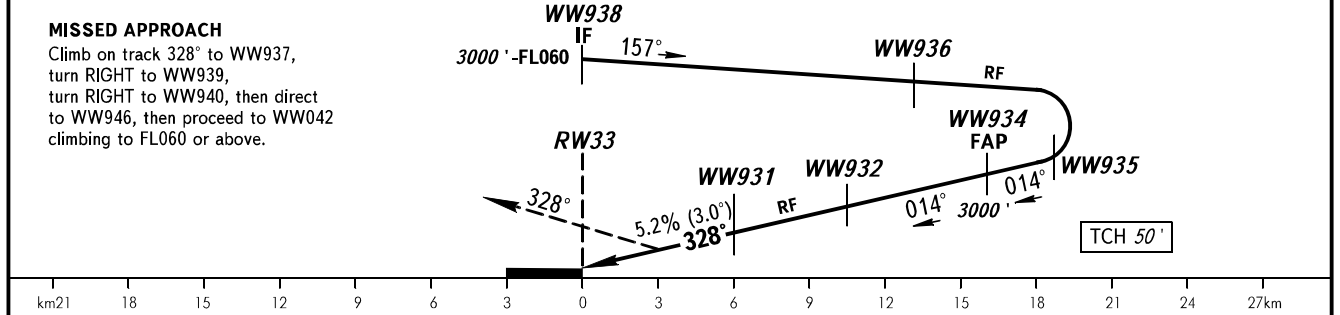
**INSTRUMENT  
APPROACH  
CHART - ICAO**

|          |         |
|----------|---------|
| APPROACH | 124.600 |
| RADAR    | 128.000 |
| TOWER    | 118.200 |

**SAMARA, RUSSIA  
KURUMOCH  
RNP X RWY 33 (AR)**



|              |      |       |       |       |       |       |       |
|--------------|------|-------|-------|-------|-------|-------|-------|
| DIST TO RW33 | 2.0  | 4.0   | 6.0   | 8.0   | 10.0  | 12.0  | 14.0  |
| ALTITUDE     | 780' | 1130' | 1470' | 1810' | 2160' | 2500' | 2850' |



| OCA(H)               |           | A           | B           | C           | D           |     |     |     |      |
|----------------------|-----------|-------------|-------------|-------------|-------------|-----|-----|-----|------|
| Straight-in Approach | RNP (0.3) | 683' (296') | 683' (296') | 683' (296') | 691' (302') |     |     |     |      |
|                      |           |             |             |             |             |     |     |     |      |
| GROUND SPEED         | km/h      | 150         | 180         | 210         | 240         | 270 | 300 | 330 | 360  |
| RATE OF DESCENT      | m/s       | 2.2         | 2.6         | 3.0         | 3.5         | 3.9 | 4.3 | 4.8 | 5.2  |
|                      | ft/min    | 433         | 512         | 591         | 689         | 768 | 846 | 945 | 1024 |

**1** TRANSITION LEVEL:  
 - FL050 when QNH is 1013 hPa (760mm mercury column) or above;  
 - FL060 when QNH is 977 hPa (733mm mercury column) or above, but less than 1013 hPa (760mm mercury column);  
 - FL070 when QNH is less than 977 hPa (733mm mercury column).