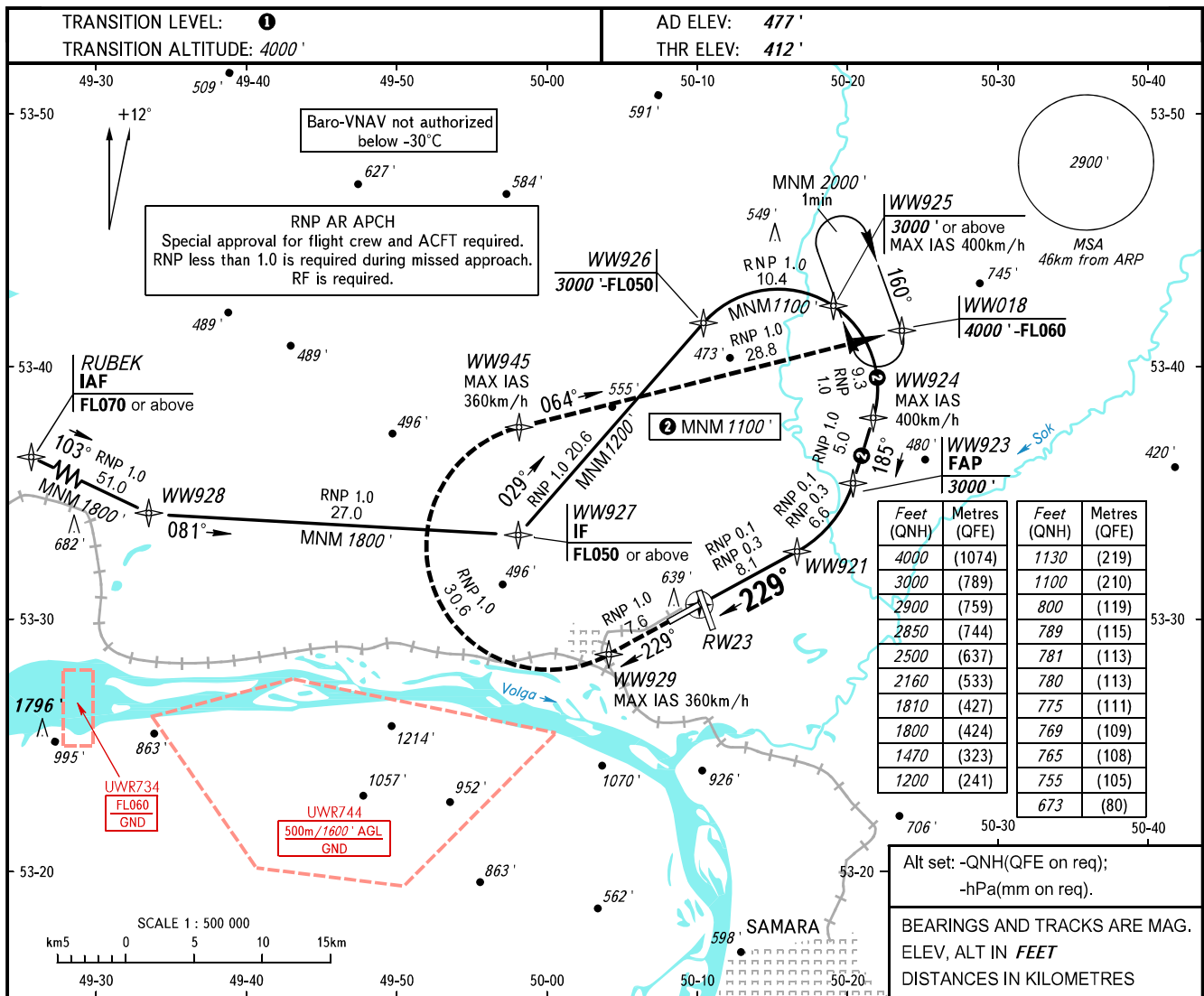


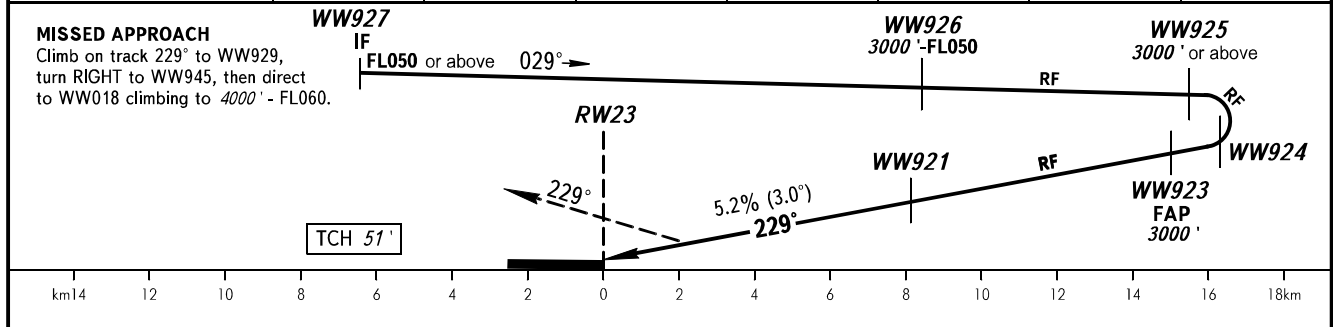
**INSTRUMENT
APPROACH
CHART - ICAO**

APPROACH	124.600
RADAR	128.000
TOWER	118.200

**SAMARA, RUSSIA
KURUMOCH
RNP X RWY 23 (AR)**



DIST to RW23	2.0	4.0	6.0	8.0	10.0	12.0	14.0
ALTITUDE	780'	1130'	1470'	1810'	2160'	2500'	2850'



OCA(H)		A	B	C	D				
Straight-in Approach	RNP (0.3)	769' (379')	781' (391')	789' (400')	800' (411')				
	RNP (0.1)	673' (284')	755' (366')	765' (376')	775' (386')				
GROUND SPEED	km/h	150	180	210	240	270	300	330	360
RATE OF DESCENT	m/s	2.2	2.6	3.0	3.5	3.9	4.3	4.8	5.2
	ft/min	433	512	591	689	768	846	945	1024

TRANSITION LEVEL:
- FL050 when QNH is 1013 hPa (760mm mercury column) or above;
- FL060 when QNH is 977 hPa (733mm mercury column) or above, but less than 1013 hPa (760mm mercury column);
- FL070 when QNH is less than 977 hPa (733mm mercury column).