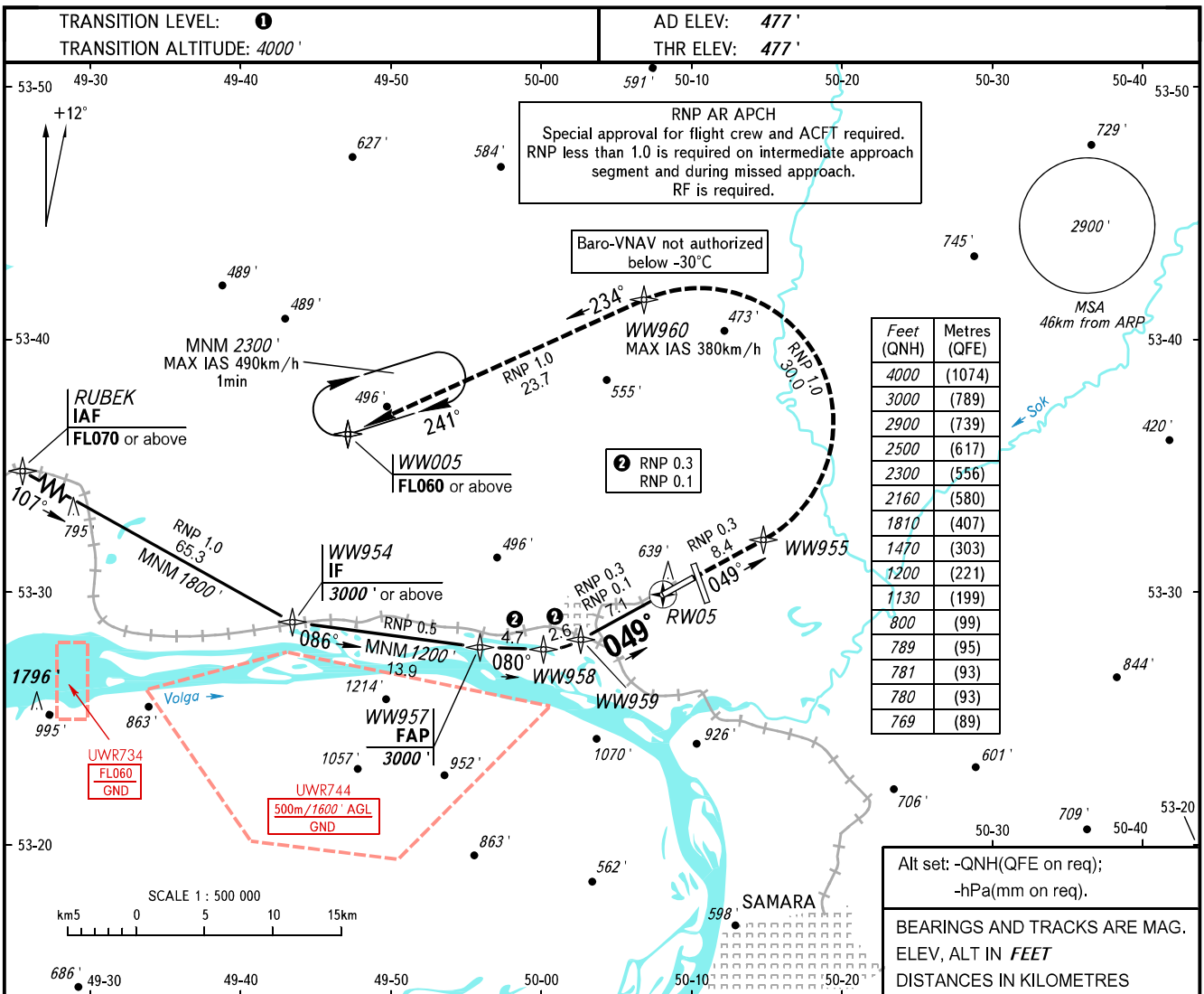


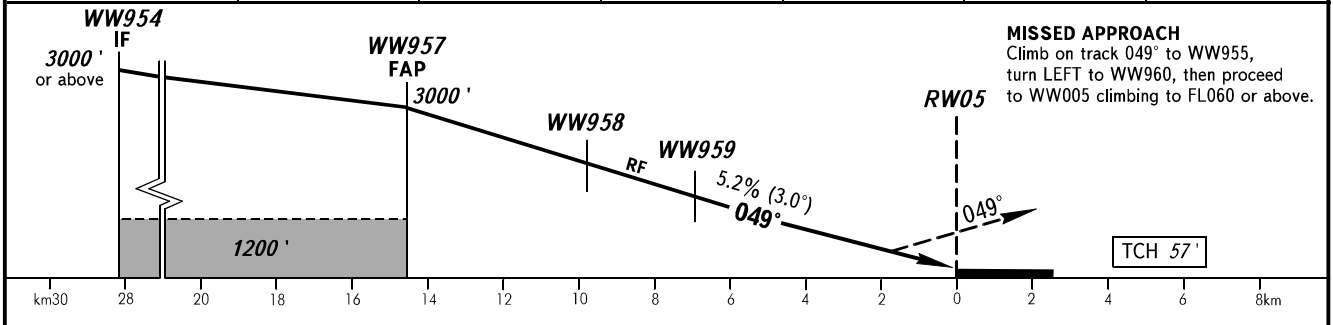
**INSTRUMENT
APPROACH
CHART - ICAO**

APPROACH	124.600
RADAR	128.000
TOWER	118.200

SAMARA, RUSSIA
KURUMOCH
RNP X RWY 05 (AR)



DIST to RW05	12.0	10.0	8.0	6.0	4.0	2.0
ALTITUDE	2500'	2160'	1810'	1470'	1130'	780'



OCA(H)		A	B	C	D					
Straight-in Approach	RNP (0.3)	769' (292')	781' (304')	789' (312')	800' (323')					
	RNP (0.1)	769' (292')	781' (304')	789' (312')	800' (323')					
GROUND SPEED		km/h	150	180	210	240	270	300	330	360
RATE OF DESCENT		m/s	2.2	2.6	3.0	3.5	3.9	4.3	4.8	5.2
		ft/min	433	512	591	689	768	846	945	1024

1 TRANSITION LEVEL:
 - FL050 when QNH is 1013 hPa (760mm mercury column) or above;
 - FL060 when QNH is 977 hPa (733mm mercury column) or above, but less than 1013 hPa (760mm mercury column);
 - FL070 when QNH is less than 977 hPa (733mm mercury column).

CHANGE: New chart