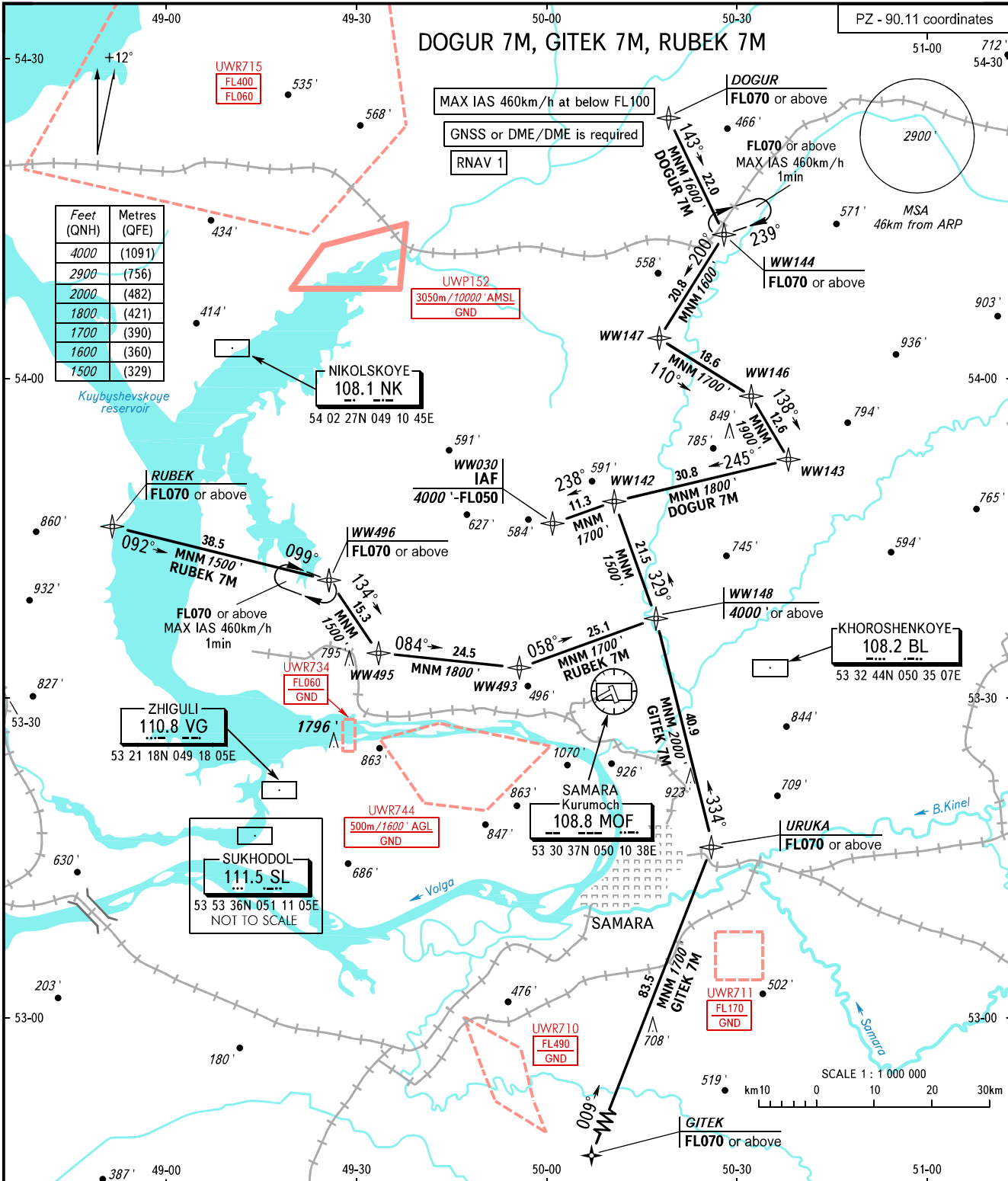


STANDARD ARRIVAL CHART
INSTRUMENT (STAR) - ICAO

SAMARA, RUSSIA
KURUMOCH
RNAV Rwy 15

TRANSITION
LEVEL: **1**



Feet (QNH)	Metres (QFE)
4000	(1091)
2900	(756)
2000	(482)
1800	(421)
1700	(390)
1600	(360)
1500	(329)

APPROACH **124.600**
RADAR **128.000**
TOWER **118.200**

- 1** TRANSITION LEVEL:
- FL050 when QNH is 1013 hPa (760mm mercury column) or above;
 - FL060 when QNH is 977 hPa (733mm mercury column) or above, but less than 1013 hPa (760mm mercury column);
 - FL070 when QNH is less than 977 hPa (733mm mercury column).

BEARINGS AND TRACKS ARE MAGNETIC
ALTITUDES AND ELEVATIONS IN FEET
DISTANCES IN KILOMETRES

CHANGE: New chart