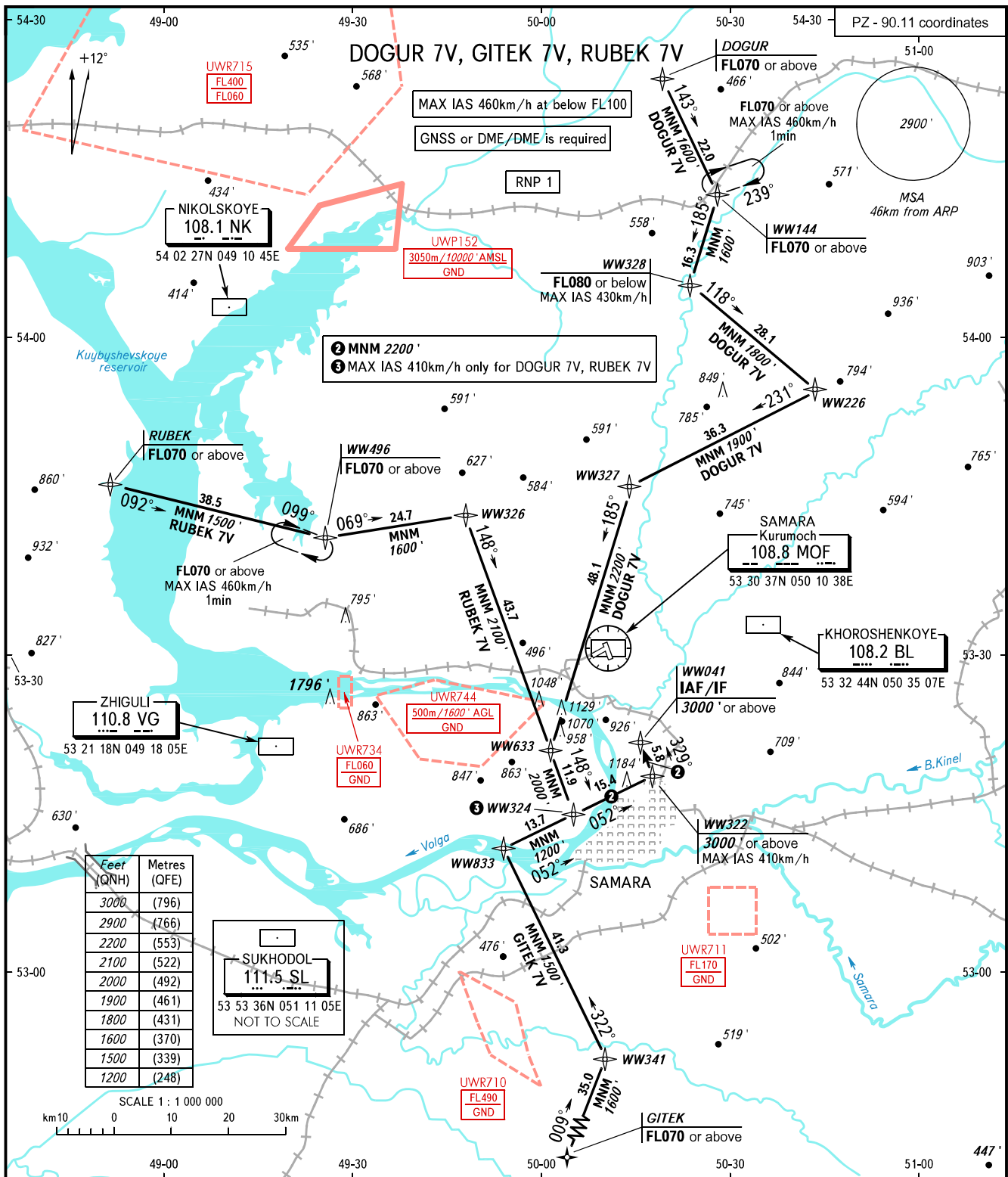


STANDARD ARRIVAL CHART  
INSTRUMENT (STAR) - ICAO

SAMARA, RUSSIA  
KURUMOCH  
RNP RWY 33

TRANSITION  
LEVEL: **1**



PZ - 90.11 coordinates

**2** MNM 2200'  
**3** MAX IAS 410km/h only for DOGUR 7V, RUBEK 7V

MAX IAS 460km/h at below FL100  
GNSS or DME/DME is required

DOGUR  
FL070 or above  
MAX IAS 460km/h  
1min  
MSA  
46km from ARP

NIKOLSKOYE  
108.1 NK  
54 02 27N 049 10 45E

SAMARA  
Kurumoch  
108.8 MOF  
53 30 37N 050 10 38E

KHOROSHENKOYE  
108.2 BL  
53 32 44N 050 35 07E

ZHIGULI  
110.8 VG  
53 21 18N 049 18 05E

SUKHODOL  
111.5 SL  
53 53 36N 051 11 05E  
NOT TO SCALE

Feet (QNH)	Metres (QFE)
3000	(796)
2900	(766)
2200	(553)
2100	(522)
2000	(492)
1900	(461)
1800	(431)
1600	(370)
1500	(339)
1200	(248)

SCALE 1 : 1 000 000  
km 10 0 10 20 30km

APPROACH **124.600**  
RADAR **128.000**  
TOWER **118.200**

**1** TRANSITION LEVEL:  
- FL050 when QNH is 1013 hPa (760mm mercury column) or above;  
- FL060 when QNH is 977 hPa (733mm mercury column) or above, but less than 1013 hPa (760mm mercury column);  
- FL070 when QNH is less than 977 hPa (733mm mercury column).

BEARINGS AND TRACKS ARE MAGNETIC  
ALTITUDES AND ELEVATIONS IN FEET  
DISTANCES IN KILOMETRES