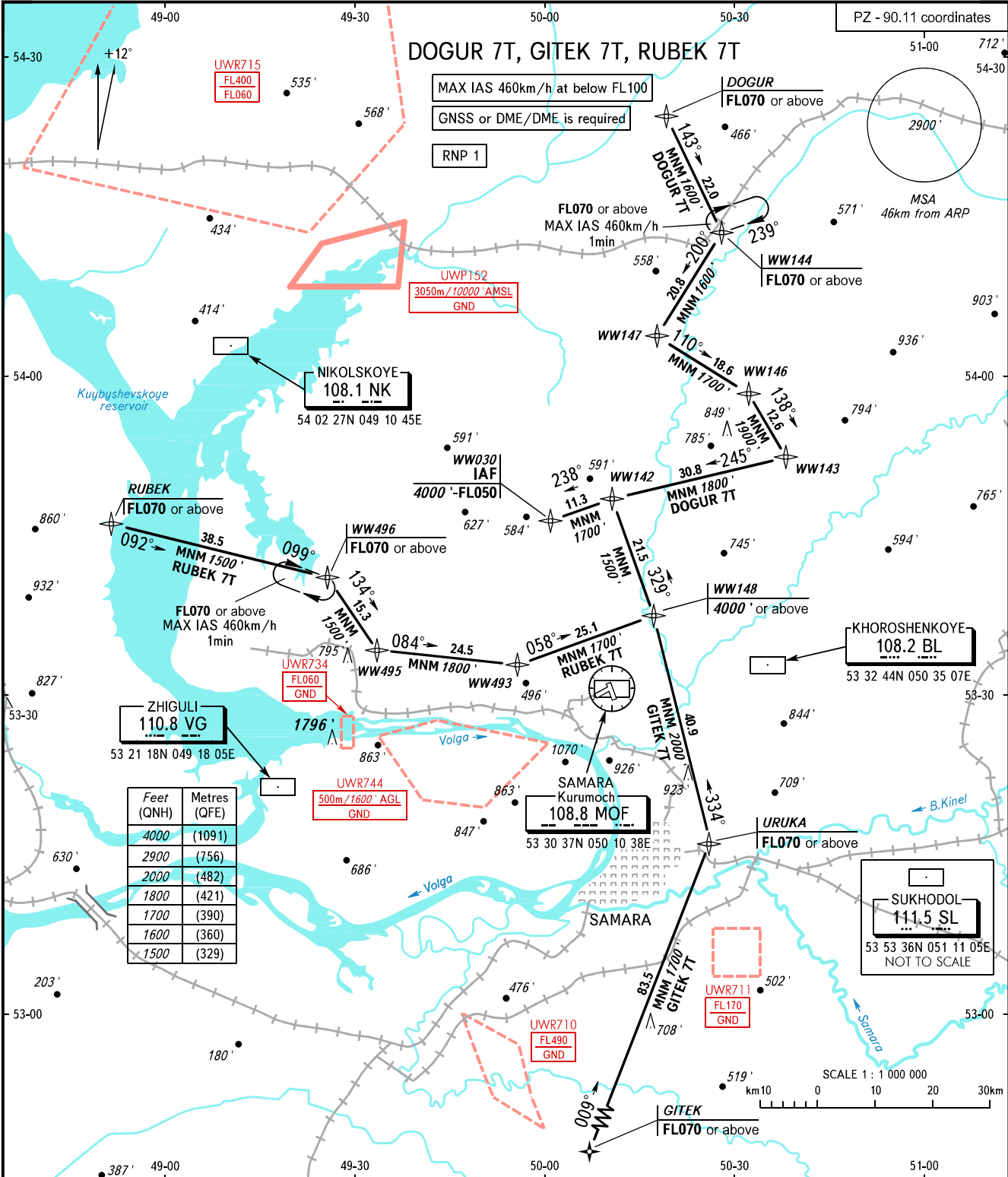


STANDARD ARRIVAL CHART
INSTRUMENT (STAR) - ICAO

SAMARA, RUSSIA
KURUMOCH
RNP RWY 15

TRANSITION
LEVEL: **1**



| Feet (QNH) | Metres (QFE) |
|------------|--------------|
| 4000 | (1091) |
| 2900 | (756) |
| 2000 | (482) |
| 1800 | (421) |
| 1700 | (390) |
| 1600 | (360) |
| 1500 | (329) |

APPROACH **124.600**
RADAR **128.000**
TOWER **118.200**

- ① TRANSITION LEVEL:
- FL050 when QNH is 1013 hPa (760mm mercury column) or above;
 - FL060 when QNH is 977 hPa (733mm mercury column) or above, but less than 1013 hPa (760mm mercury column);
 - FL070 when QNH is less than 977 hPa (733mm mercury column).

BEARINGS AND TRACKS ARE MAGNETIC
ALTITUDES AND ELEVATIONS IN FEET
DISTANCES IN KILOMETRES

CHANGE: New chart