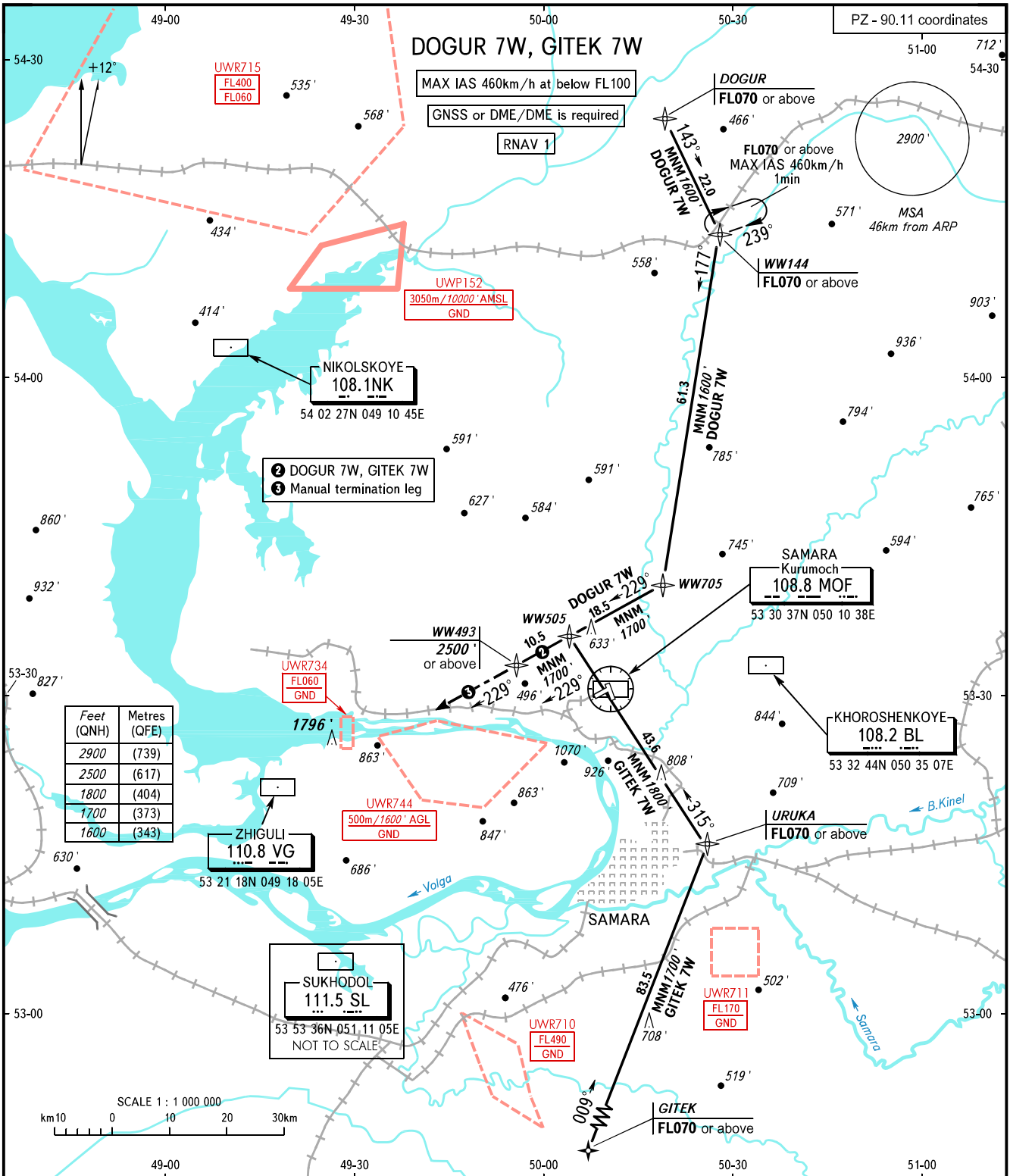


STANDARD ARRIVAL CHART  
INSTRUMENT (STAR) - ICAO

SAMARA, RUSSIA  
KURUMOCH  
RNAV RWY 05

TRANSITION  
LEVEL: **1**



Feet (QNH)	Metres (QFE)
2900	(739)
2500	(617)
1800	(404)
1700	(373)
1600	(343)

APPROACH **124.600**  
RADAR **128.000**  
TOWER **118.200**

**1** TRANSITION LEVEL:  
- FL050 when QNH is 1013 hPa (760mm mercury column) or above;  
- FL060 when QNH is 977 hPa (733mm mercury column) or above, but less than 1013 hPa (760mm mercury column);  
- FL070 when QNH is less than 977 hPa (733mm mercury column).

BEARINGS AND TRACKS ARE MAGNETIC  
ALTITUDES AND ELEVATIONS IN FEET  
DISTANCES IN KILOMETRES