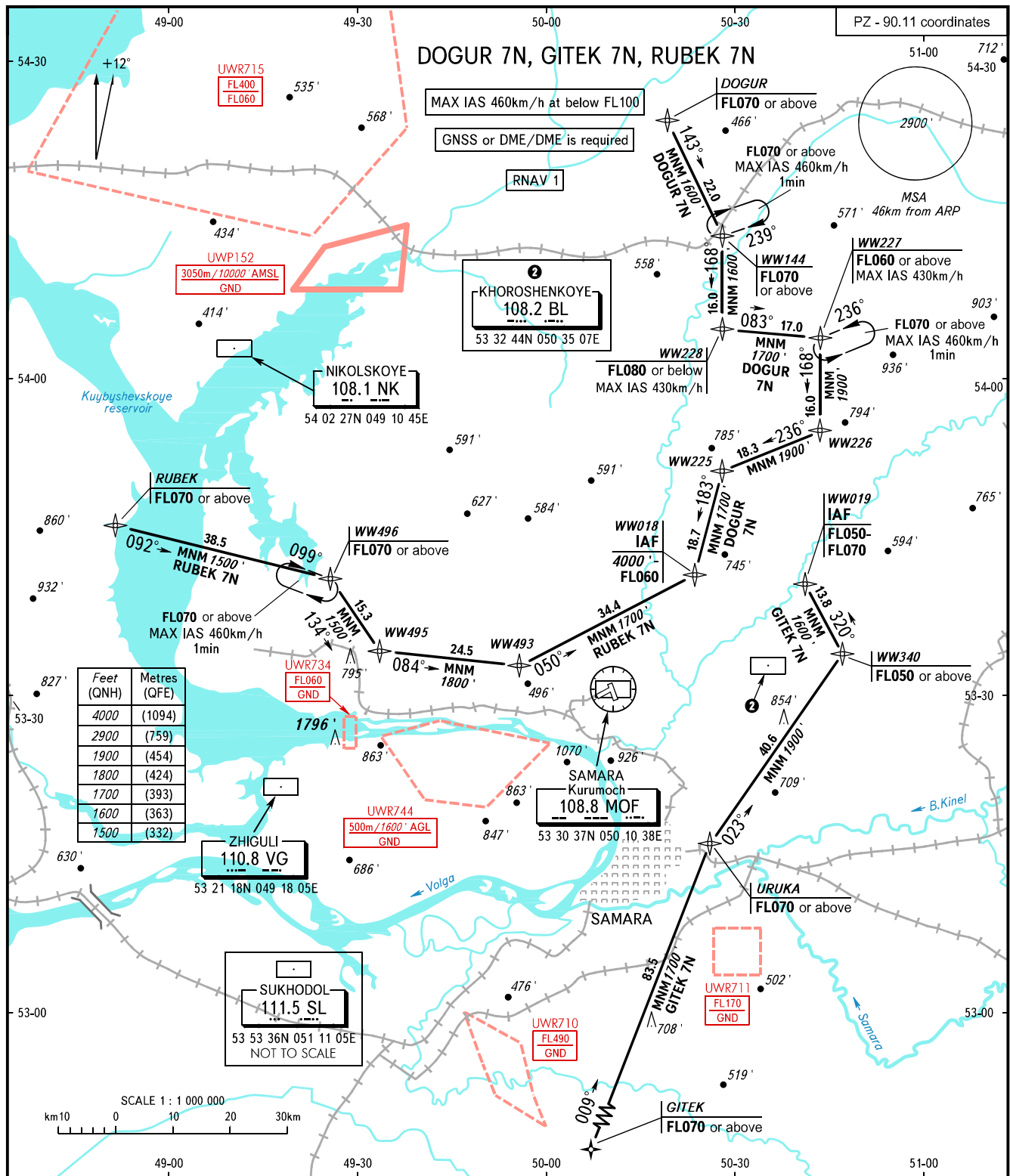


STANDARD ARRIVAL CHART  
INSTRUMENT (STAR) - ICAO

SAMARA, RUSSIA  
KURUMOCH  
RNAV RWY 23

TRANSITION  
LEVEL: 1



APPROACH 124.600  
RADAR 128.000  
TOWER 118.200

- 1 TRANSITION LEVEL:
- FLO50 when QNH is 1013 hPa (760mm mercury column) or above;
  - FLO60 when QNH is 977 hPa (733mm mercury column) or above, but less than 1013 hPa (760mm mercury column);
  - FLO70 when QNH is less than 977 hPa (733mm mercury column).

BEARINGS AND TRACKS ARE MAGNETIC  
ALTITUDES AND ELEVATIONS IN FEET  
DISTANCES IN KILOMETRES