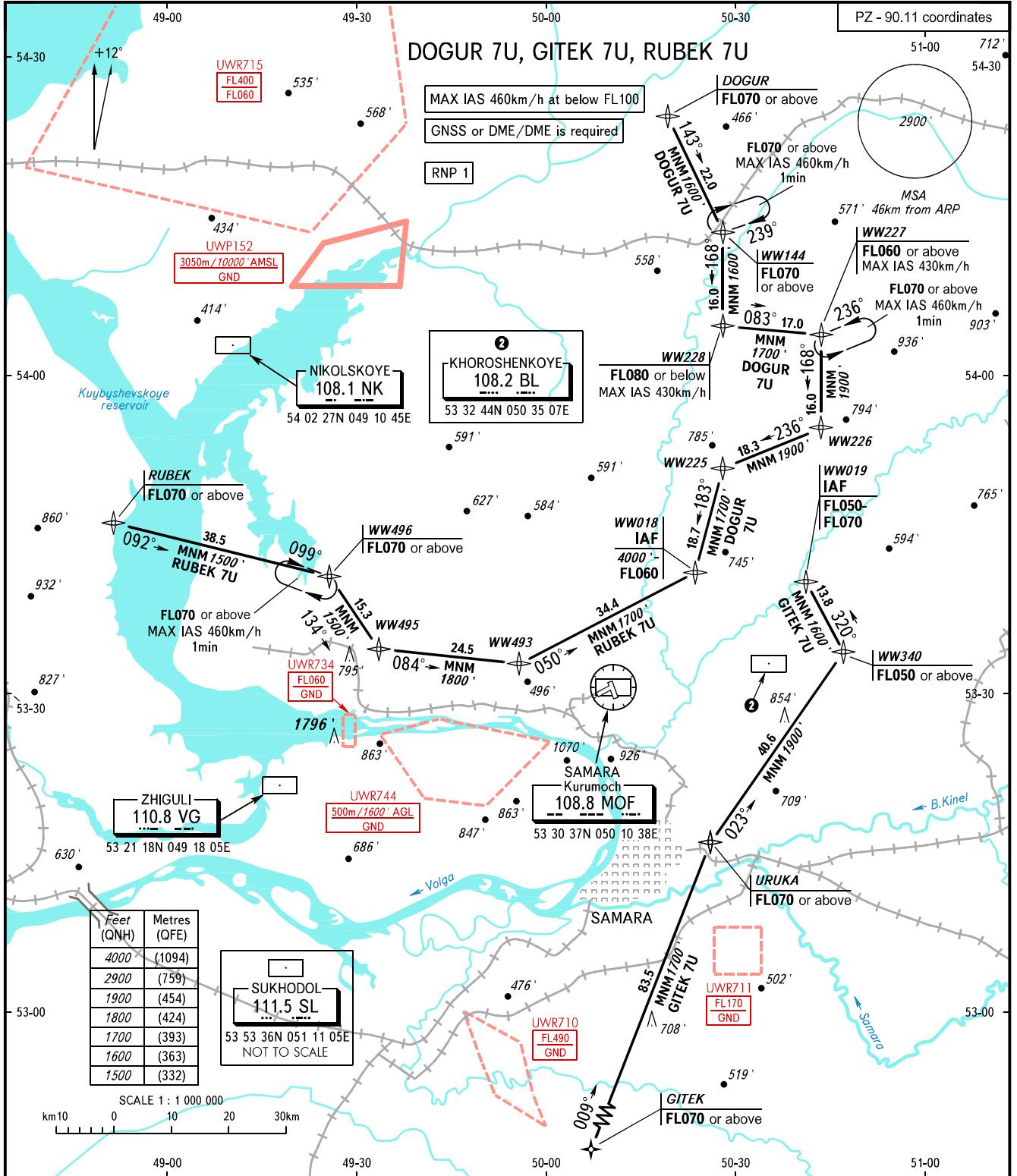


STANDARD ARRIVAL CHART  
INSTRUMENT (STAR) - ICAO

SAMARA, RUSSIA  
KURUMOCH  
RNP RWY 23

TRANSITION  
LEVEL: **1**



APPROACH **124.600**  
RADAR **128.000**  
TOWER **118.200**

- 1** TRANSITION LEVEL:
- FLO50 when QNH is 1013 hPa (760mm mercury column) or above;
  - FLO60 when QNH is 977 hPa (733mm mercury column) or above, but less than 1013 hPa (760mm mercury column);
  - FLO70 when QNH is less than 977 hPa (733mm mercury column).

BEARINGS AND TRACKS ARE MAGNETIC  
ALTITUDES AND ELEVATIONS IN FEET  
DISTANCES IN KILOMETRES