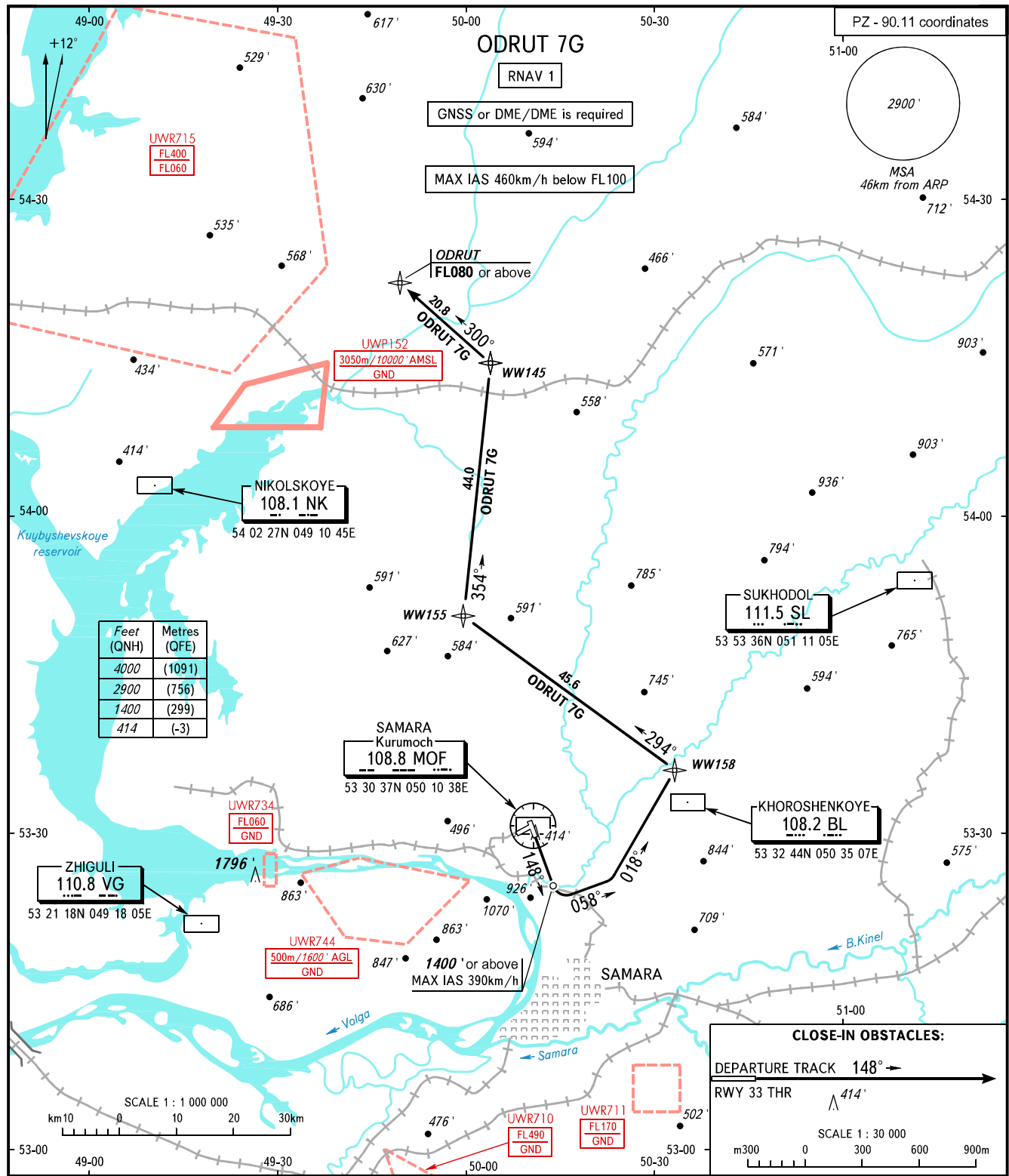


STANDARD DEPARTURE CHART
INSTRUMENT (SID) - ICAO

TRANSITION
ALTITUDE: 4000'

SAMARA, RUSSIA
KURUMOCH
RNAV RWY 15



Feet (QNH)	Metres (QFE)
4000	(1091)
2900	(756)
1400	(299)
414	(-3)

CLOSE-IN OBSTACLES:

DEPARTURE TRACK 148° →

RWY 33 THR ▲ 414'

SCALE 1 : 30 000

m 300 0 300 600 900m

TOWER 118.200
RADAR 128.000
APPROACH 124.600

NOTE
Turn before DER is PROHIBITED.

BEARINGS AND TRACKS ARE MAGNETIC
ALTITUDES AND ELEVATIONS IN FEET
DISTANCES IN KILOMETRES