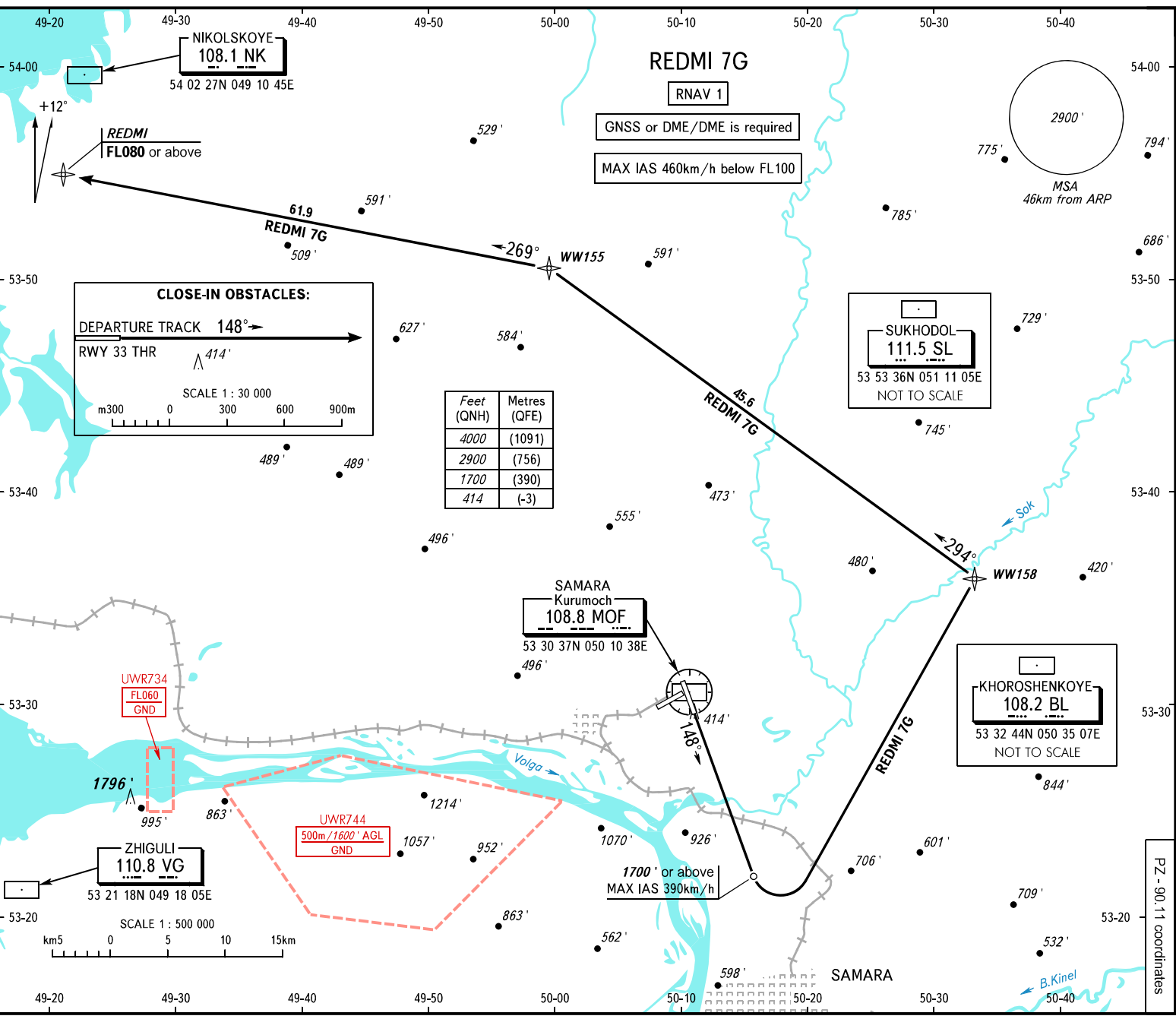


STANDARD DEPARTURE CHART
INSTRUMENT (SID) - ICAO
TRANSITION ALTITUDE: 4000'

SAMARA, RUSSIA
KURUMOCH
RNAV Rwy 15



TOWER 118.200
RADAR 128.000
APPROACH 124.600

NOTES:
1. The minimum climb gradient due to the airspace structure is 5.0% up to 1700'.
2. Turn before DER is PROHIBITED.

BEARINGS AND TRACKS ARE MAGNETIC
ALTITUDES AND ELEVATIONS IN FEET
DISTANCES IN KILOMETRES