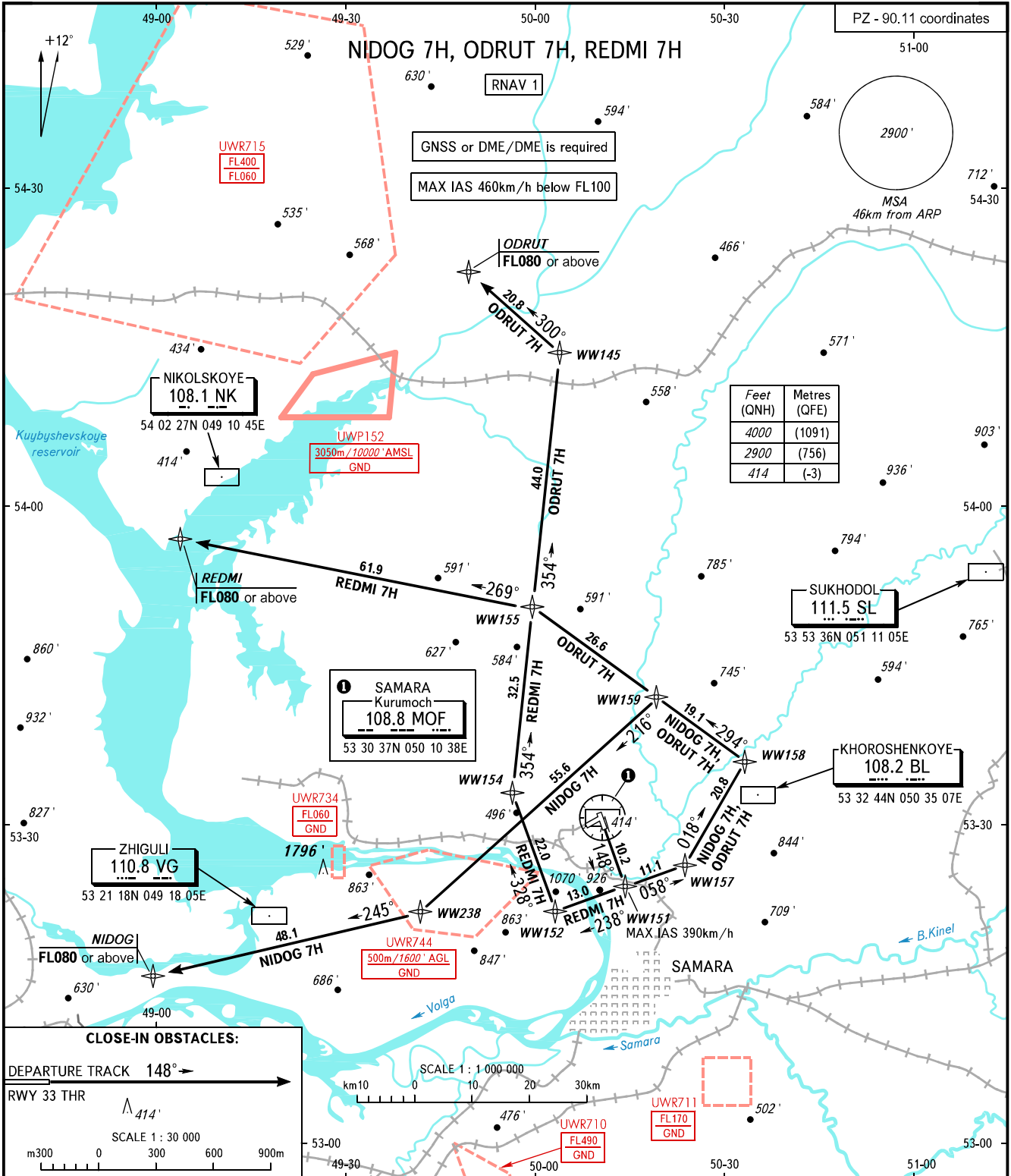


STANDARD DEPARTURE CHART
INSTRUMENT (SID) - ICAO

TRANSITION
ALTITUDE: 4000'

SAMARA, RUSSIA
KURUMOCH
RNAV RWY 15



TOWER	118.200
RADAR	128.000
APPROACH	124.600

BEARINGS AND TRACKS ARE MAGNETIC
ALTITUDES AND ELEVATIONS IN FEET
DISTANCES IN KILOMETRES

CHANGE: New chart