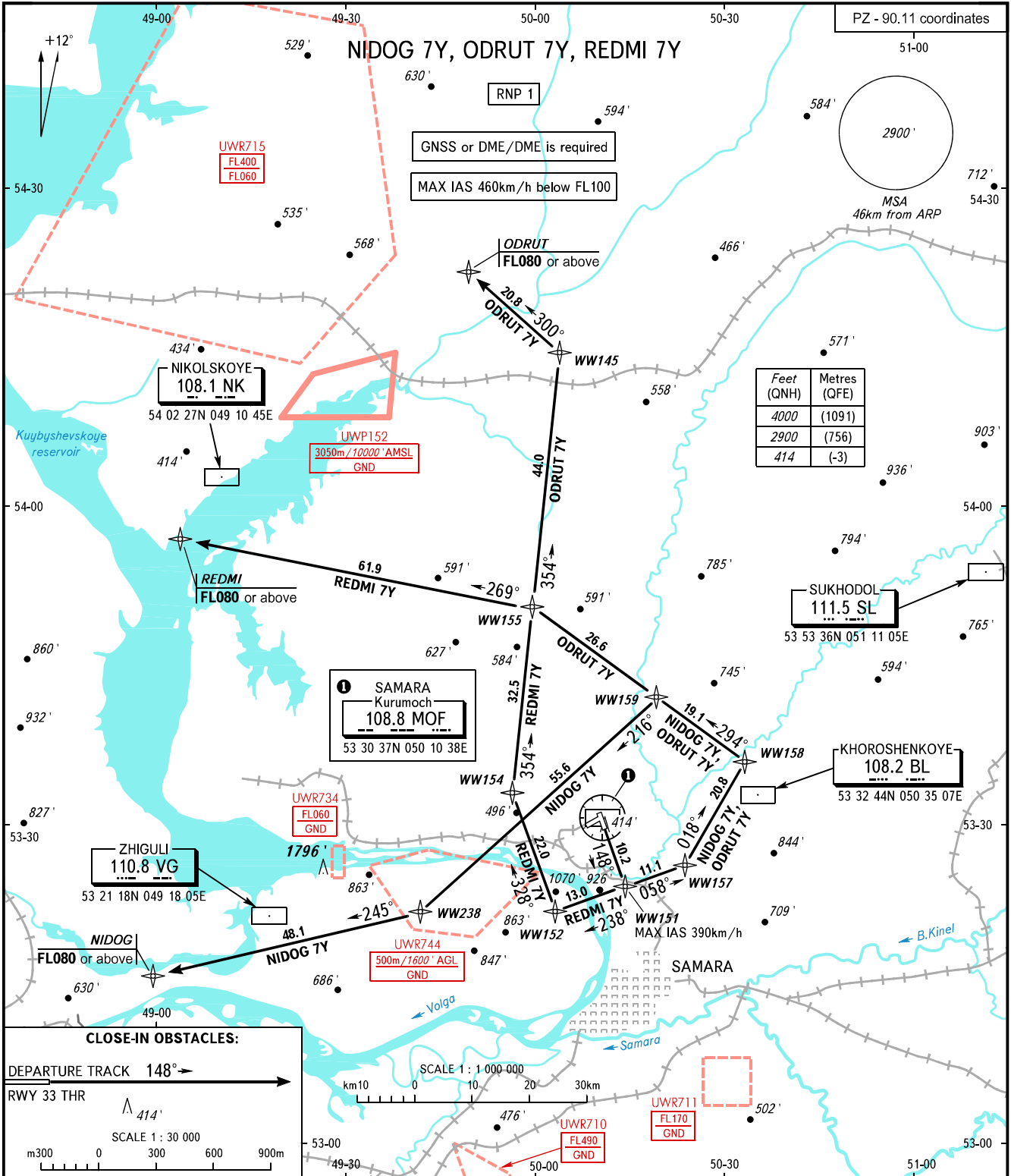


STANDARD DEPARTURE CHART  
INSTRUMENT (SID) - ICAO

TRANSITION  
ALTITUDE: 4000'

SAMARA, RUSSIA  
KURUMOCH  
RNP RWY 15



TOWER	118.200
RADAR	128.000
APPROACH	124.600

BEARINGS AND TRACKS ARE MAGNETIC  
ALTITUDES AND ELEVATIONS IN FEET  
DISTANCES IN KILOMETRES

CHANGE: New chart