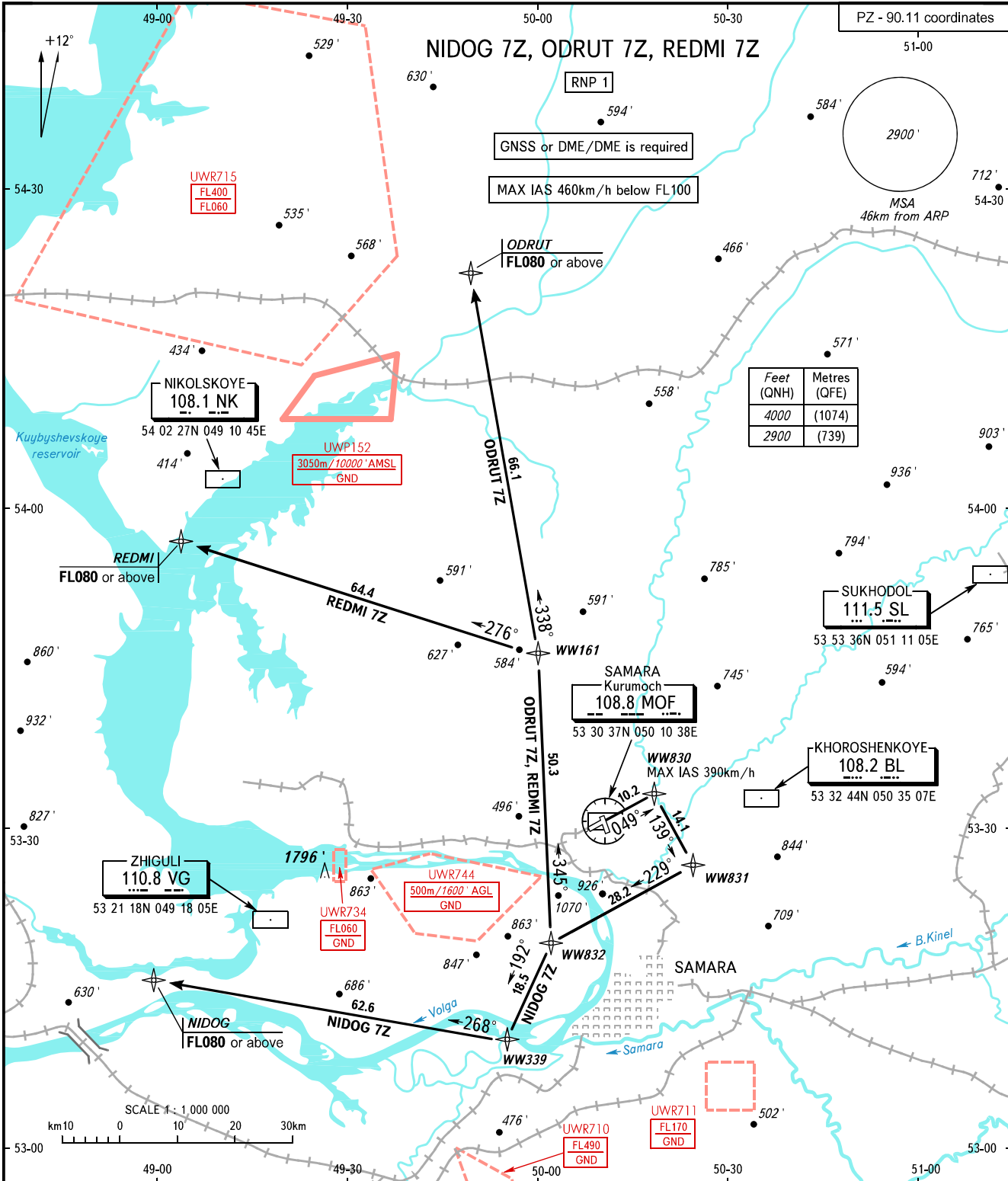


STANDARD DEPARTURE CHART  
INSTRUMENT (SID) - ICAO

TRANSITION  
ALTITUDE: 4000'

SAMARA, RUSSIA  
KURUMOCH  
RNP RWY 05



Feet (QNH)	Metres (QFE)
4000	(1074)
2900	(739)

TOWER 118.200  
RADAR 128.000  
APPROACH 124.600

BEARINGS AND TRACKS ARE MAGNETIC  
ALTITUDES AND ELEVATIONS IN FEET  
DISTANCES IN KILOMETRES

CHANGE: New chart