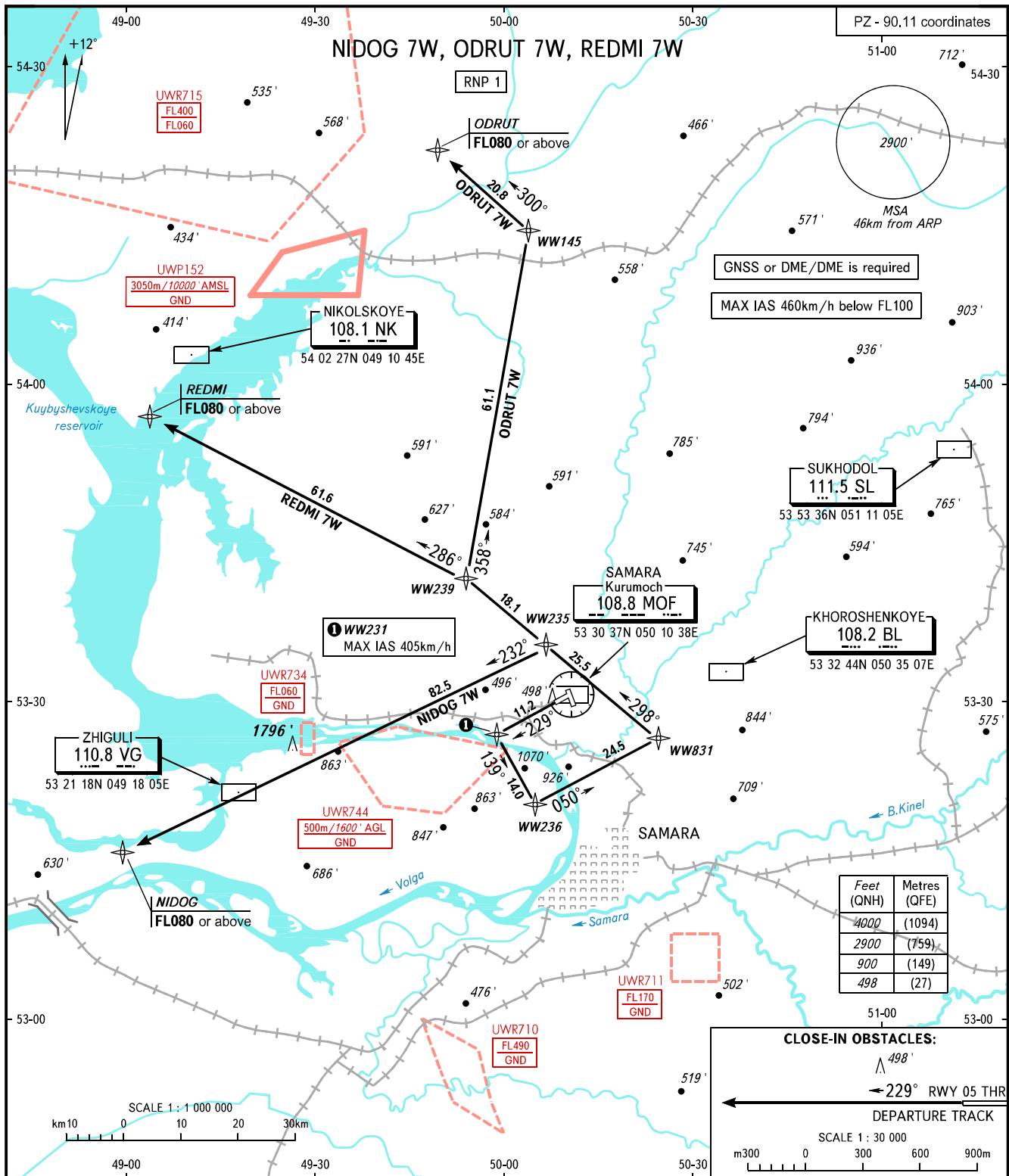


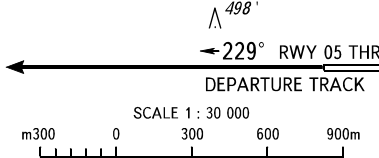
STANDARD DEPARTURE CHART
INSTRUMENT (SID) - ICAO

TRANSITION
ALTITUDE: 4000'

SAMARA, RUSSIA
KURUMOCH
RNP RWY 23



CLOSE-IN OBSTACLES:



TOWER 118.200
RADAR 128.000
APPROACH 124.600

WARNING:
1. There are close-in obstacles.
2. The minimum climb gradient required due to obstacles:
- 3.7% up to 900' for NIDOG 7W, ODRUT 7W, REDMI 7W.

BEARINGS AND TRACKS ARE MAGNETIC
ALTITUDES AND ELEVATIONS IN FEET
DISTANCES IN KILOMETRES