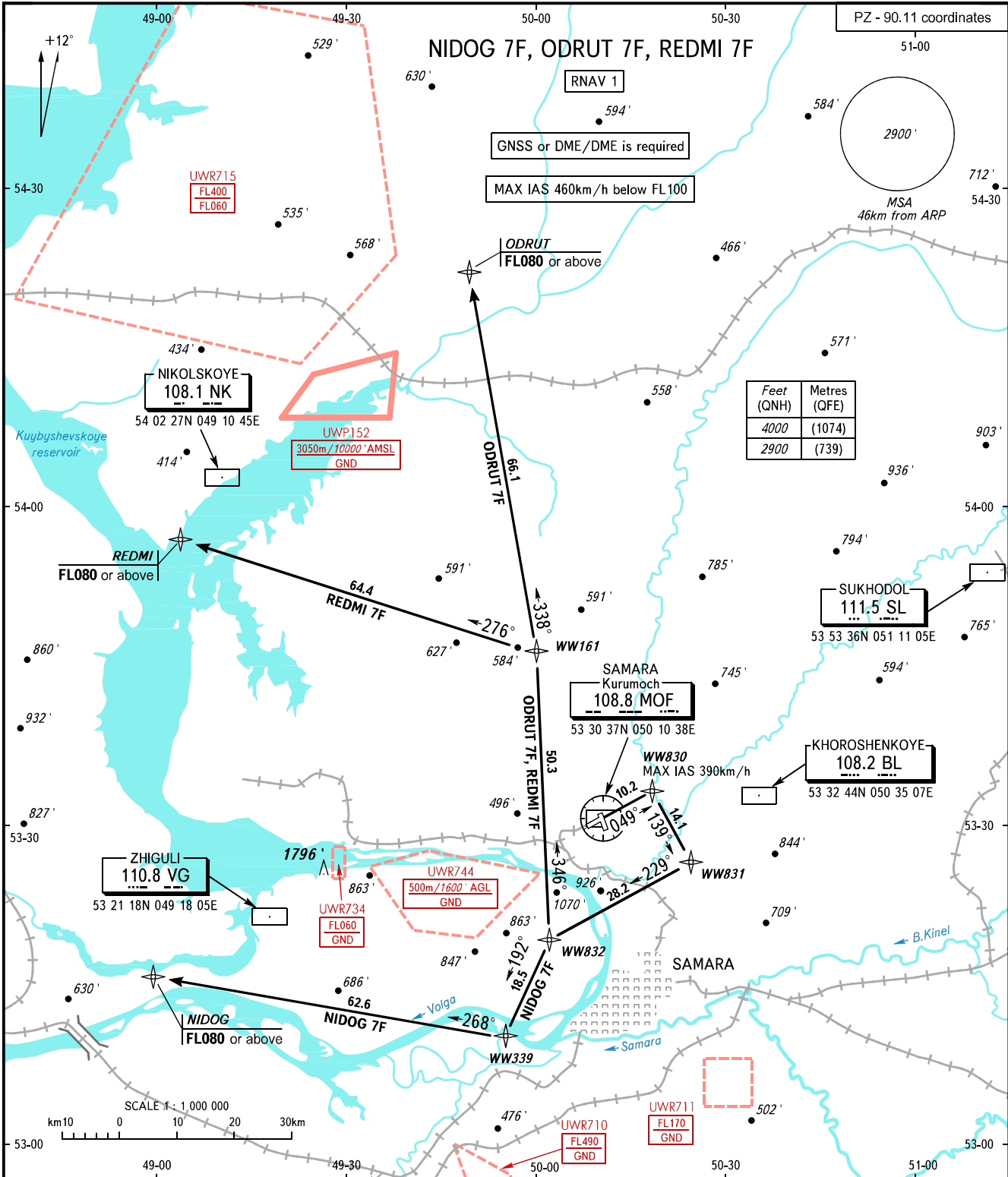


STANDARD DEPARTURE CHART
INSTRUMENT (SID) - ICAO

TRANSITION
ALTITUDE: 4000'

SAMARA, RUSSIA
KURUMOCH
RNAV RWY 05



Feet (QNH)	Metres (QFE)
4000	(1074)
2900	(739)

TOWER 118.200
RADAR 128.000
APPROACH 124.600

BEARINGS AND TRACKS ARE MAGNETIC
ALTITUDES AND ELEVATIONS IN FEET
DISTANCES IN KILOMETRES

CHANGE: New chart