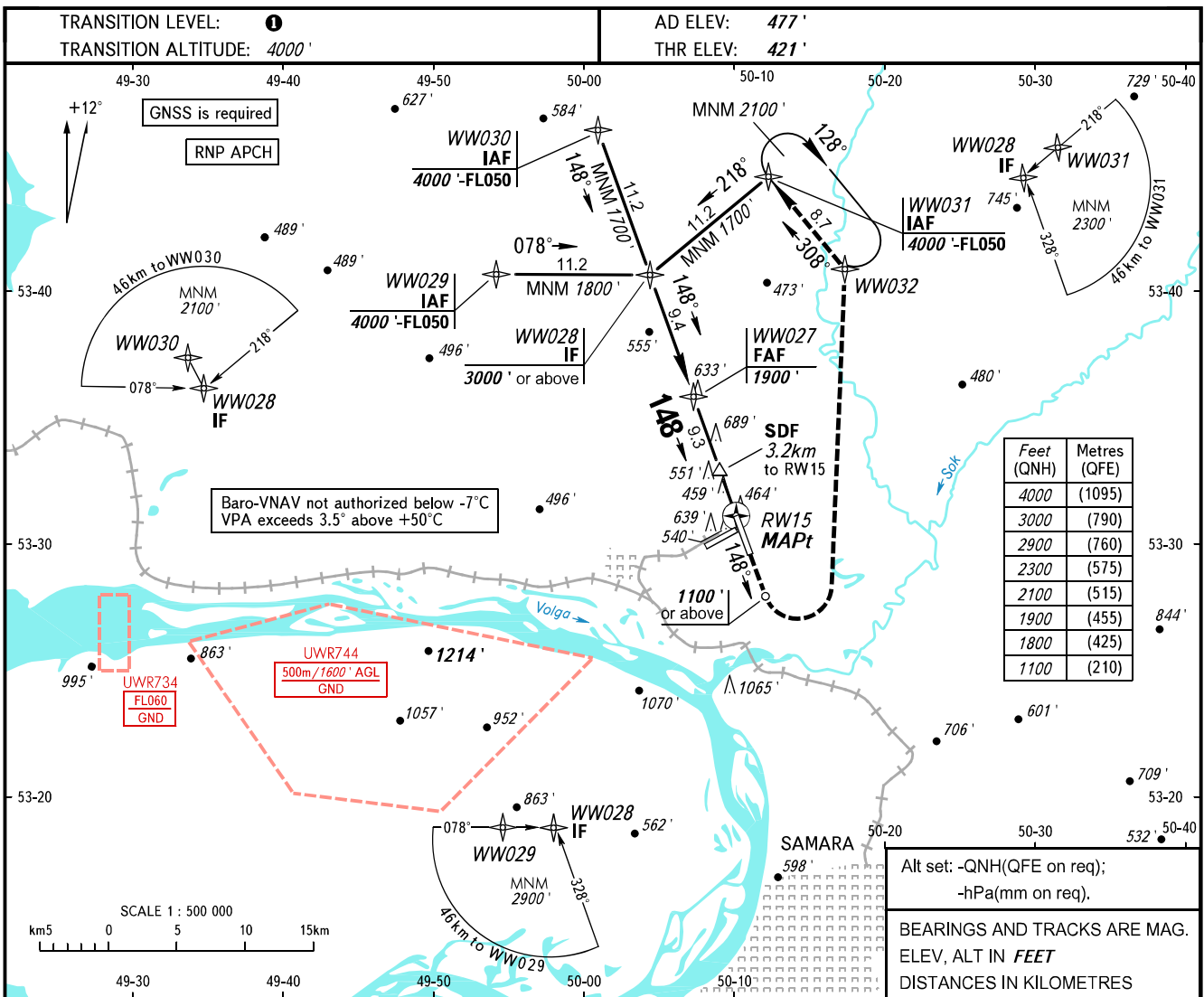


**INSTRUMENT
APPROACH
CHART - ICAO**

RADAR	128.000
TOWER	118.200

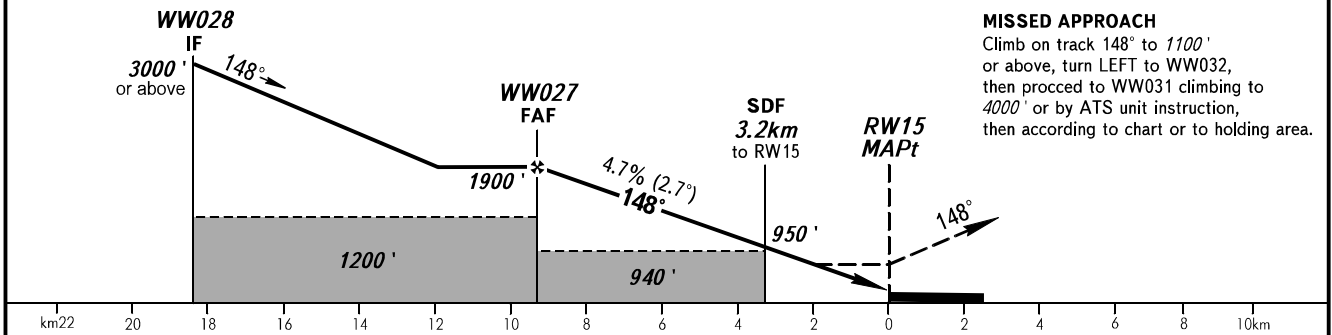
**SAMARA, RUSSIA
KURUMOCH
RNP RWY 15**



Feet (QNH)	Metres (QFE)
4000	(1095)
3000	(790)
2900	(760)
2300	(575)
2100	(515)
1900	(455)
1800	(425)
1100	(210)

Alt set: -QNH(QFE on req);
-hPa(mm on req).
BEARINGS AND TRACKS ARE MAG.
ELEV, ALT IN FEET
DISTANCES IN KILOMETRES

DIST to RW15	9.3	8.0	6.0	4.0
ALTITUDE	1900'	1700'	1400'	1090'



MISSED APPROACH
Climb on track 148° to 1100' or above, turn LEFT to WW032, then proceed to WW031 climbing to 4000' or by ATS unit instruction, then according to chart or to holding area.

OCA(H)		A	B	C	D						
Straight-in Approach	LNAV	790' (370')	790' (370')	790' (370')	790' (370')						
	LNAV/VNAV	589' (168')	601' (180')	609' (188')	625' (204')						
Circling		940' (460')	980' (500')	1090' (610')	1220' (740')						
GROUND SPEED		km/h	150	180	210	240	270	300	330	360	390
RATE OF DESCENT		m/s	2.0	2.4	2.7	3.1	3.5	3.9	4.3	4.7	5.1
		ft/min	385	463	540	617	694	771	848	925	1002

1 TRANSITION LEVEL:
- FL050 when QNH is 1013 hPa (760mm mercury column) or above;
- FL060 when QNH is 977 hPa (733mm mercury column) or above, but less than 1013 hPa (760mm mercury column);
- FL070 when QNH is less than 977 hPa (733mm mercury column).
WARNING
MAPt at RW15. Timing not authorized for defining MAPt.

CHANGE: New chart