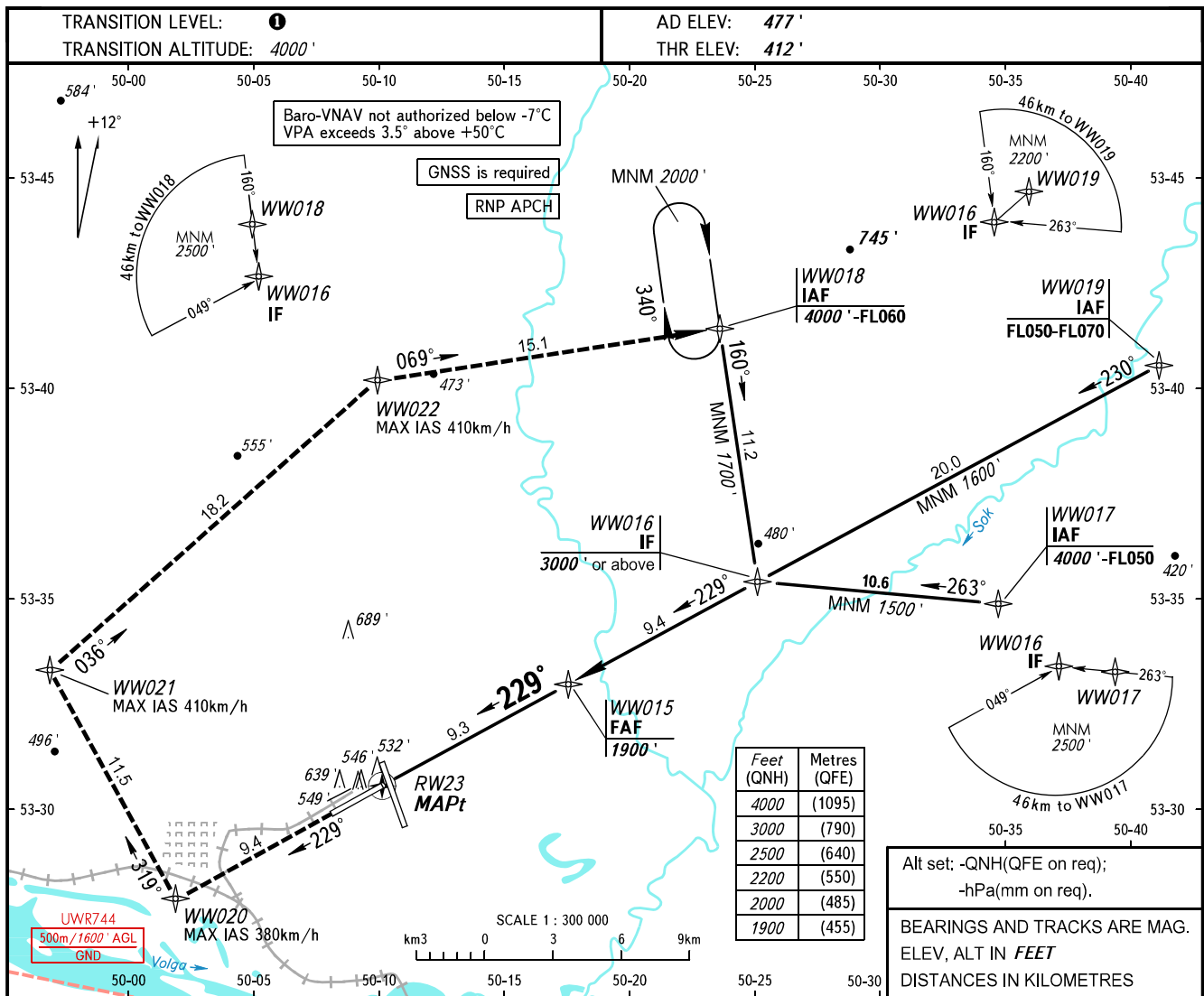


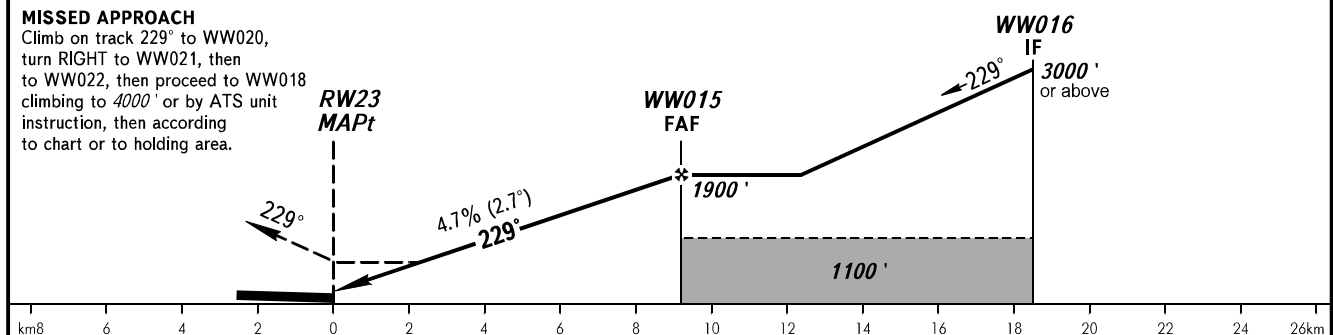
**INSTRUMENT
APPROACH
CHART - ICAO**

**SAMARA, RUSSIA
KURUMOCH
RNP RWY 23**

RADAR	128.000
TOWER	118.200



DIST to RW23	4.0	6.0	8.0	9.4
ALTITUDE	1210'	1390'	1700'	1900'



OCA(H)		A	B	C	D						
Straight-in	LNAV	800' (390')	800' (390')	800' (390')	800' (390')						
	LNAV/VNAV	676' (265')	688' (277')	699' (288')	773' (361')						
Approach											
Circling		940' (460')	980' (500')	1090' (610')	1220' (740')						
GROUND SPEED		km/h	150	180	210	240	270	300	330	360	390
RATE OF DESCENT		m/s	2.0	2.4	2.7	3.1	3.5	3.9	4.3	4.7	5.1
		ft/min	385	463	540	617	694	771	848	925	1002

TRANSITION LEVEL:
- FL050 when QNH is 1013 hPa (760mm mercury column) or above;
- FL060 when QNH is 977 hPa (733mm mercury column) or above, but less than 1013 hPa (760mm mercury column);
- FL070 when QNH is less than 977 hPa (733mm mercury column).

WARNING
MAPt at RW23. Timing not authorized for defining MAPt.