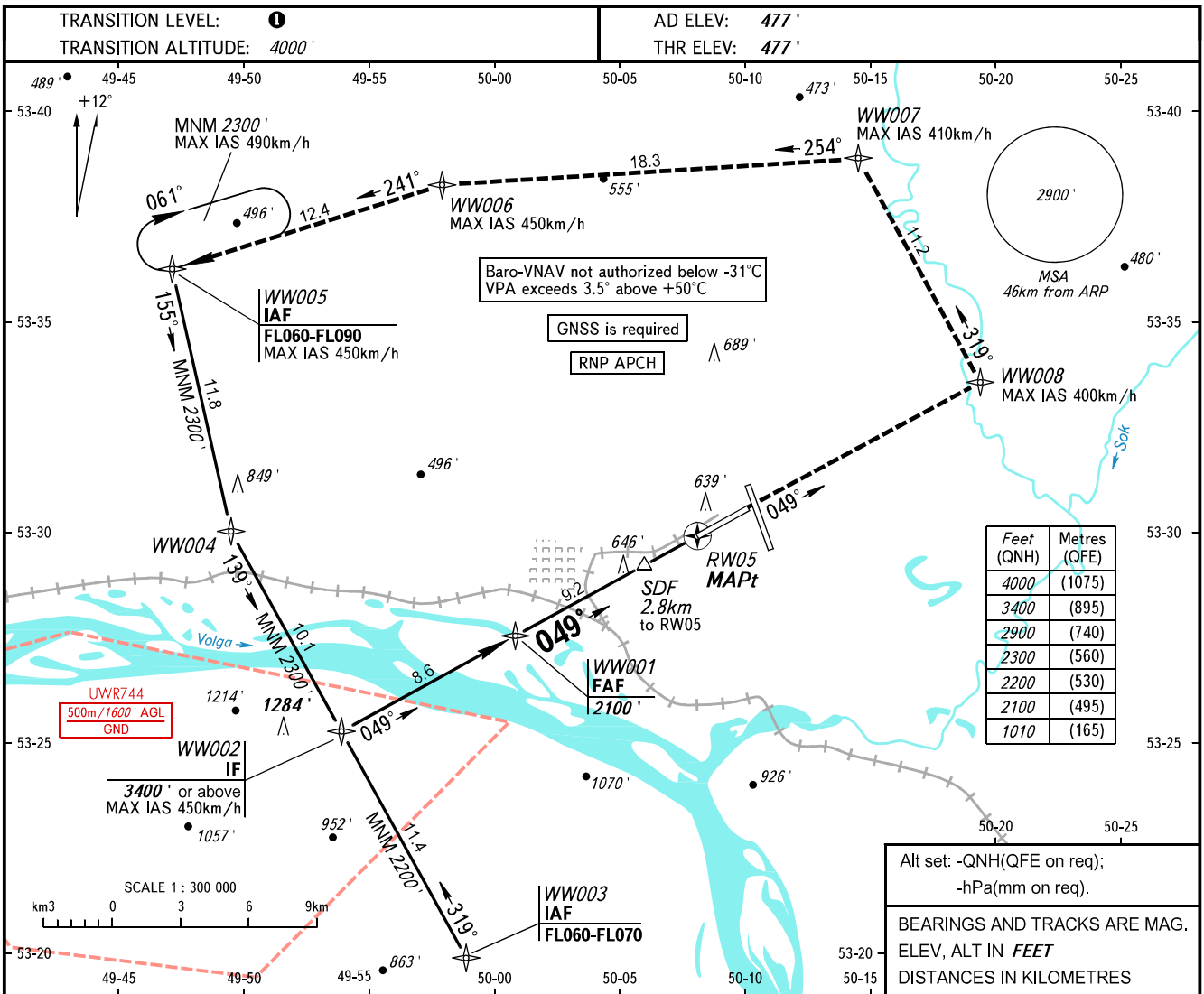


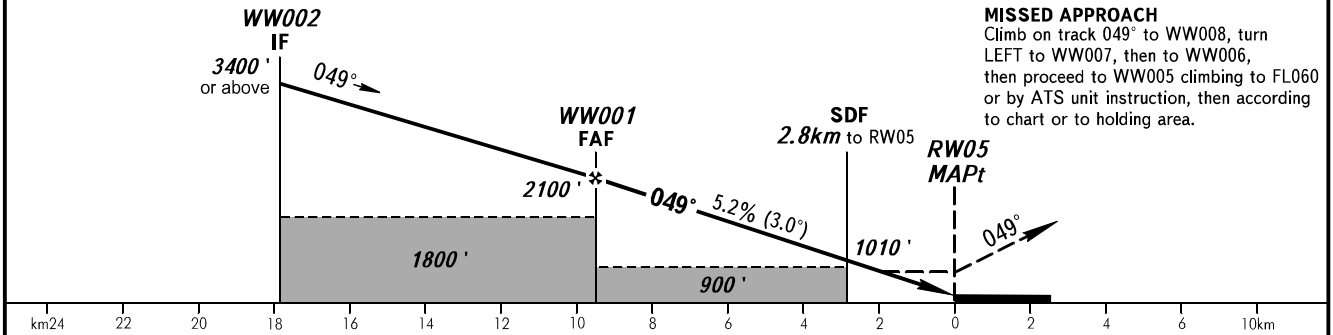
**INSTRUMENT  
APPROACH  
CHART - ICAO**

RADAR	128.000
TOWER	118.200

**SAMARA, RUSSIA  
KURUMOCH  
RNP RWY 05**



DIST to RW05	9.2	8.0	6.0	4.0
ALTITUDE	2100'	1890'	1550'	1080'



**MISSED APPROACH**  
Climb on track 049° to WW008, turn LEFT to WW007, then to WW006, then proceed to WW005 climbing to FL060 or by ATS unit instruction, then according to chart or to holding area.

OCA(H)		A	B	C	D
Straight-in	LNAV	870' (390')	870' (390')	870' (390')	870' (390')
	LNAV/VNAV	771' (294')	782' (305')	790' (313')	800' (323')
Approach					
Circling		940' (460')	980' (500')	1090' (610')	1220' (740')

**1** TRANSITION LEVEL:  
- FL050 when QNH is 1013 hPa (760mm mercury column) or above;  
- FL060 when QNH is 977 hPa (733mm mercury column) or above, but less than 1013 hPa (760mm mercury column);  
- FL070 when QNH is less than 977 hPa (733mm mercury column).

**WARNING**  
MAPt at RW05. Timing not authorized for defining MAPt.

GROUND SPEED	km/h	150	180	210	240	270	300	330	360	390
RATE OF DESCENT	m/s	2.2	2.6	3.0	3.5	3.9	4.3	4.8	5.2	5.6
	ft/min	427	512	597	682	768	853	938	1024	1109

CHANGE: New chart