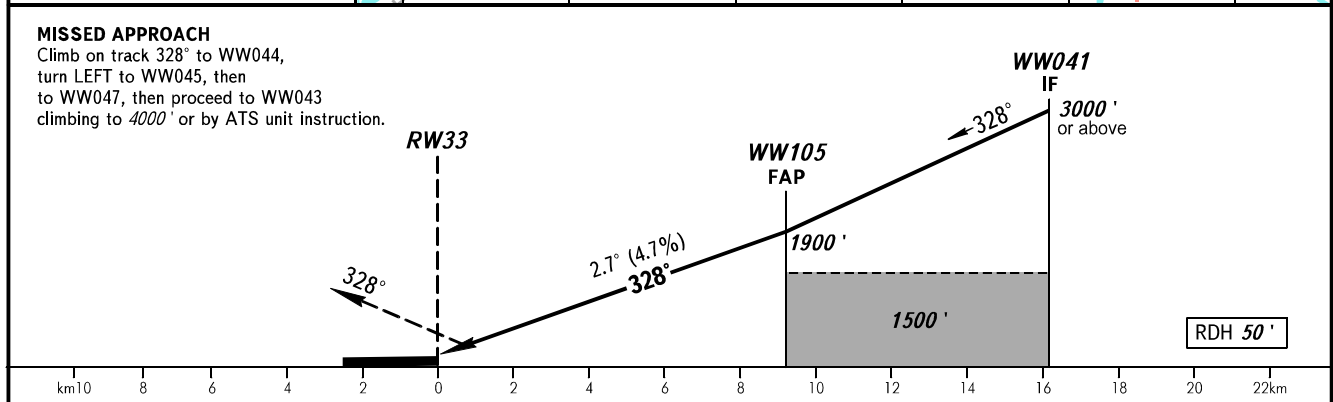
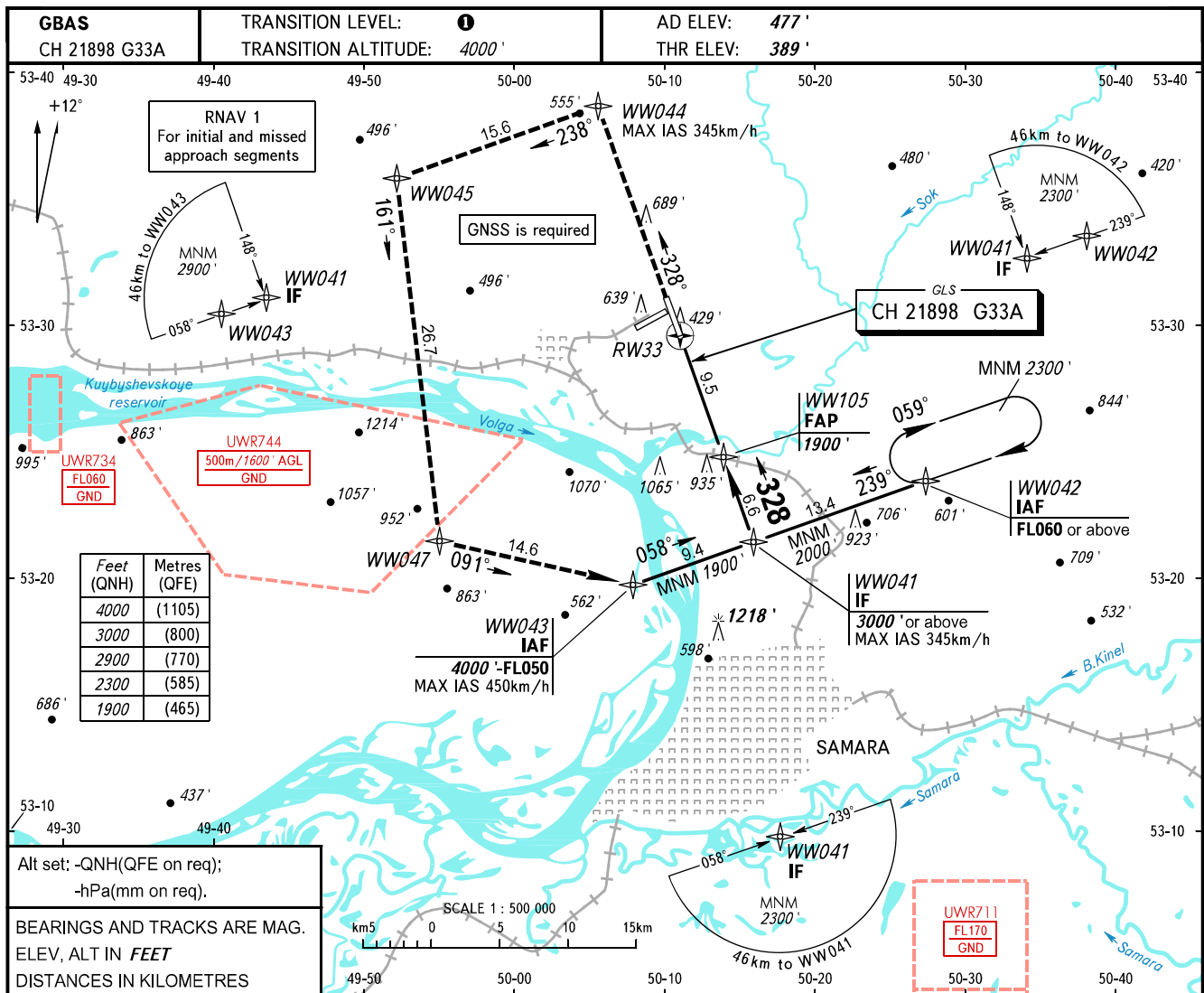


**INSTRUMENT  
APPROACH  
CHART - ICAO**

**SAMARA, RUSSIA  
KURUMOCH  
GLS RWY 33**

RADAR	128.000
TOWER	118.200



OCA(H)		A	B	C	D	DL					
Straight-in	CAT I	553' (164')	565' (176')	574' (185')	585' (196')	585' (196')					
	Approach										
Circling		940' (460')	980' (500')	1090' (610')	1220' (740')	1220' (740')					
GROUND SPEED		km/h	150	180	210	240	270	300	330	360	390
RATE OF DESCENT		m/s	2.0	2.4	2.7	3.1	3.5	3.9	4.3	4.7	5.1
		ft/min	385	463	540	617	694	771	848	925	1002

**TRANSITION LEVEL:**  
 - FL050 when QNH is 1013 hPa (760mm mercury column) or above;  
 - FL060 when QNH is 977 hPa (733mm mercury column) or above, but less than 1013 hPa (760mm mercury column);  
 - FL070 when QNH is less than 977 hPa (733mm mercury column).