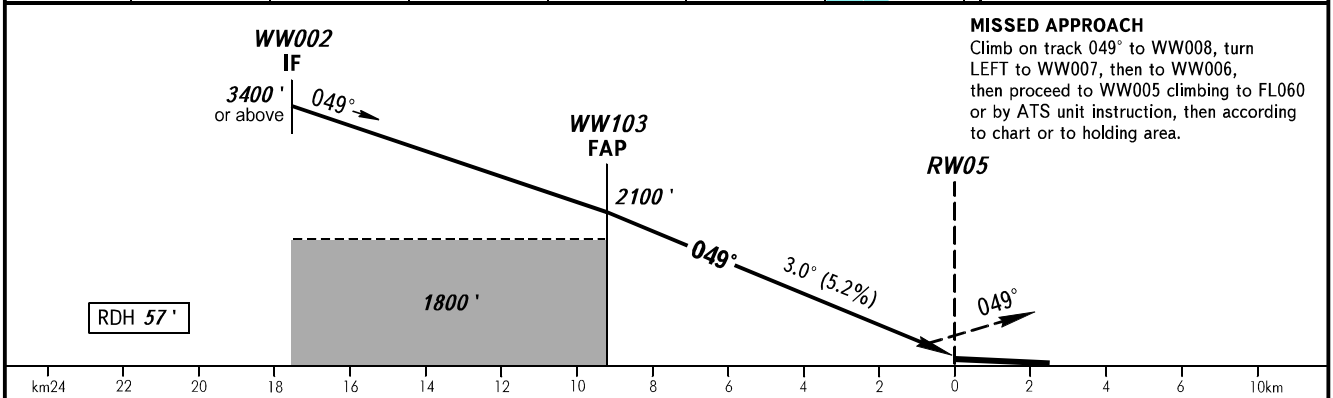
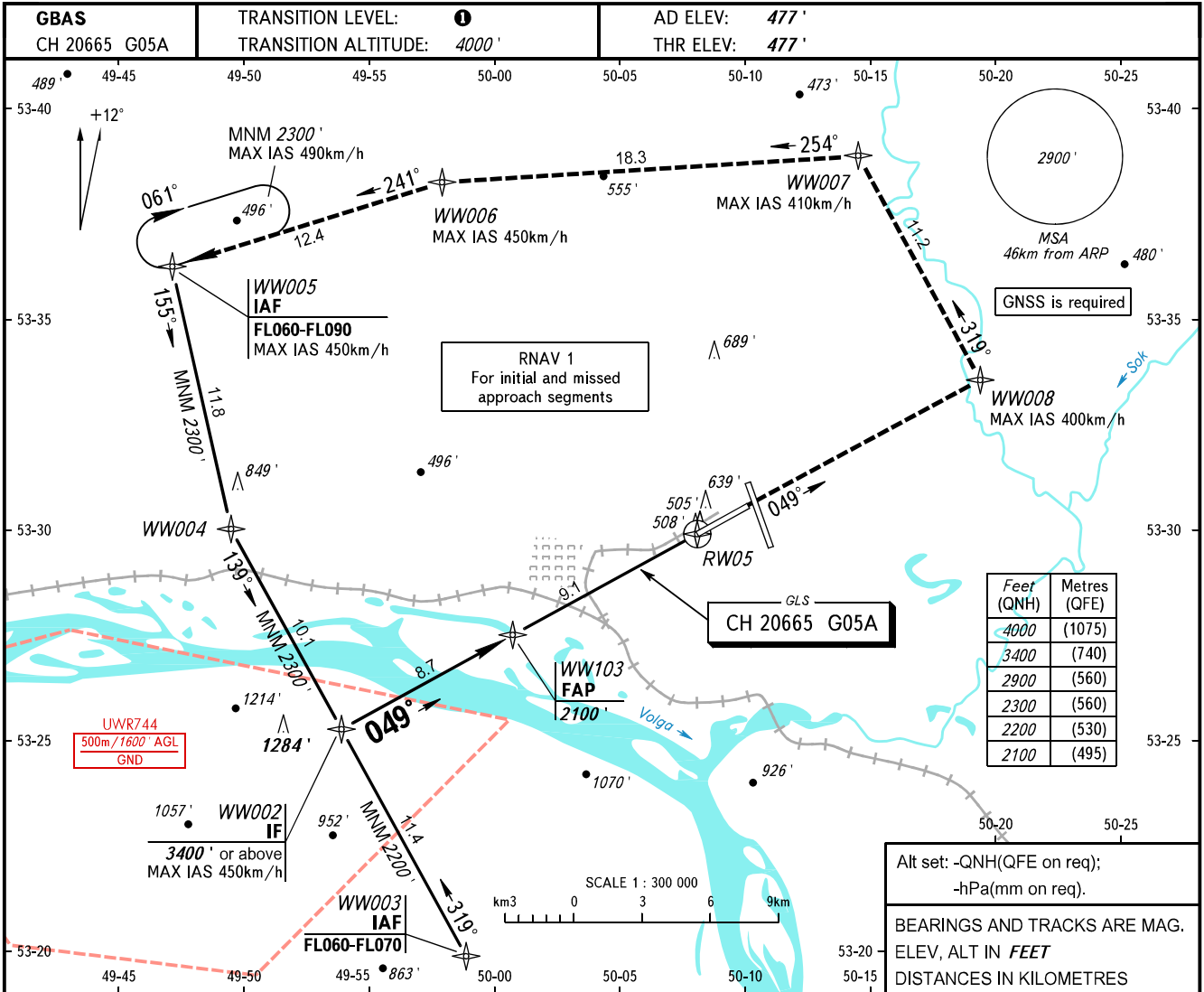


**INSTRUMENT
APPROACH
CHART - ICAO**

RADAR	128.000
TOWER	118.200

**SAMARA, RUSSIA
KURUMOCH
GLS RWY 05**



MISSED APPROACH
Climb on track 049° to WW008, turn LEFT to WW007, then to WW006, then proceed to WW005 climbing to FL060 or by ATS unit instruction, then according to chart or to holding area.

OCA(H)		A	B	C	D	DL
Straight-in Approach	CAT I	635' (158')	647' (170')	658' (181')	669' (192')	669' (192')
Circling		940' (460')	980' (500')	1090' (610')	1220' (740')	1220' (740')

① TRANSITION LEVEL:
- FL050 when QNH is 1013 hPa (760mm mercury column) or above;
- FL060 when QNH is 977 hPa (733mm mercury column) or above, but less than 1013 hPa (760mm mercury column);
- FL070 when QNH is less than 977 hPa (733mm mercury column).

GROUND SPEED	km/h	150	180	210	240	270	300	330	360	390
	RATE OF DESCENT	m/s	2.2	2.6	3.0	3.5	3.9	4.3	4.8	5.2
	ft/min	427	512	597	682	768	853	938	1024	1109

CHANGE: NIL