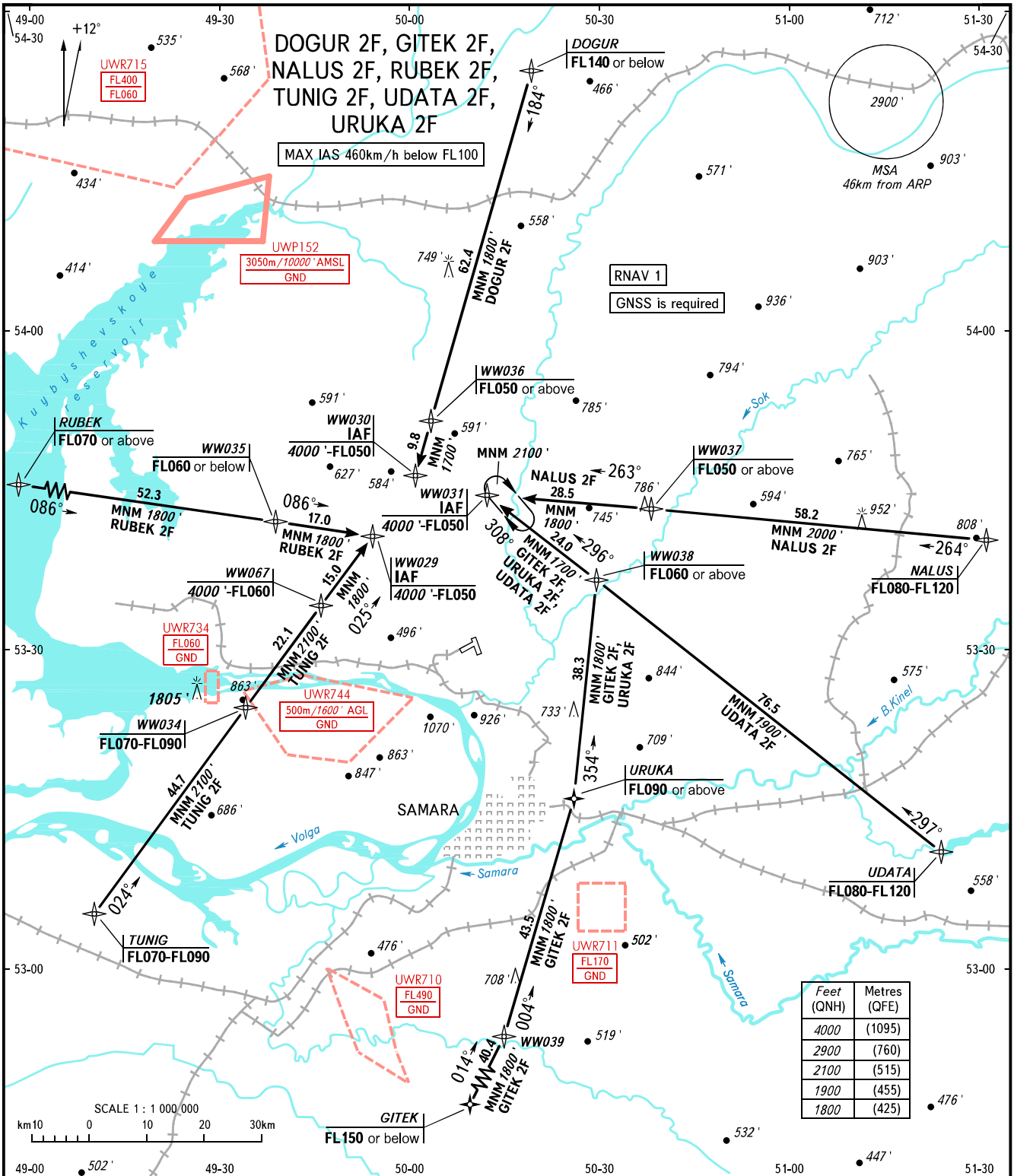


STANDARD ARRIVAL CHART
INSTRUMENT (STAR) - ICAO

SAMARA, RUSSIA
KURUMOCH
RNAV RWY 15

TRANSITION
LEVEL: **1**



Feet (QNH)	Metres (QFE)
4000	(1095)
2900	(760)
2100	(515)
1900	(455)
1800	(425)

APPROACH 124.600
RADAR 128.000
TOWER 118.200

1 TRANSITION LEVEL:
- FL050 when QNH is 1013 hPa (760mm mercury column) or above;
- FL060 when QNH is 977 hPa (733mm mercury column) or above, but less than 1013 hPa (760mm mercury column);
- FL070 when QNH is less than 977 hPa (733mm mercury column).

BEARINGS AND TRACKS ARE MAGNETIC
ALTITUDES AND ELEVATIONS IN FEET
DISTANCES IN KILOMETRES

CHANGE: New chart