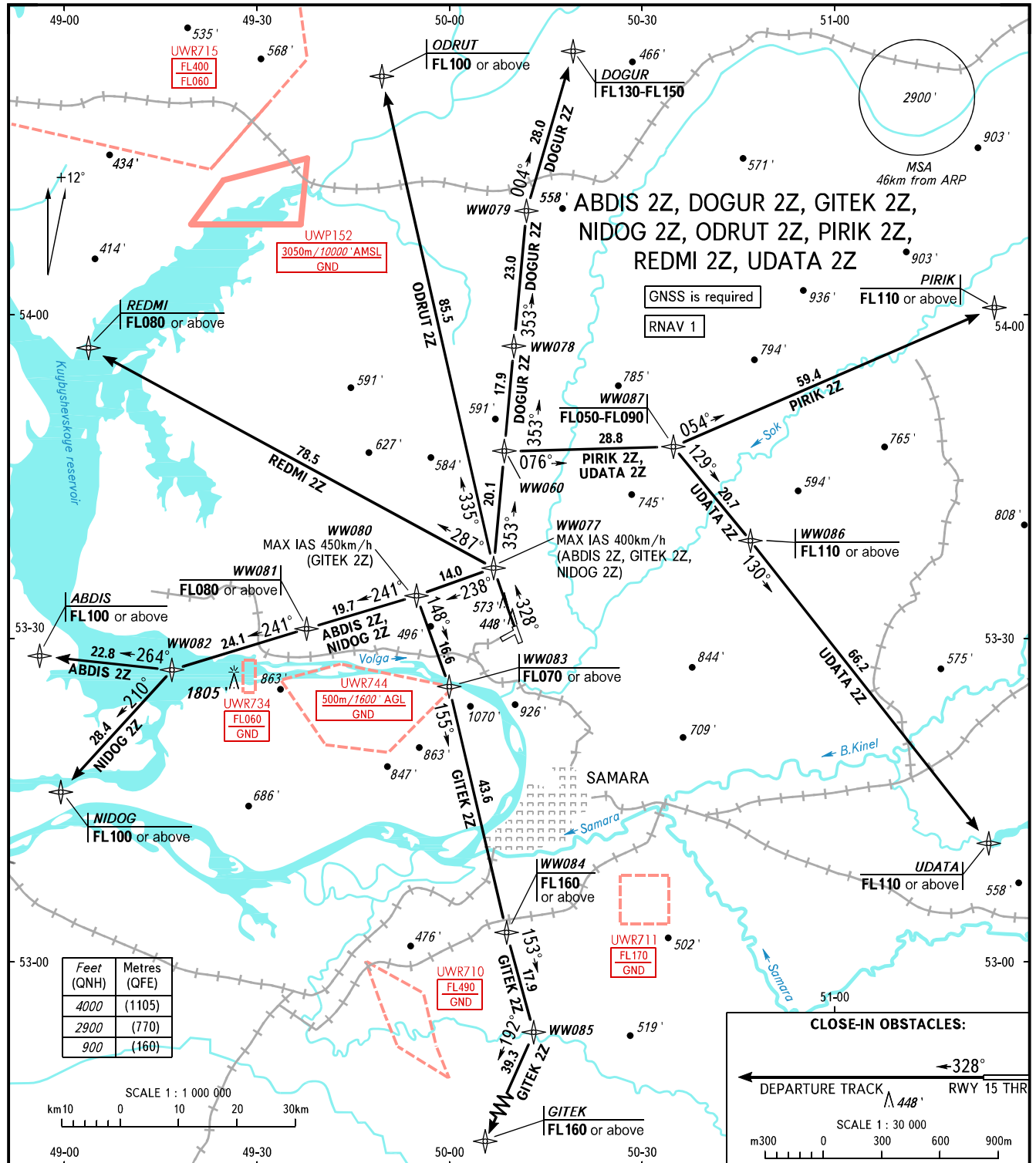


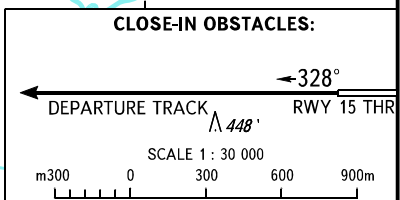
STANDARD DEPARTURE CHART
INSTRUMENT (SID) - ICAO

TRANSITION
ALTITUDE: 4000'

SAMARA, RUSSIA
KURUMOCH
RNAV RWY 33



Feet (QNH)	Metres (QFE)
4000	(1105)
2900	(770)
900	(160)



TOWER 118.200
RADAR 128.000
APPROACH 124.600

- WARNING:**
- There are close-in obstacles.
 - MNM climb gradient:
 - 5.5% up to 900' due to obstacles, then 5.5% up to FL080 due to the airspace structure for ABDIS 2Z;
 - 3.7% up to FL050 DOGUR 2Z;
 - 5.5% up to 900' due to obstacles, then 5.5% up to FL070 due to the airspace structure for GITEK 2Z;
 - 5.5% up to 900' due to obstacles, then 5.5% up to FL080 due to the airspace structure for NIDOG 2Z;
 - 3.7% up to FL050 for ODRUT 2Z;
 - 4.2% up to FL110 for UDATA 2Z.

BEARINGS AND TRACKS ARE MAGNETIC
ALTITUDES AND ELEVATIONS IN FEET
DISTANCES IN KILOMETRES