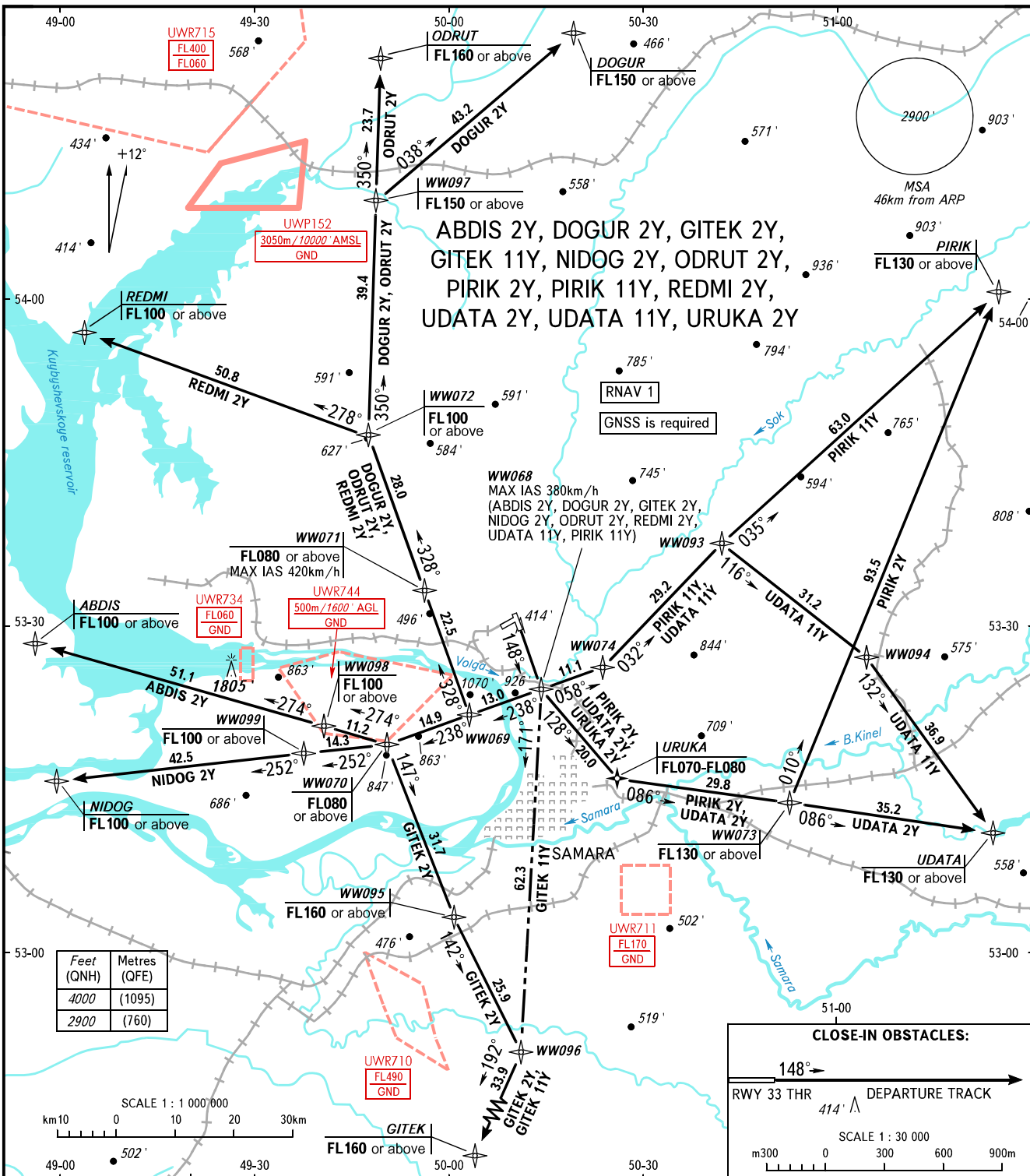


STANDARD DEPARTURE CHART
INSTRUMENT (SID) - ICAO

TRANSITION
ALTITUDE: 4000'

SAMARA, RUSSIA
KURUMOCH
RNAV RWY 15



TOWER 118.200
RADAR 128.000
APPROACH 124.600

WARNING:

- There are close-in obstacles.
- MNM climb gradient due to the airspace structure:
 - 6.3% up to FL080 for ABDIS 2Y;
 - 5.5% up to FL080 for DOGUR 2Y;
 - 6.3% up to FL080 for GITEK 2Y;
 - 4.5% up to FL160 for GITEK 11Y;
 - 6.3% up to FL080 for NIDOG 2Y;
 - 5.5% up to FL080 for ODRUT 2Y;
 - 7.7% up to FL080 for PIRIK 2Y;
 - 3.5% up to FL130 for PIRIK 11Y;
 - 5.5% up to FL080 for REDMI 2Y;
 - 7.7% up to FL080 for UDATA 2Y;
 - 3.4% up to FL130 for UDATA 11Y;
 - 7.7% up to FL080 for URUKA 2Y.

BEARINGS AND TRACKS ARE MAGNETIC
ALTITUDES AND ELEVATIONS IN FEET
DISTANCES IN KILOMETRES