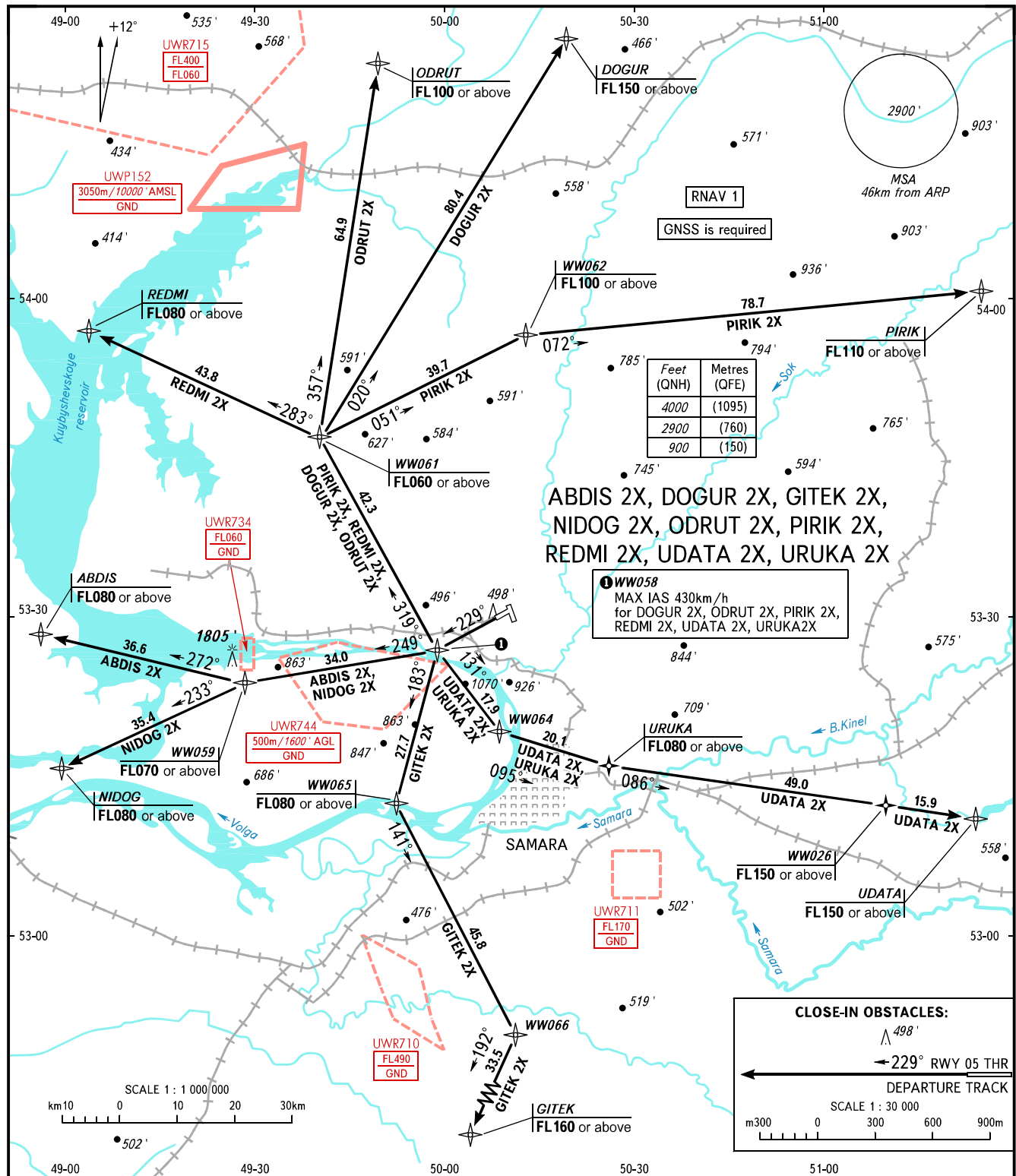


STANDARD DEPARTURE CHART
INSTRUMENT (SID) - ICAO

TRANSITION
ALTITUDE: 4000'

SAMARA, RUSSIA
KURUMOCH
RNAV RWY 23



TOWER 118.200
RADAR 128.000
APPROACH 124.600

WARNING: 1. There are close-in obstacles.
2. MNM climb gradients:
- 4.7% up to FL070 for ABDIS 2X;
- 3.7% up to 900' due to obstacles for DOGUR 2X;
- 7.5% up to FL080 for GITEK 2X;
- 4.7% up to FL070 for NIDOG 2X;
- 3.7% up to 900' due to obstacles for ODRUT 2X;
- 3.7% up to 900' due to obstacles PIRIK 2X;
- 3.7% up to 900' due to obstacles for REDMI 2X;
- 7.4% up to 900' due to obstacles, then 7.4% up to FL080 due to the airspace structure for UDATA 2X;
- 7.4% up to 900' due to obstacles, then 7.4% up to FL080 due to the airspace structure for URUKA 2X.

BEARINGS AND TRACKS ARE MAGNETIC
ALTITUDES AND ELEVATIONS IN FEET
DISTANCES IN KILOMETRES

CHANGE: WW058