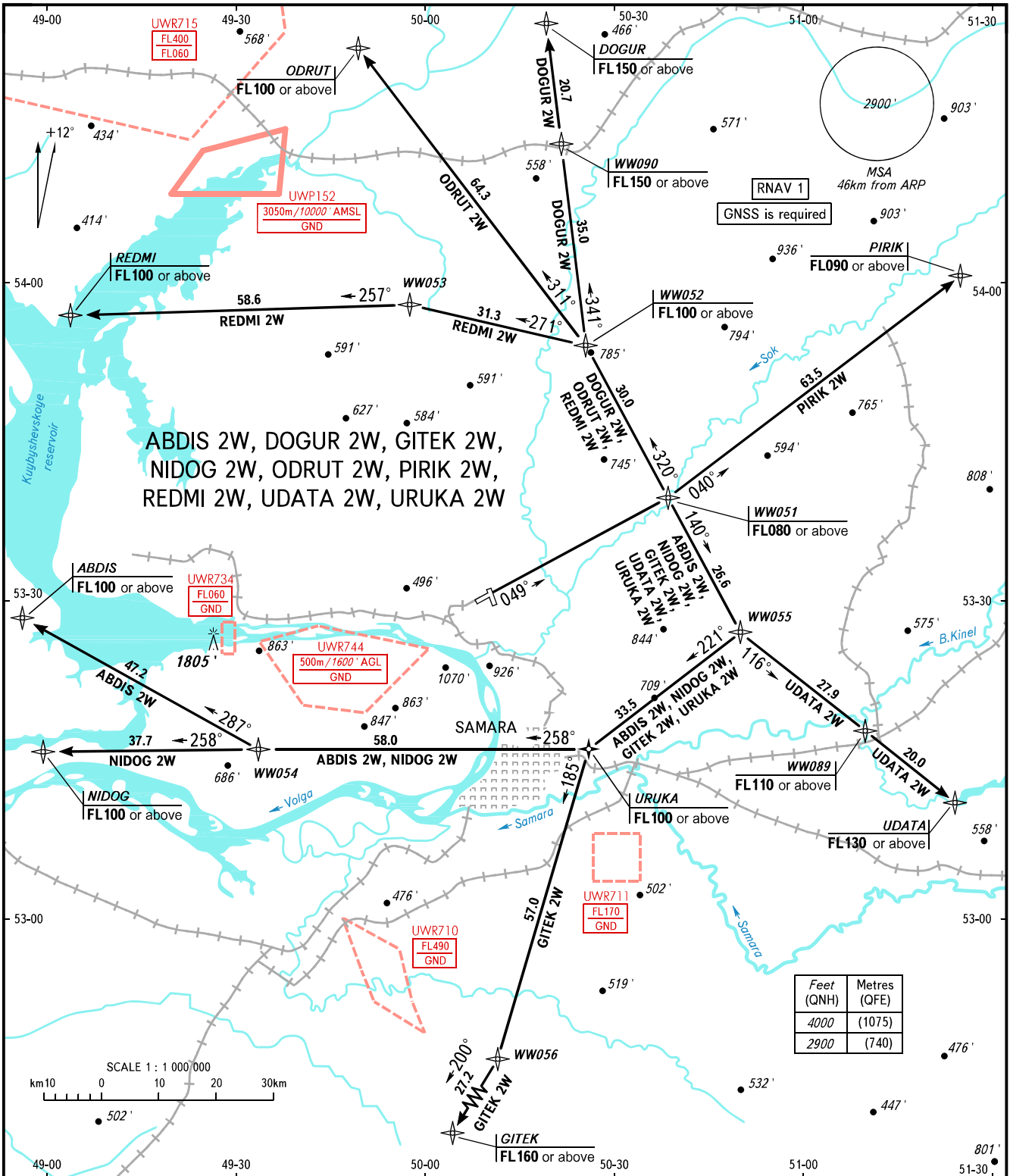


STANDARD DEPARTURE CHART  
INSTRUMENT (SID) - ICAO

TRANSITION  
ALTITUDE: 4000'

SAMARA, RUSSIA  
KURUMOCH  
RNAV RWY 05



TOWER 118.200  
RADAR 128.000  
APPROACH 124.600

**WARNING**

MNM climb gradient due to the airspace structure for all SIDs - 6.6% up to FL080.

BEARINGS AND TRACKS ARE MAGNETIC  
ALTITUDES AND ELEVATIONS IN FEET  
DISTANCES IN KILOMETRES