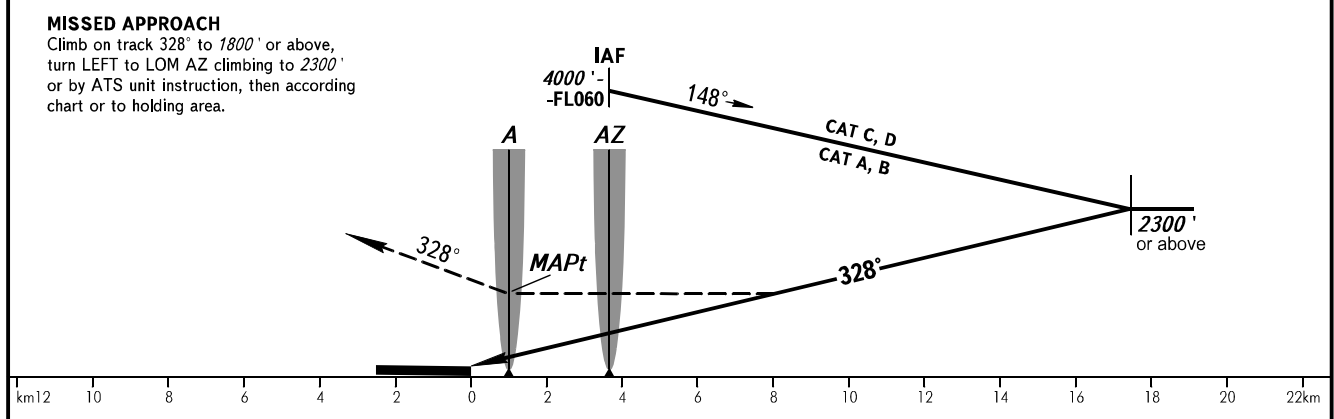
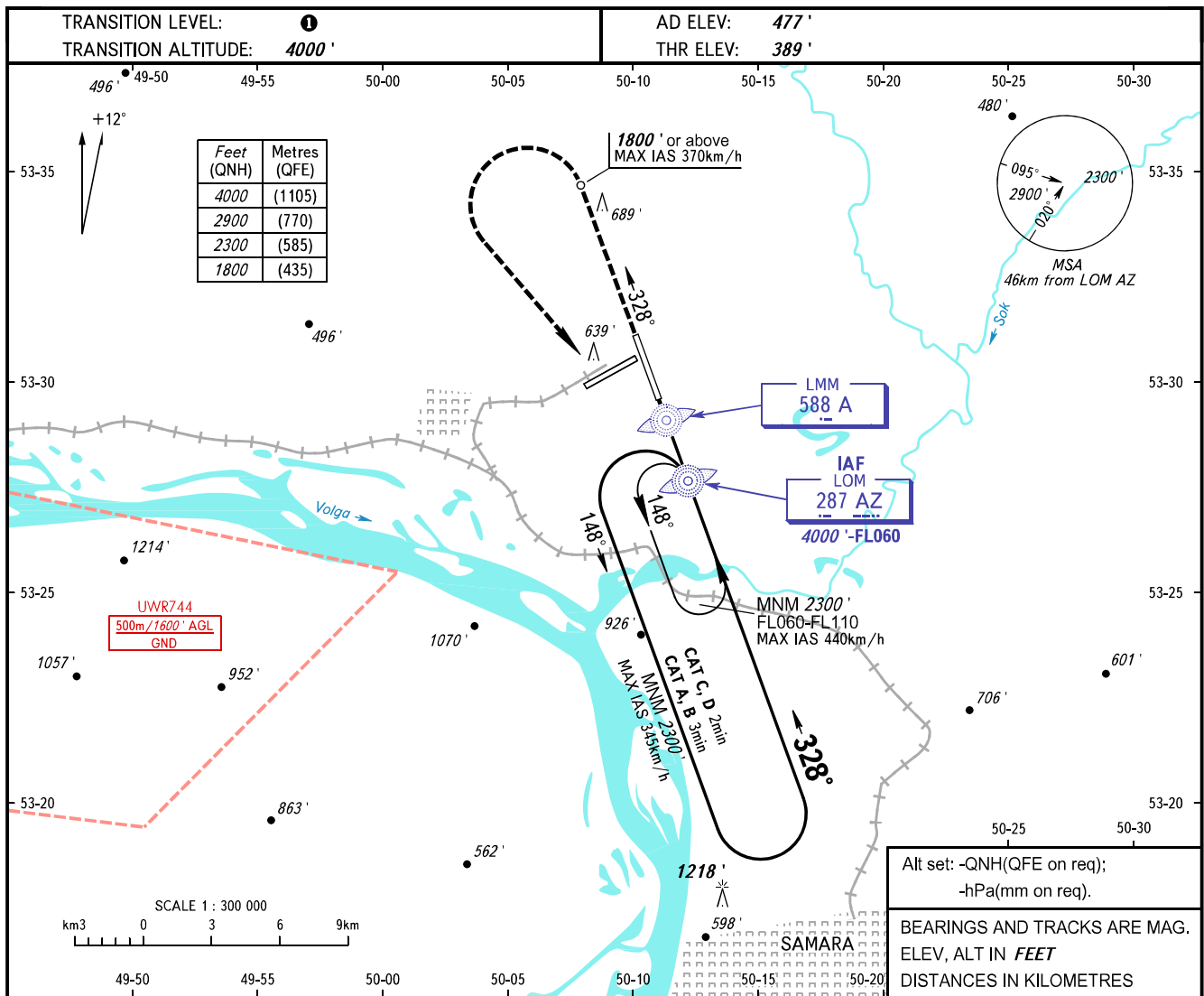


**INSTRUMENT
APPROACH
CHART - ICAO**

RADAR	128.000
TOWER	118.200

SAMARA, RUSSIA
KURUMOCH
NDB D RWY 33



OCA(H)	A	B	C	D
Straight-in				
Approach				
Circling	1330' (940')	1330' (940')	1330' (940')	1330' (940')

1 TRANSITION LEVEL:
- FL050 when QNH is 1013 hPa (760mm mercury column) or above;
- FL060 when QNH is 977 hPa (733mm mercury column) or above, but less than 1013 hPa (760mm mercury column);
- FL070 when QNH is less than 977 hPa (733mm mercury column).

WARNING:
1. Turn before MAPt is PROHIBITED.
2. MAPt at LMM. Timing not authorized for defining MAPt.

CHANGE: New chart