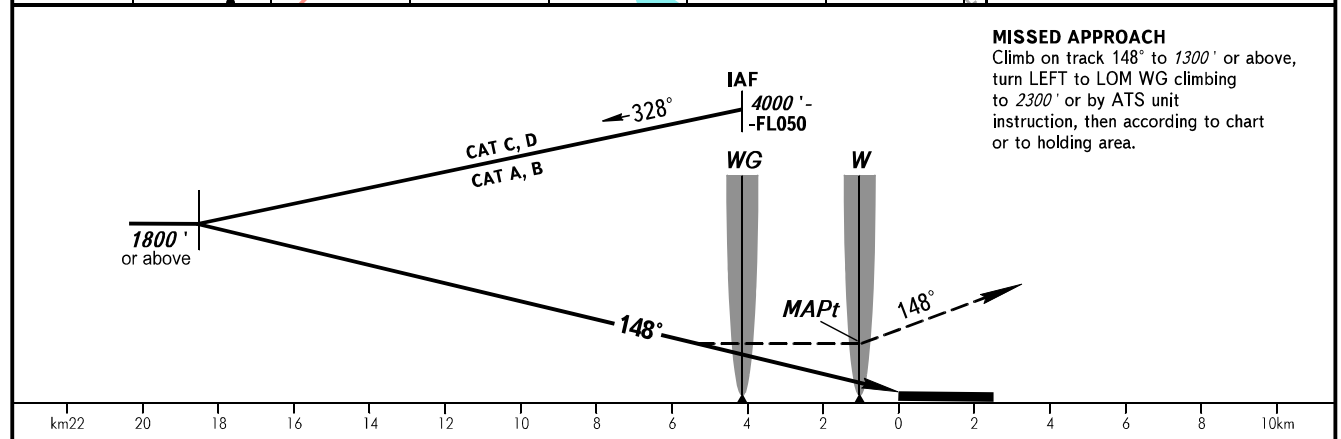
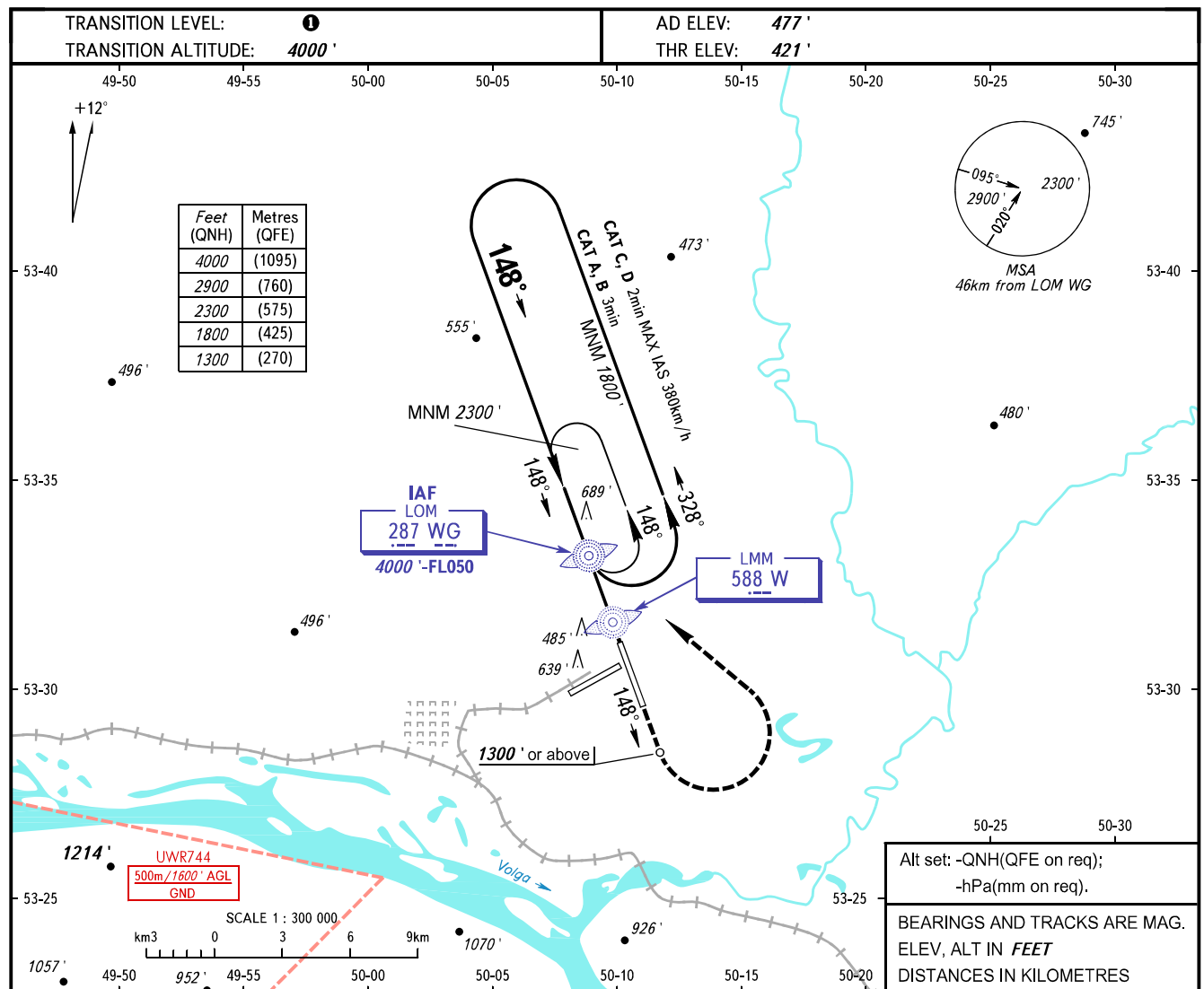


**INSTRUMENT  
APPROACH  
CHART - ICAO**

RADAR	128.000
TOWER	118.200

**SAMARA, RUSSIA**  
KURUMOCH  
NDB C RWY 15



OCA(H)	A	B	C	D
Straight-in Approach				
Circling	1030' (610')	1030' (610')	1090' (610')	1220' (740')

- 1** TRANSITION LEVEL:  
- FL050 when QNH is 1013 hPa (760mm mercury column) or above;  
- FL060 when QNH is 977 hPa (733mm mercury column) or above, but less than 1013 hPa (760mm mercury column);  
- FL070 when QNH is less than 977 hPa (733mm mercury column).
- WARNING:**  
1. Turn before MAPt is PROHIBITED.  
2. MAPt at LMM. Timing not authorized for defining MAPt.

CHANGE: New chart