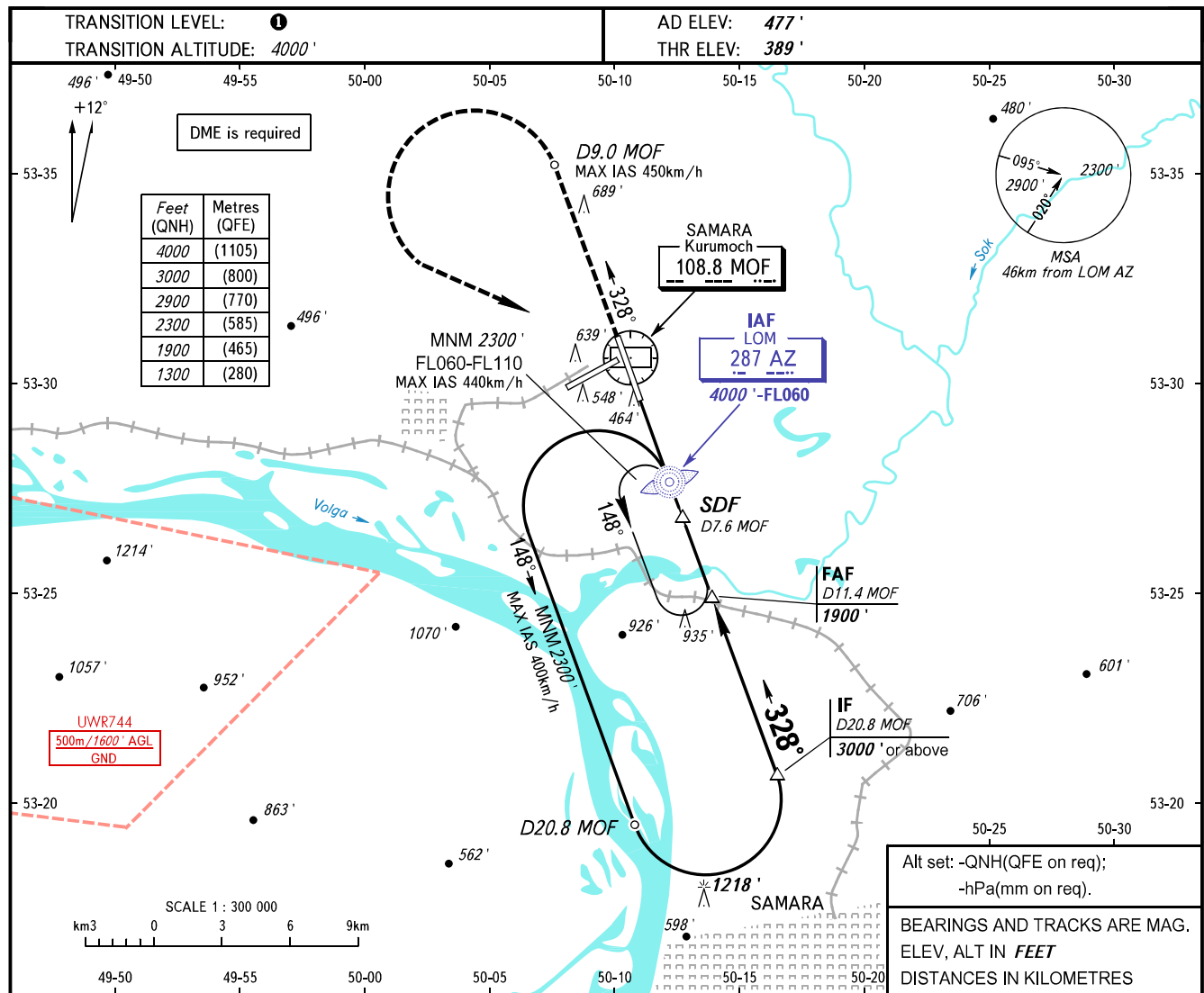


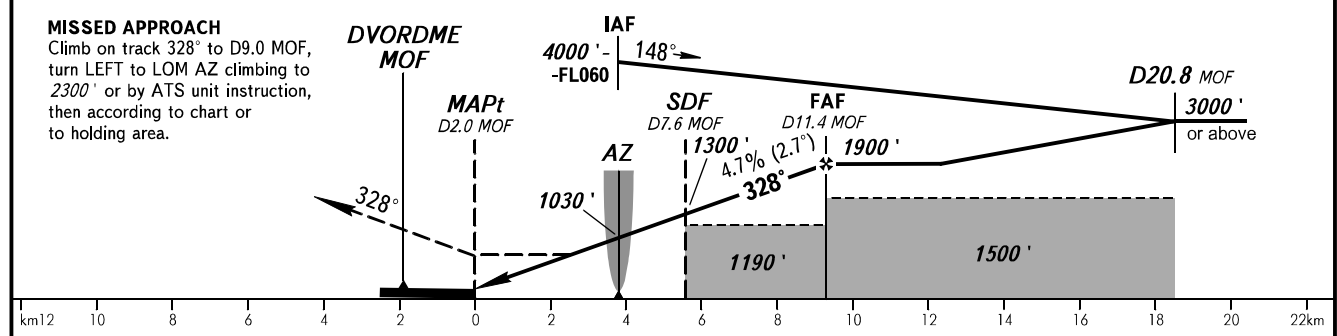
**INSTRUMENT
APPROACH
CHART - ICAO**

**SAMARA, RUSSIA
KURUMOCH
NDB Z RWY 33**

RADAR	128.000
TOWER	118.200



DME MOF	6.0	8.0	10.0	11.4
ALTITUDE	1070'	1370'	1680'	1900'



OCA(H)		A	B	C	D	① TRANSITION LEVEL: - FL050 when QNH is 1013 hPa (760mm mercury column) or above; - FL060 when QNH is 977 hPa (733mm mercury column) or above, but less than 1013 hPa (760mm mercury column); - FL070 when QNH is less than 977 hPa (733mm mercury column). WARNING MAPt at D2.0 MOF. Timing not authorized for defining MAPt.					
Straight-in Approach	With SDF	800' (410')	800' (410')	800' (410')	800' (410')						
	WO SDF	1190' (800')	1190' (800')	1190' (800')	1190' (800')						
Circling		1190' (800')	1190' (800')	1190' (800')	1220' (740')						
GROUND SPEED		km/h	150	180	210	240	270	300	330	360	390
RATE OF DESCENT		m/s	2.0	2.4	2.7	3.1	3.5	3.9	4.3	4.7	5.1
		ft/min	385	463	540	617	694	771	848	925	1002