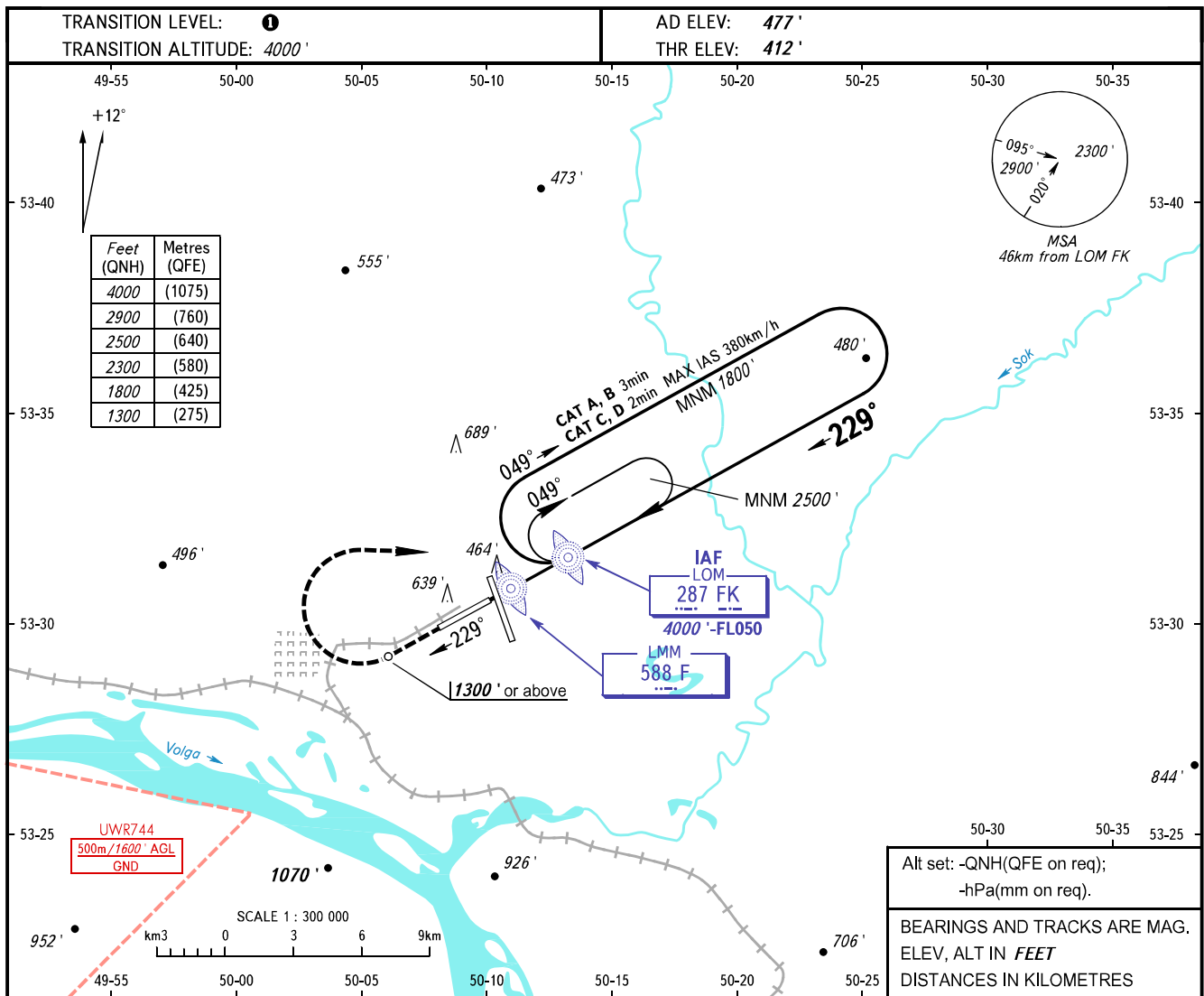


**INSTRUMENT
APPROACH
CHART - ICAO**

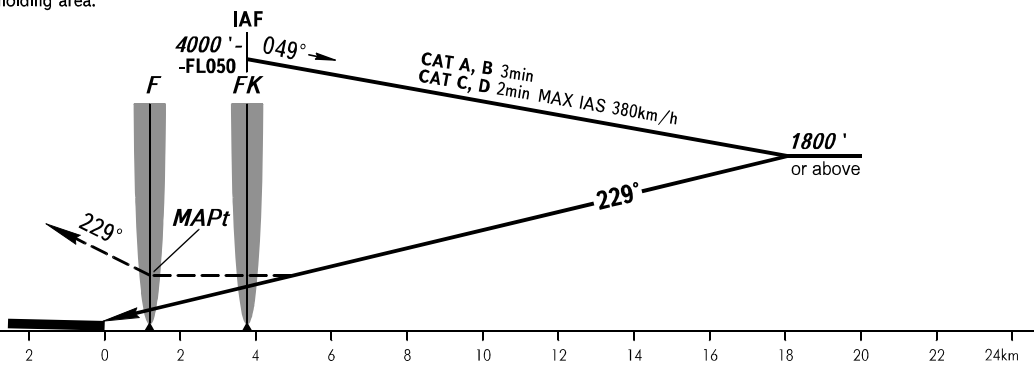
**SAMARA, RUSSIA
KURUMOCH
NDB B RWY 23**

| | |
|-------|---------|
| RADAR | 128.000 |
| TOWER | 118.200 |



MISSED APPROACH

Climb on track 229° to 1300' or above, turn RIGHT to LOM FK climbing to 2500' or by ATS unit instruction, then according to chart or to holding area.



| OCA(H) | A | B | C | D |
|-------------|-------------|-------------|--------------|--------------|
| Straight-in | | | | |
| Approach | | | | |
| Circling | 940' (460') | 980' (500') | 1090' (610') | 1220' (740') |

1 TRANSITION LEVEL:
- FL050 when QNH is 1013 hPa (760mm mercury column) or above;
- FL060 when QNH is 977 hPa (733mm mercury column) or above, but less than 1013 hPa (760mm mercury column);
- FL070 when QNH is less than 977 hPa (733mm mercury column).

WARNING:
1. Turn before MAPt is PROHIBITED.
2. MAPt at LMM. Timing not authorized for defining MAPt.