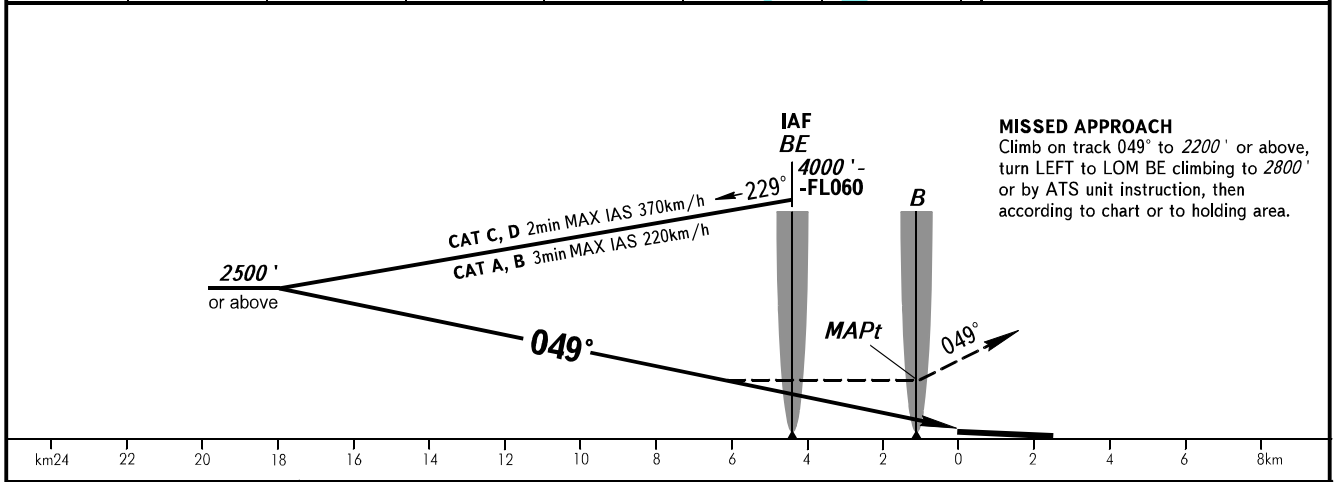
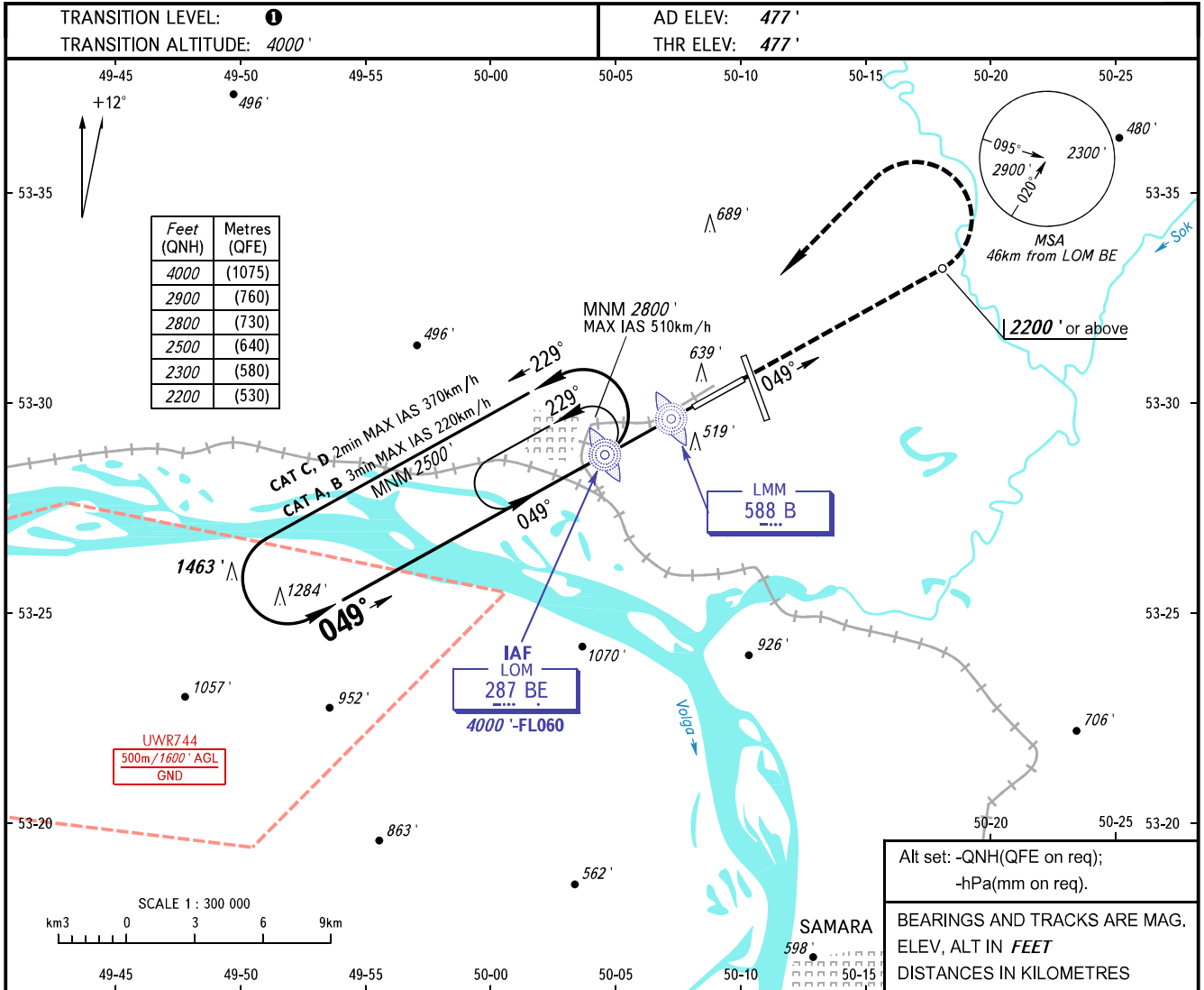


**INSTRUMENT  
APPROACH  
CHART - ICAO**

RADAR	128.000
TOWER	118.200

**SAMARA, RUSSIA  
KURUMOCH  
NDB A RWY 05**



OCA(H)		A	B	C	D
Straight-in	Approach				
Circling		1720' (1250')	1720' (1250')	1720' (1250')	1720' (1250')

**1** TRANSITION LEVEL:  
 - FL050 when QNH is 1013 hPa (760mm mercury column) or above;  
 - FL060 when QNH is 977 hPa (733mm mercury column) or above, but less than 1013 hPa (760mm mercury column);  
 - FL070 when QNH is less than 977 hPa (733mm mercury column).  
**WARNING:**  
 1. Turn before MAPt is PROHIBITED.  
 2. MAPt at LMM. Timing not authorized for defining MAPt.

CHANGE: New chart