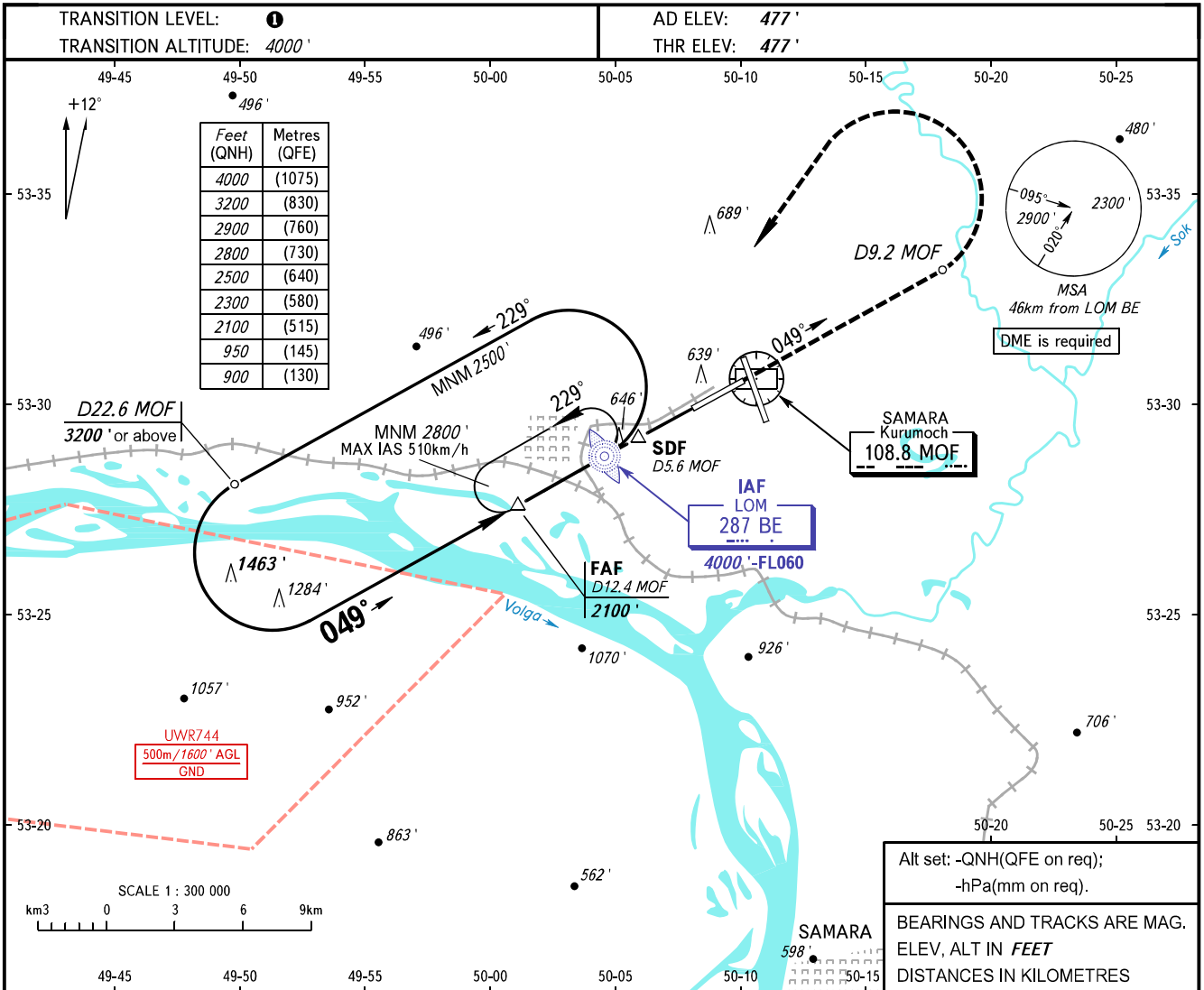


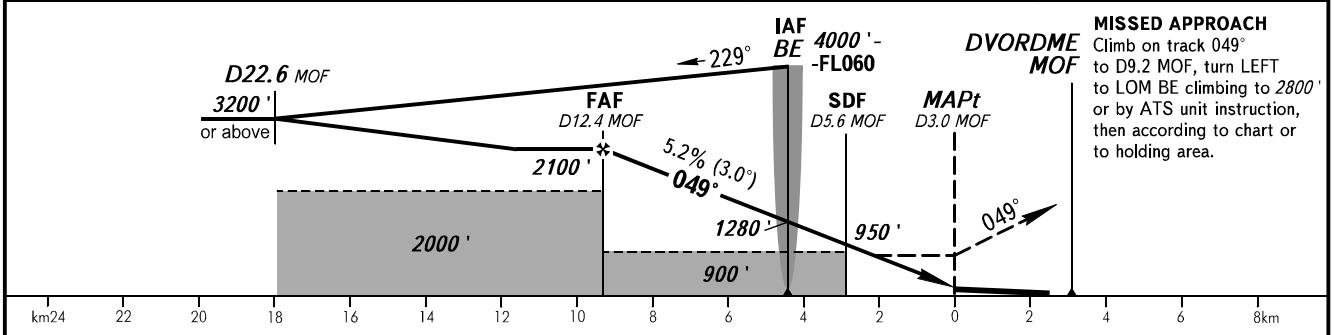
**INSTRUMENT  
APPROACH  
CHART - ICAO**

RADAR	128.000
TOWER	118.200

**SAMARA, RUSSIA  
KURUMOCH  
NDB Z RWY 05**



DME MOF	12.4	10.0	8.0	6.0
ALTITUDE	2100'	1680'	1360'	1020'



OCA(H)		A	B	C	D						
Straight-in Approach	With SDF	890' (410')	890' (410')	890' (410')	890' (410')						
	WO SDF	900' (420')	900' (420')	900' (420')	900' (420')						
Circling		940' (460')	980' (500')	1090' (610')	1220' (740')						
GROUND SPEED		km/h	150	180	210	240	270	300	330	360	390
RATE OF DESCENT		m/s	2.2	2.6	3.0	3.5	3.9	4.3	4.8	5.2	5.6
		ft/min	427	512	597	682	768	853	938	1024	1109

**1** TRANSITION LEVEL:  
 - FL050 when QNH is 1013 hPa (760mm mercury column) or above;  
 - FL060 when QNH is 977 hPa (733mm mercury column) or above, but less than 1013 hPa (760mm mercury column);  
 - FL070 when QNH is less than 977 hPa (733mm mercury column);

**WARNING**  
 MAPt at D3.0 MOF. Timing not authorized for defining MAPt.

CHANGE: NIL