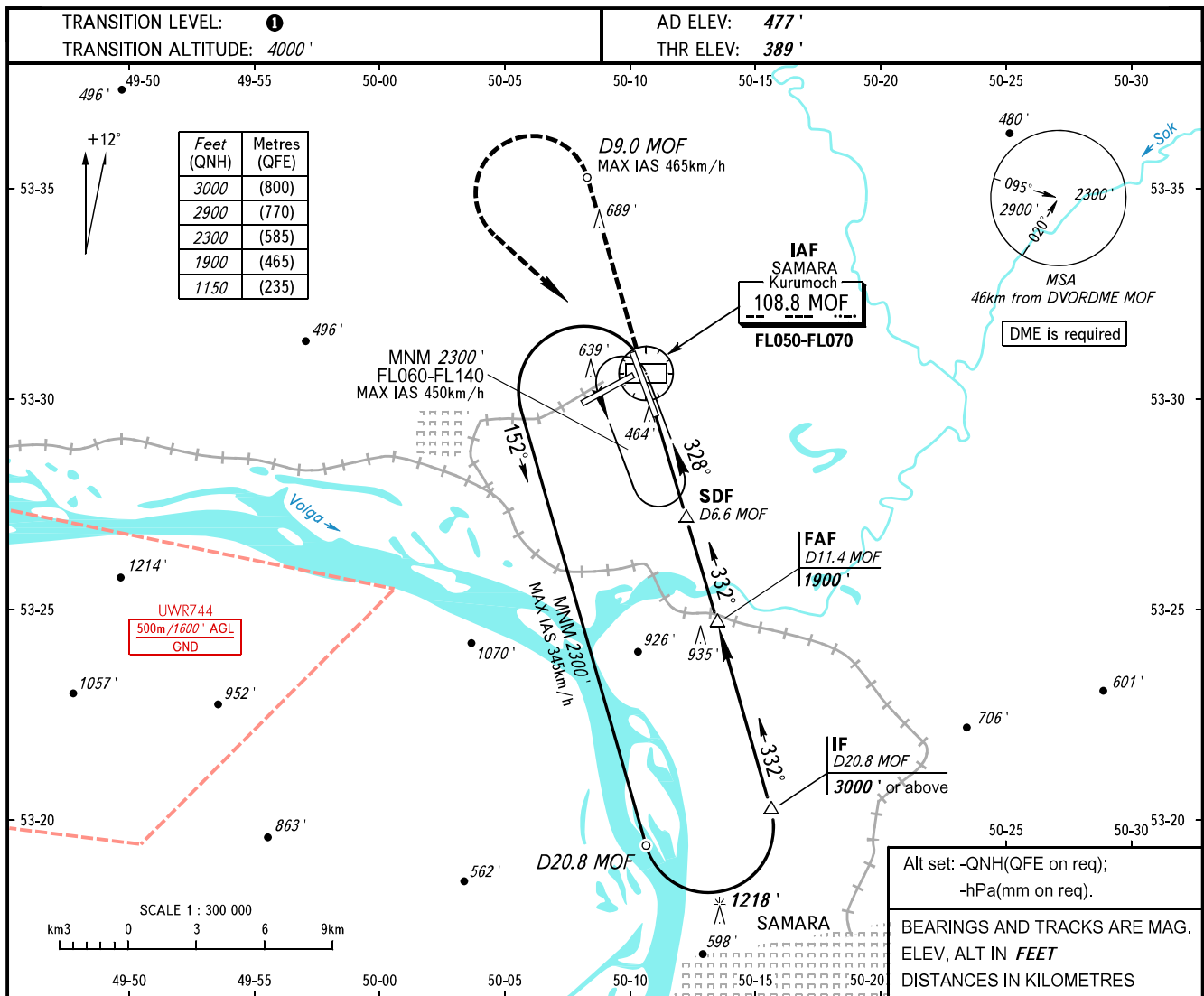


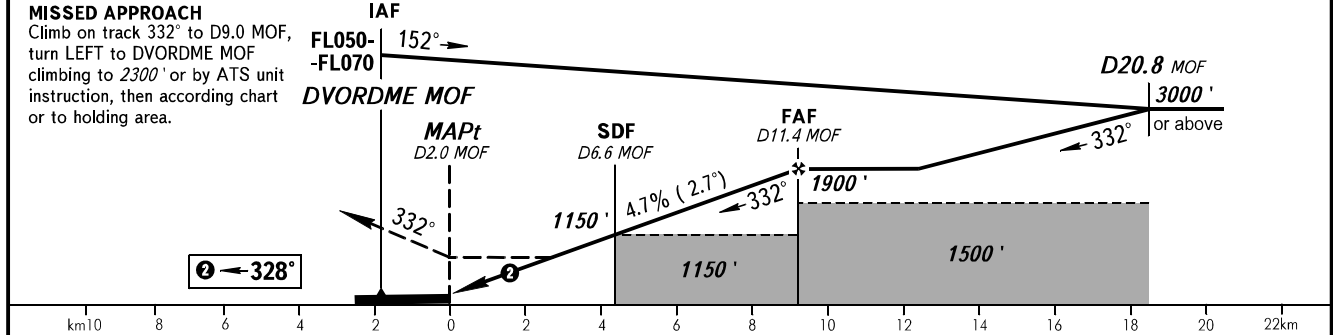
**INSTRUMENT
APPROACH
CHART - ICAO**

RADAR	128.000
TOWER	118.200

**SAMARA, RUSSIA
KURUMOCH
DVOR RWY 33**



DME MOF	4.0	6.0	8.0	10.0	11.4
ALTITUDE	760'	1070'	1370'	1680'	1900'



OCA(H)		A	B	C	D	1 TRANSITION LEVEL: - FL050 when QNH is 1013 hPa (760mm mercury column) or above; - FL060 when QNH is 977 hPa (733mm mercury column) or above, but less than 1013 hPa (760mm mercury column); - FL070 when QNH is less than 977 hPa (733mm mercury column). WARNING: 1. Final approach track is offset by 4° from the RCL. 2. MAPt at D2.0 MOF. Timing not authorized for defining MAPt.					
Straight-in	With SDF	790' (400')	790' (400')	790' (400')	790' (400')						
	WO SDF	1150' (760')	1150' (760')	1150' (760')	1150' (760')						
Approach											
Circling		940' (460')	980' (500')	1090' (610')	1220' (740')						
GROUND SPEED		km/h	150	180	210	240	270	300	330	360	390
RATE OF DESCENT		m/s	2.0	2.4	2.7	3.1	3.5	3.9	4.3	4.7	5.1
		ft/min	385	463	540	617	694	771	848	925	1002