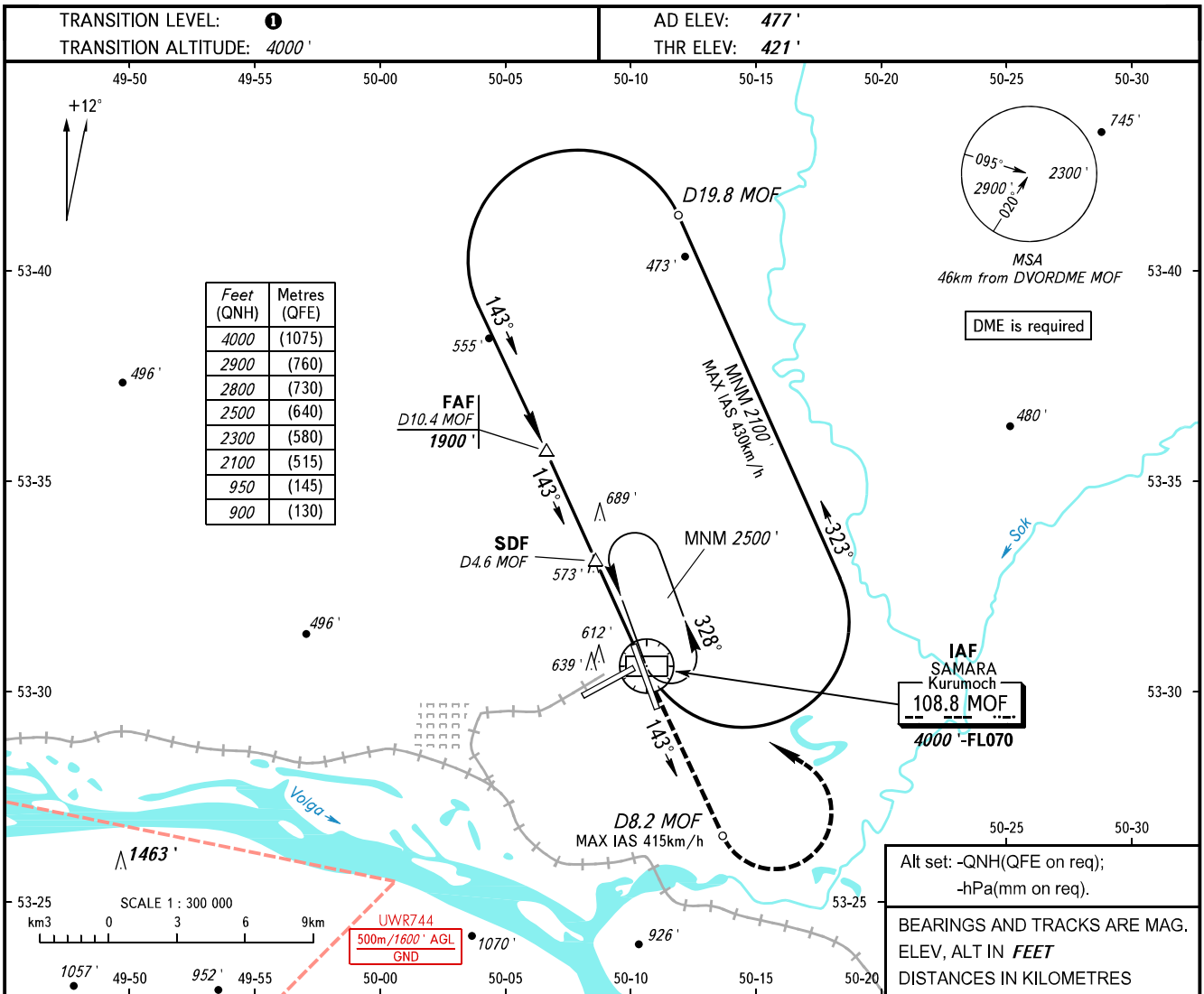


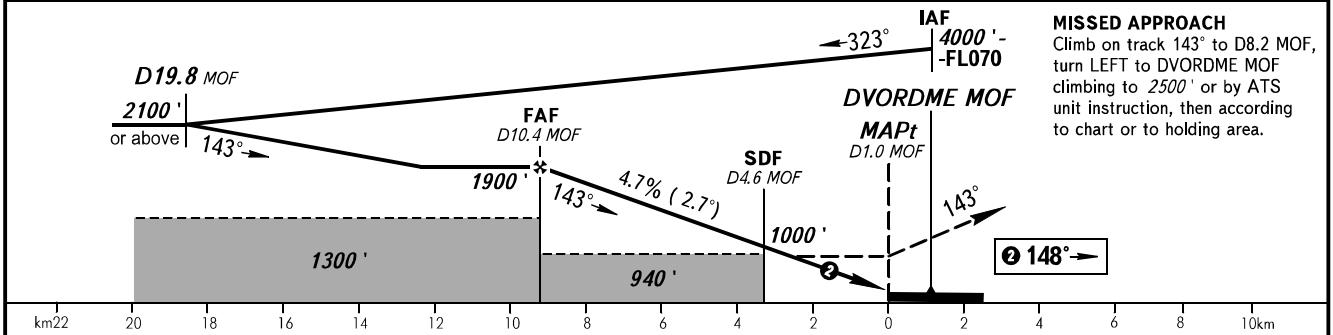
**INSTRUMENT  
APPROACH  
CHART - ICAO**

RADAR	128.000
TOWER	118.200

**SAMARA, RUSSIA  
KURUMOCH  
DVOR RWY 15**



DME MOF	10.4	8.0	6.0	4.0
ALTITUDE	1900'	1540'	1230'	920'



OCA(H)		A	B	C	D						
Straight-in	With SDF	860' (440')	860' (440')	860' (440')	860' (440')						
	WO SDF	940' (520')	940' (520')	940' (520')	940' (520')						
Approach											
Circling		940' (460')	980' (500')	1090' (610')	1220' (740')						
GROUND SPEED		km/h	150	180	210	240	270	300	330	360	390
RATE OF DESCENT		m/s	2.0	2.4	2.7	3.1	3.5	3.9	4.3	4.7	5.1
		ft/min	385	463	540	617	694	771	848	925	1002

**① TRANSITION LEVEL:**  
- FL050 when QNH is 1013 hPa (760mm mercury column) or above;  
- FL060 when QNH is 977 hPa (733mm mercury column) or above, but less than 1013 hPa (760mm mercury column);  
- FL070 when QNH is less than 977 hPa (733mm mercury column).

**WARNING:**  
1. Final approach track is offset by 5° from the RCL.  
2. MAPt at D1.0 MOF. Timing not authorized for defining MAPt.

CHANGE: New chart