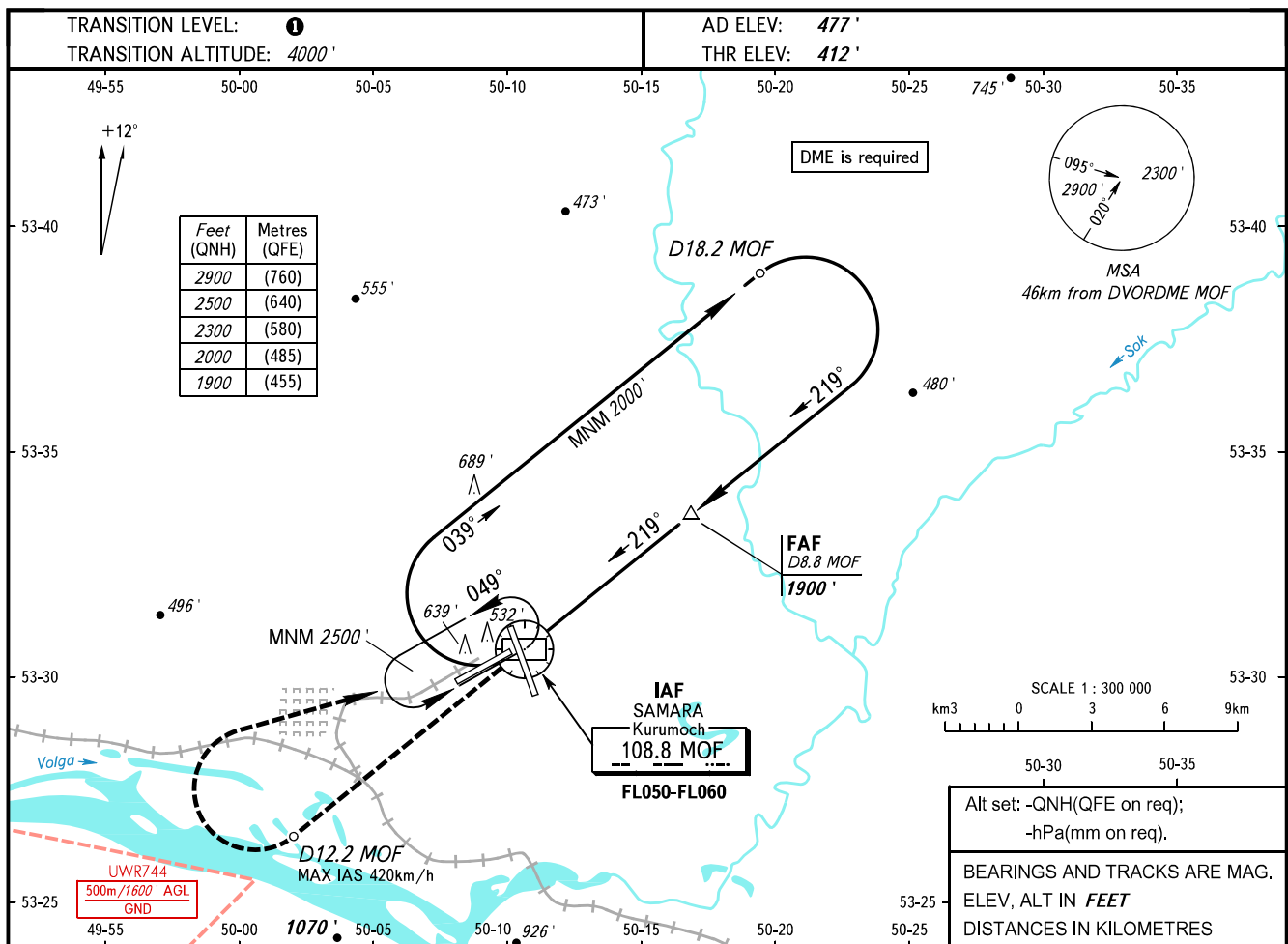


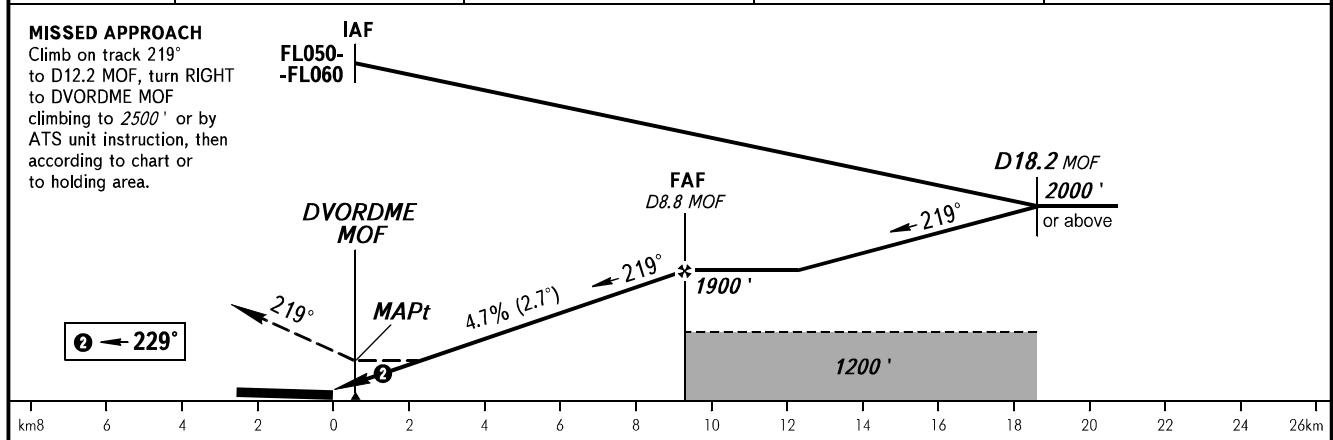
**INSTRUMENT  
APPROACH  
CHART - ICAO**

**SAMARA, RUSSIA  
KURUMOCH  
DVOR RWY 23**

RADAR	128.000
TOWER	118.200



DME MOF	2.0	4.0	6.0	8.8
ALTITUDE	850'	1160'	1470'	1900'



OCA(H)		A	B	C	D	<b>0</b> TRANSITION LEVEL: - FL050 when QNH is 1013 hPa (760mm mercury column) or above; - FL060 when QNH is 977 hPa (733mm mercury column) or above, but less than 1013 hPa (760mm mercury column); - FL070 when QNH is less than 977 hPa (733mm mercury column). <b>WARNING:</b> 1. Final approach track is offset by 10° from the RCL. 2. MAPt at DVORDME MOF. Timing not authorized for defining MAPt.					
Straight-in Approach		760' (350')	760' (350')	760' (350')	760' (350')						
Circling		940' (460')	980' (500')	1090' (610')	1220' (740')						
GROUND SPEED		km/h	150	180	210	240	270	300	330	360	390
RATE OF DESCENT		m/s	2.0	2.4	2.7	3.1	3.5	3.9	4.3	4.7	5.1
		ft/min	385	463	540	617	694	771	848	925	1002