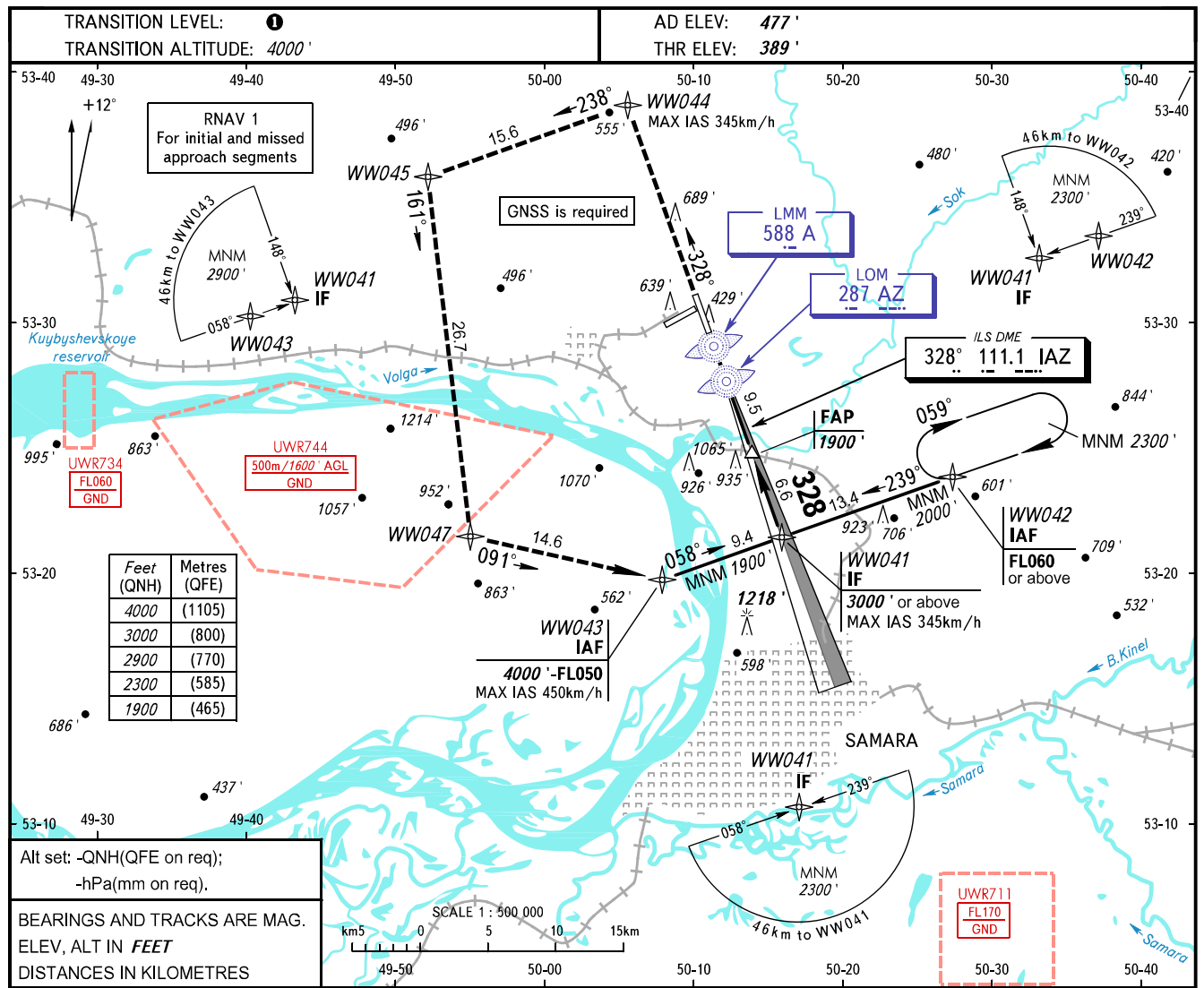


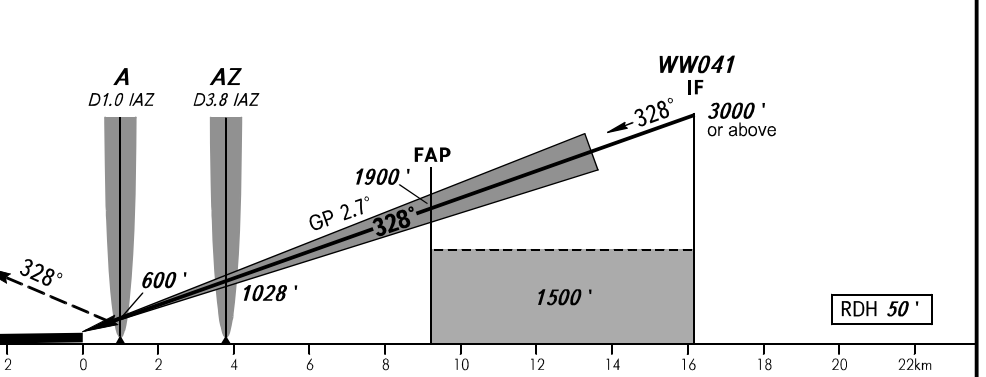
**INSTRUMENT
APPROACH
CHART - ICAO**

**SAMARA, RUSSIA
KURUMOCH
ILS Z RWY 33 CAT I**

RADAR	128.000
TOWER	118.200



MISSED APPROACH
Climb on track 328° to WW044, turn LEFT to WW045, then proceed to WW047, then proceed to WW043 climbing to 4000' or by ATS unit instruction.



OCA(H)		A	B	C	D	DL					
Straight-in	CAT I	553' (164')	565' (176')	574' (185')	585' (196')	585' (196')					
	Approach										
Circling		940' (460')	980' (500')	1090' (610')	1220' (740')	1220' (740')					
GROUND SPEED		km/h	150	180	210	240	270	300	330	360	390
RATE OF DESCENT		m/s	2.0	2.4	2.7	3.1	3.5	3.9	4.3	4.7	5.1
		ft/min	385	463	540	617	694	771	848	925	1002

TRANSITION LEVEL:
- FL050 when QNH is 1013 hPa (760mm mercury column) or above;
- FL060 when QNH is 977 hPa (733mm mercury column) or above, but less than 1013 hPa (760mm mercury column);
- FL070 when QNH is less than 977 hPa (733mm mercury column).

WARNING
Zero range of DME IAZ is indicated at RWY 33 THR.

CHANGE: Metres (QFE)