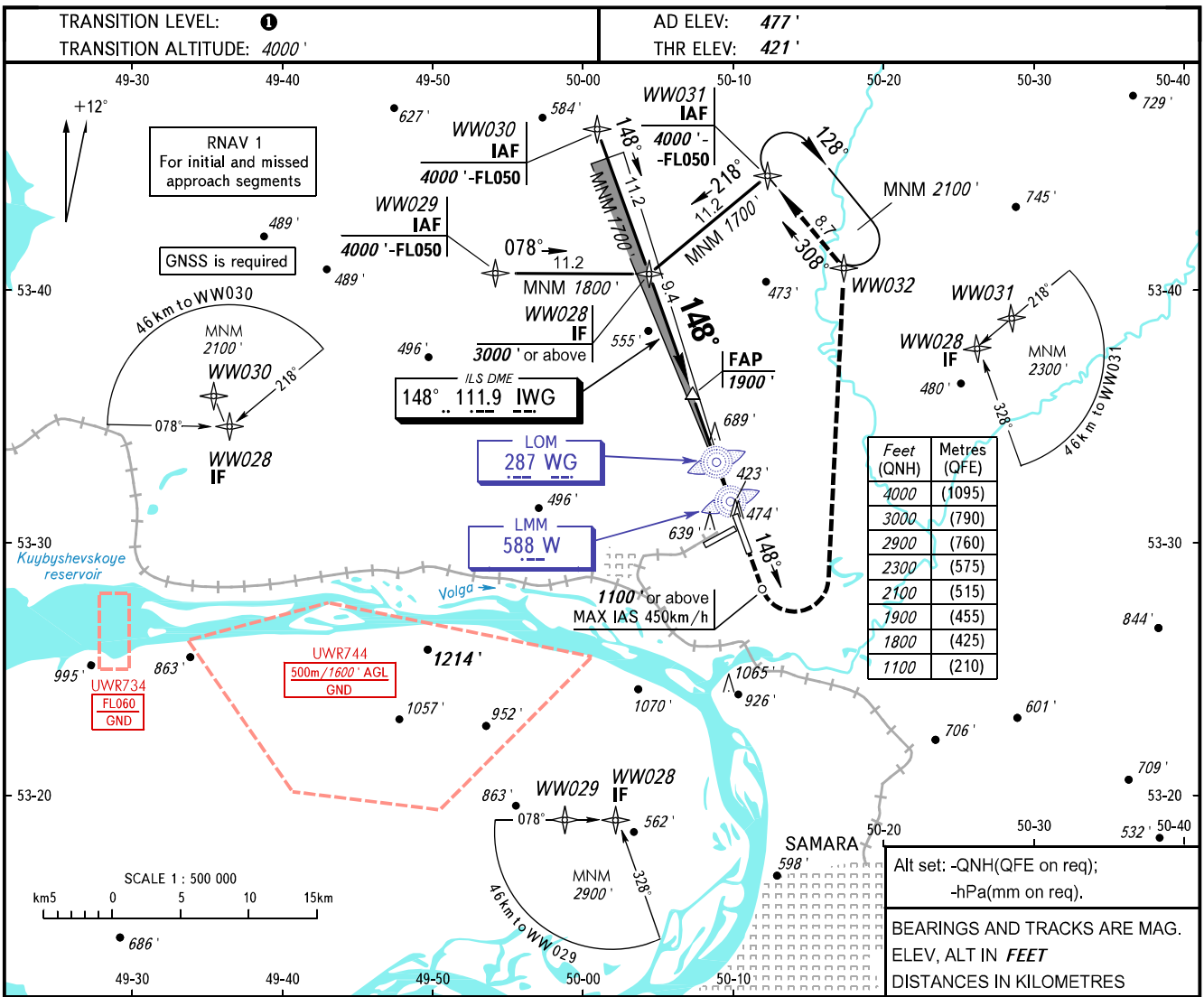


**INSTRUMENT
APPROACH
CHART - ICAO**

**SAMARA, RUSSIA
KURUMOCH
ILS Z RWY 15 CAT I/II/III**

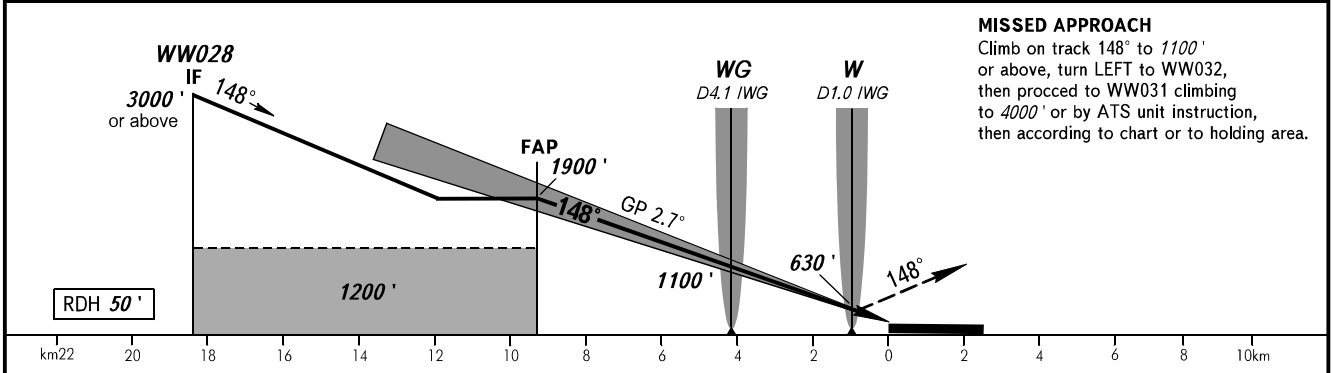
RADAR	128.000
TOWER	118.200



Feet (QNH)	Metres (QFE)
4000	(1095)
3000	(790)
2900	(760)
2300	(575)
2100	(515)
1900	(455)
1800	(425)
1100	(210)

Alt set: -QNH(QFE on req);
-hPa(mm on req).

BEARINGS AND TRACKS ARE MAG.
ELEV, ALT IN FEET
DISTANCES IN KILOMETRES



MISSED APPROACH
Climb on track 148° to 1100' or above, turn LEFT to WW032, then proceed to WW031 climbing to 4000' or by ATS unit instruction, then according to chart or to holding area.

OCA(H)		A	B	C	D	DL
Straight-in Approach	CAT I	584' (163')	596' (175')	605' (184')	616' (195')	616' (195')
	CAT II	474' (54')	486' (66')	499' (79')	515' (95')	516' (96')
	CAT IIIA	APPROVED				
Circling		940' (460')	980' (500')	1090' (610')	1220' (740')	1220' (740')

TRANSITION LEVEL:
- FL050 when QNH is 1013 hPa (760mm mercury column) or above;
- FL060 when QNH is 977 hPa (733mm mercury column) or above, but less than 1013 hPa (760mm mercury column);
- FL070 when QNH is less than 977 hPa (733mm mercury column).

WARNING
Zero range of DME IWG is indicated at RWY 15 THR.

GROUND SPEED	km/h	150	180	210	240	270	300	330	360	390
	RATE OF DESCENT	m/s	2.0	2.4	2.7	3.1	3.5	3.9	4.3	4.7
ft/min		385	463	540	617	694	771	848	925	1002